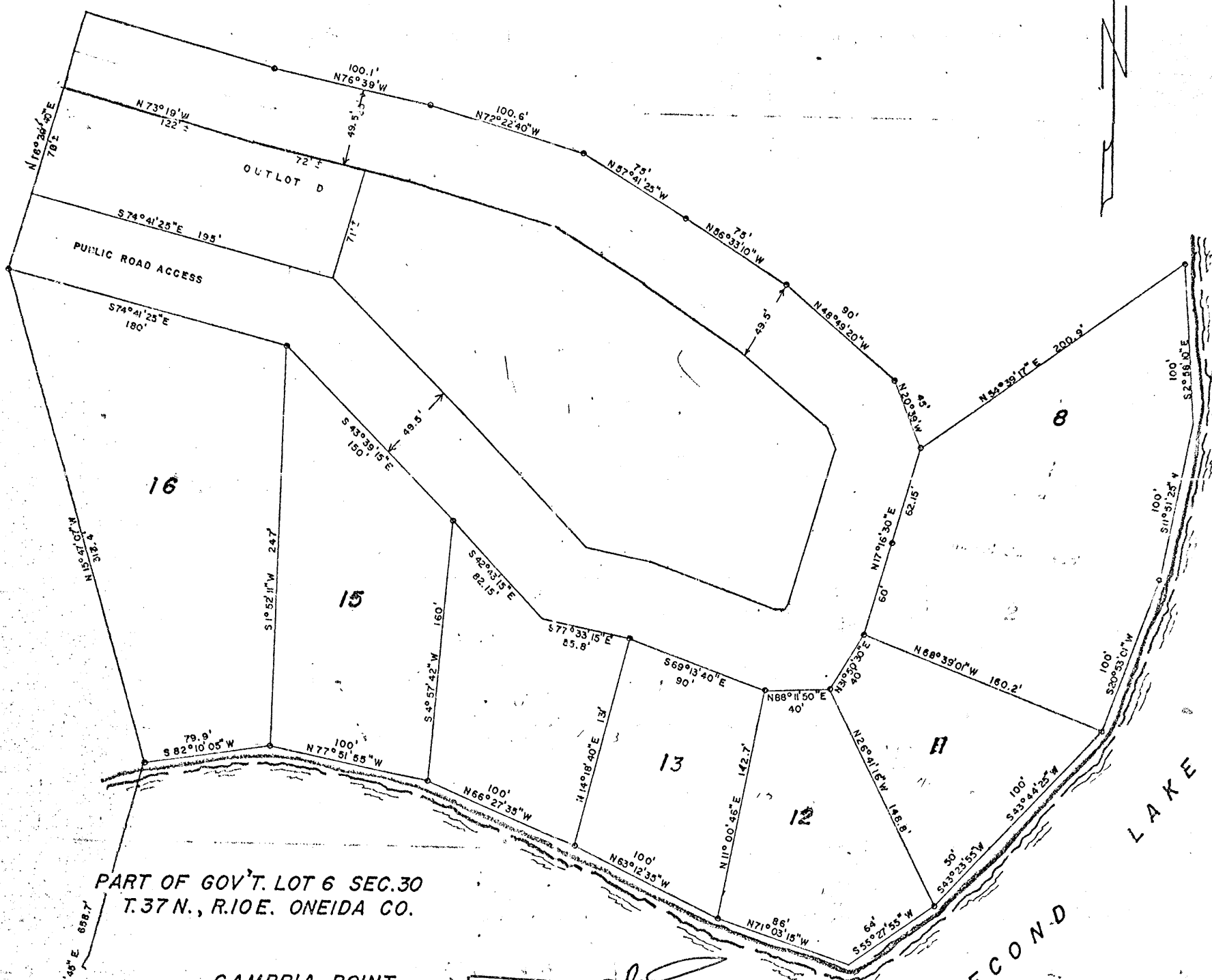


RECEIVED & FILED # **A224**  
 Oneida County Surveyor's Office  
 Date **FEB. 10 1986**  
 By **M J H**  
 OCS Area #.....



PART OF GOV'T. LOT 6 SEC.30  
 T.37 N., R.10 E. ONEIDA CO.

CAMBRIA POINT  
 SURVEY FOR R. MARTINY

SCALE 1" = 50'  
 BEARINGS MAGNETIC  
 ○ IRON PIPE  
 SURVEY BY N. LOFTUS  
 12-24-1965

RECEIVED & FILED # **166**  
 Oneida County Surveyor's Office  
 Date **2 July 77**  
 By **D. M. Wint**  
 OCS Area # **13-30-37010**

A224