

Part of  
**GOV'T LOT 1**  
**SECTION 8, T36N, R7E**  
 Oneida County, Wis.

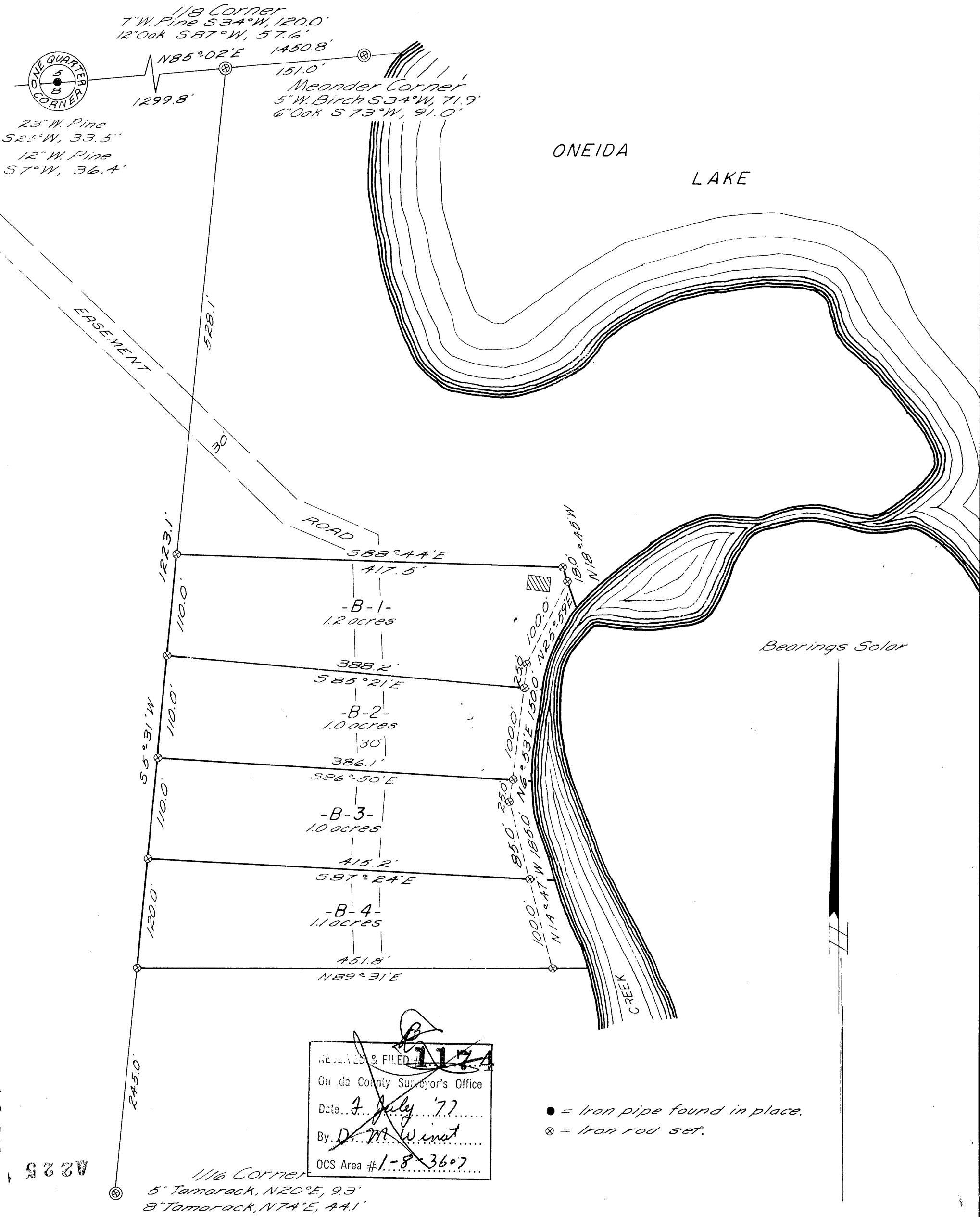
RECEIVED & FILED # **A225**  
 Oneida County Surveyor's Office  
 Date... **FEB. 10 1986**  
 By... **M.J.H.**  
 OCS Area #/f.....

Scale 1"=100'

Northwoods Surveyors Inc.

May, 1971

*John H. Fisher*  
 Land Surveyor



RECEIVED & FILED # **1174**  
 Oneida County Surveyor's Office  
 Date... **7 July '77**  
 By... **D.M. Winat**  
 OCS Area # **1-8-3607**

● = Iron pipe found in place.  
 ⊗ = Iron rod set.

A225  
 222W  
 7E-8-1