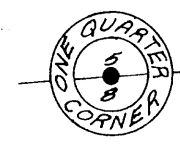


RECEIVED & FILED # **A226**
 Oneida County Surveyor's Office
 Date, **FEB. 10. 1988**
 By, **M JH**
 OCS Area #.....

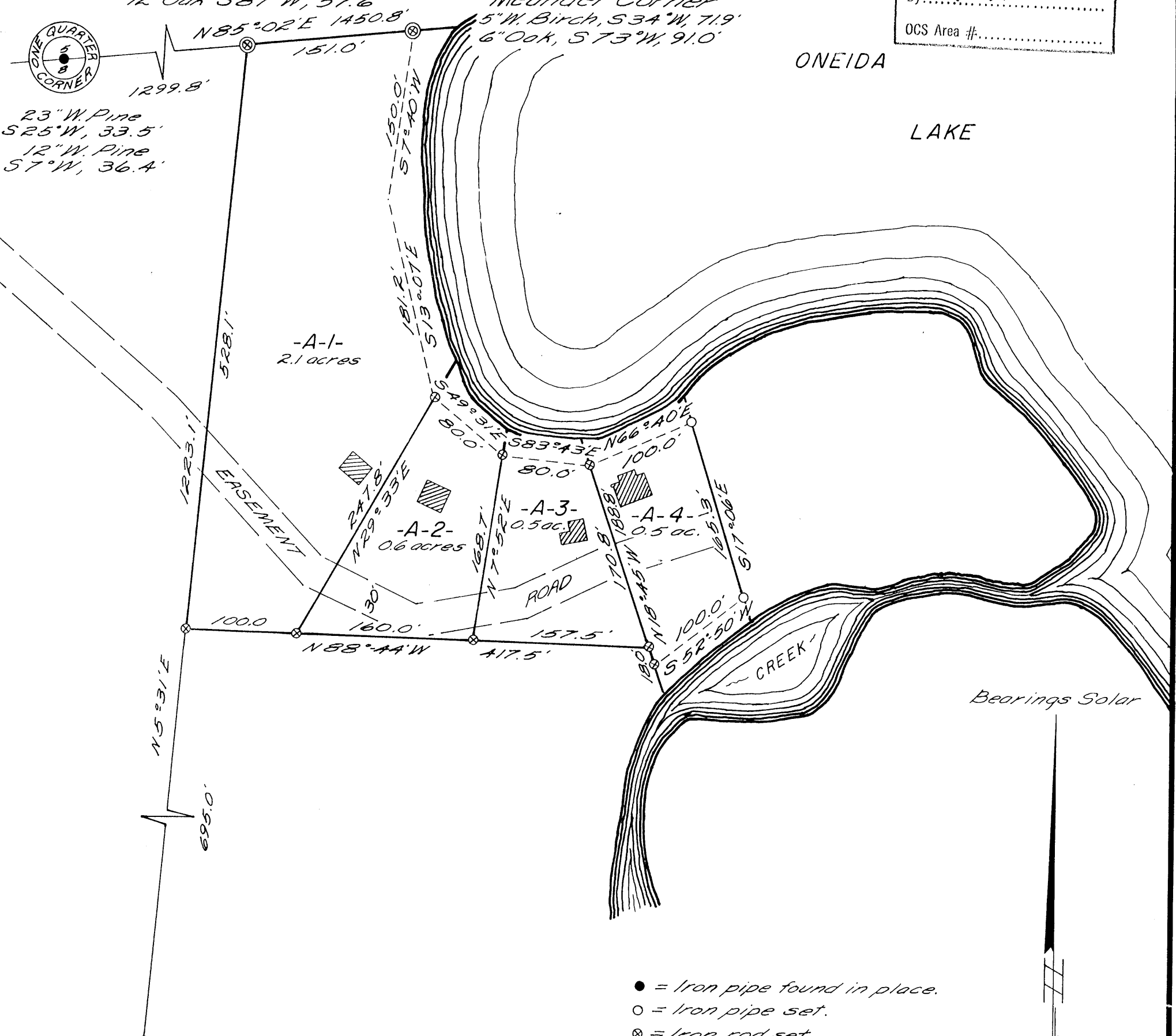


1/8 Corner
 7" W. Pine S34°W, 120.0'
 12" Oak S87°W, 57.6'

Meander Corner
 5" W. Birch, S34°W, 71.9'
 6" Oak, S73°W, 91.0'

23" W. Pine
 S25°W, 33.5'
 12" W. Pine
 S7°W, 36.4'

ONEIDA
 LAKE



11/8 Corner
 5" Tamarack N20°E, 9.3'
 8" Tamarack N74°E, 44.1'

Bearings Solar

- = Iron pipe found in place.
- = Iron pipe set.
- ⊗ = Iron rod set.

Part of
GOV'T LOT 1
SECTION 8, T36N, R7E
 Oneida County, Wis.

RECEIVED & FILED # **1175**
 Oneida County Surveyor's Office
 Date, **July '77**
 By, **D. M. Winot**
 OCS Area # **1-8-367**

A226

Scale 1"=100'

Northwoods Surveyors Inc.

April, 1971

[Signature]
 Surveyor