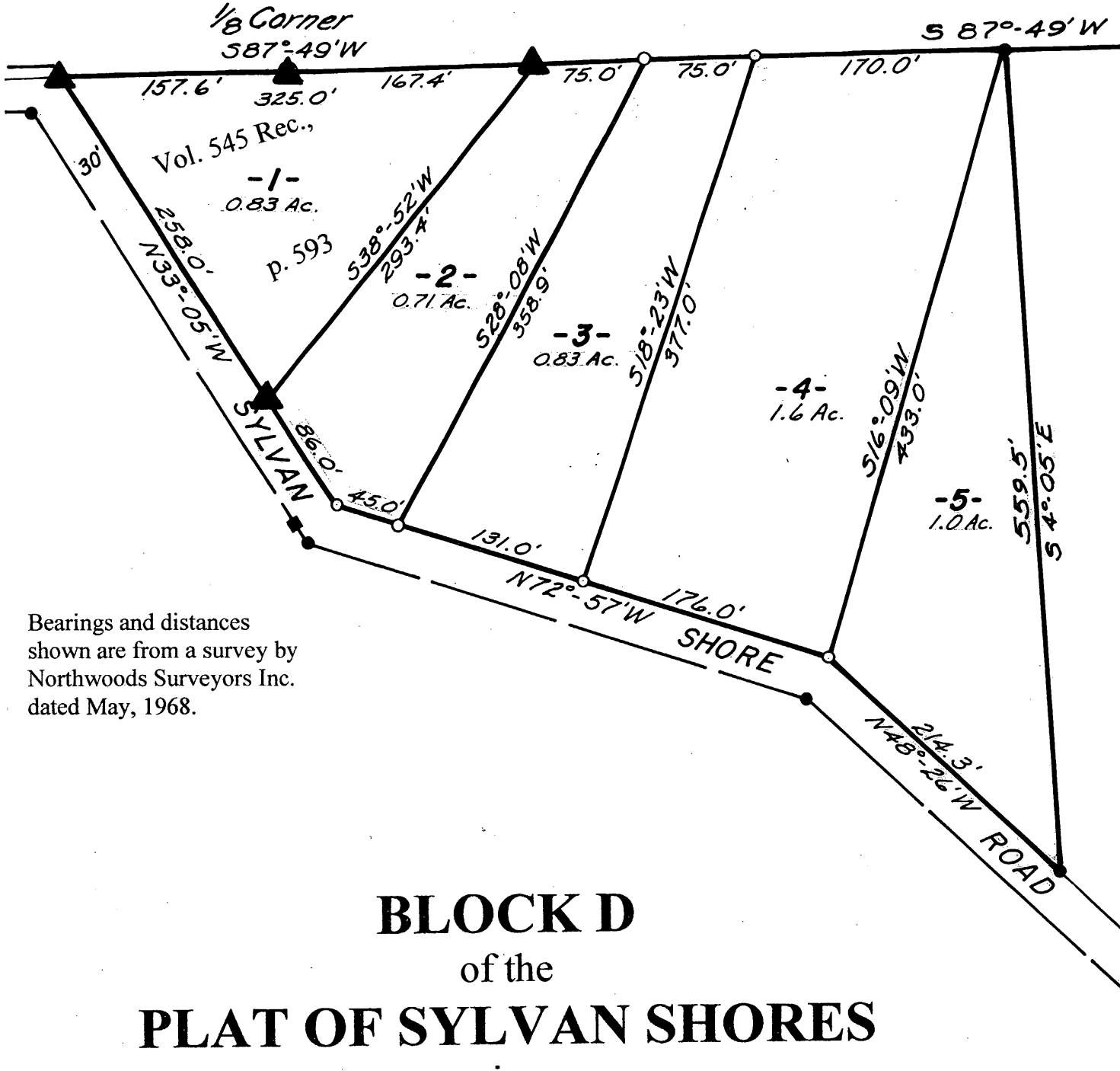
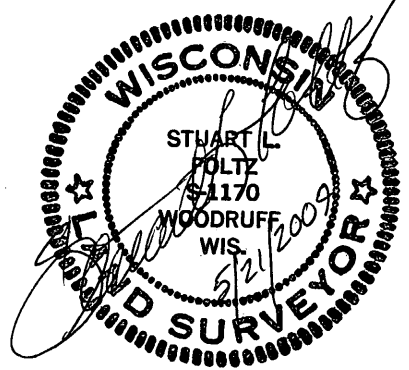


10" Oak
S62°W 47.3



Bearings and distances shown are from a survey by Northwoods Surveyors Inc. dated May, 1968.

BLOCK C - PLAT OF SYLVAN SHORES



Scale: 1" = 100'

S 4°-05'E
858.8'

BLOCK D
of the
PLAT OF SYLVAN SHORES
in
Gov't Lot 2
Section 3, T38N, R6E
Town of Hazelhurst
Oneida County, Wisconsin

May 21, 2009

Recovered, verified, and marked monuments at the corners of Lot 1, as follows:

▲ = Iron monument found in place

This survey was completed by Foltz and Associates, Inc. for the purpose of locating existing lot corners by order of Stephanie Von Holdt, agent for CRS, who has executed a written waiver for all other requirements of Wis. Adm. Code Chap. A-E 7. A closed traverse was not made and the minimum accuracy is 1 part in 100 and plus or minus 2°.

MAP # **A 2270**
DATE FILED 6/24/09
BY JH
DESCRIPTION FILED
ONEIDA CO. SURVEYOR'S OFFICE

Foltz and Associates, Inc.
Surveyors Engineers
8612 Highway 51 North, Minocqua, Wisconsin 54548
(715) 356-9485 fax (715) 356-1841