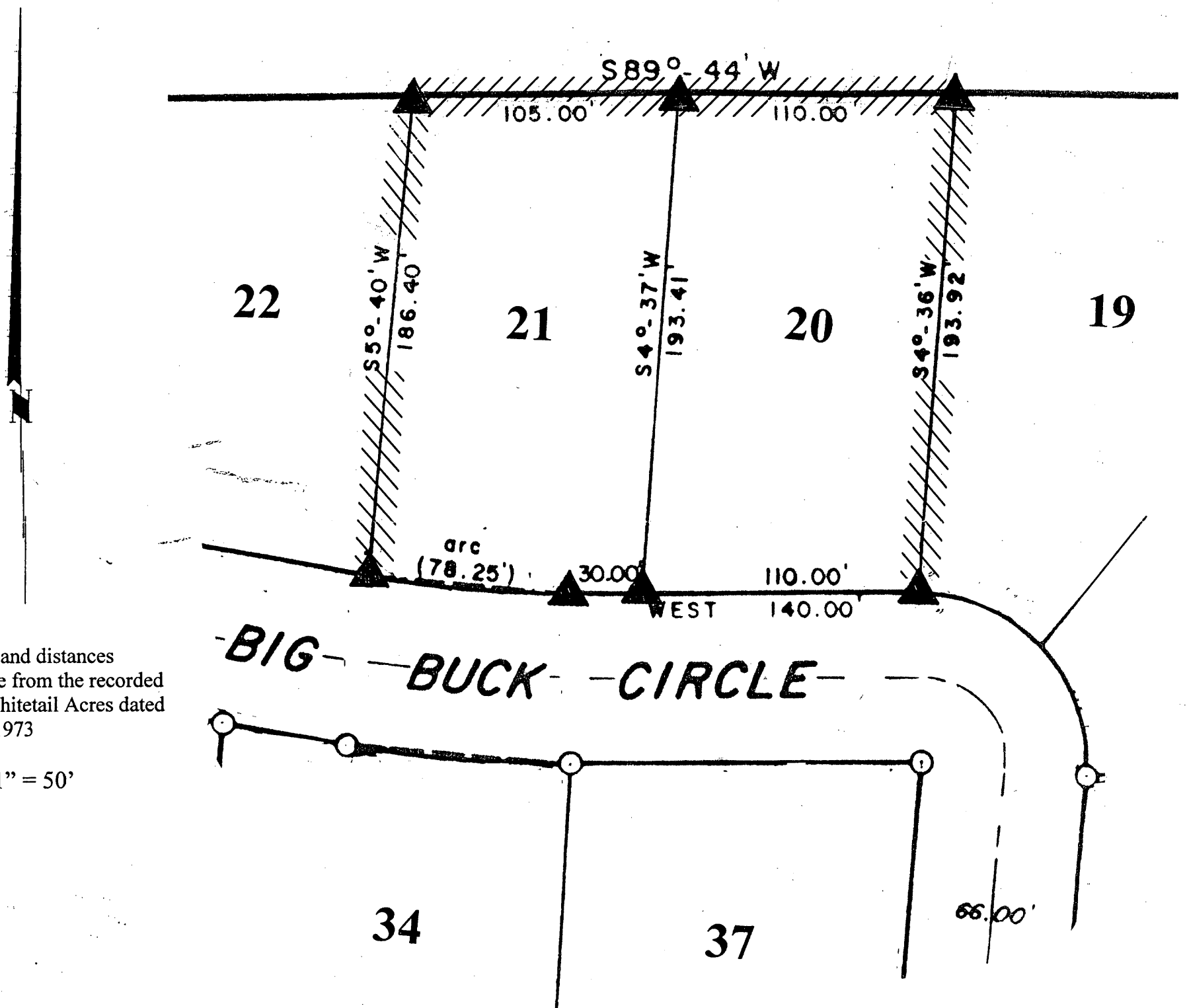


MAP # A 2271  
 DATE FILED 6/24/09  
 BY...  
 DESCRIPTION FILED  
 ONEIDA CO. SURVEYOR'S OFFICE

**Lots 20 and 21**  
 of  
**Whitetail Acres**  
 in the  
**SW<sup>1</sup>/<sub>4</sub> of the SE<sup>1</sup>/<sub>4</sub>**  
**Section 20, T39N, R7E**  
 Town of Woodruff  
 Oneida County, Wisconsin



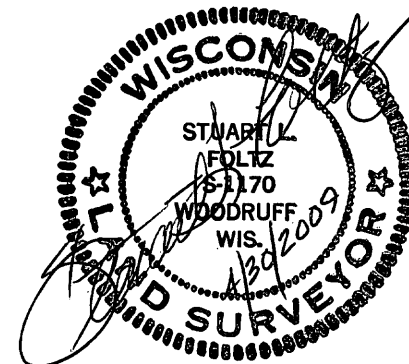
Bearings and distances shown are from the recorded plat of Whitetail Acres dated July 17, 1973

Scale: 1" = 50'

April 30, 2009

Recovered, verified, and marked monuments at the corners of Lots 20 and 21 of Whitetail Acres and marked lot lines with surveyor's flagging ribbon, as follows:

- ▲ = Iron monument found in place
- //// = Marked lot line with fluorescent surveyor's flagging ribbon



This survey was completed by Foltz and Associates, Inc. for the purpose of locating and verifying existing lot corners and marking the north and side lot lines by order of Debra Andres, who has executed a written waiver for all other requirements of Wis. Adm. Code Chap. A-E 7. A closed traverse was not made and the minimum accuracy is 1 part in 100 and plus or minus 2°.

**Foltz and Associates, Inc.**

Surveyors                      Engineers

8612 Highway 51 North,      Minocqua, Wisconsin 54548

(715) 356-9485                      fax (715) 356-1841