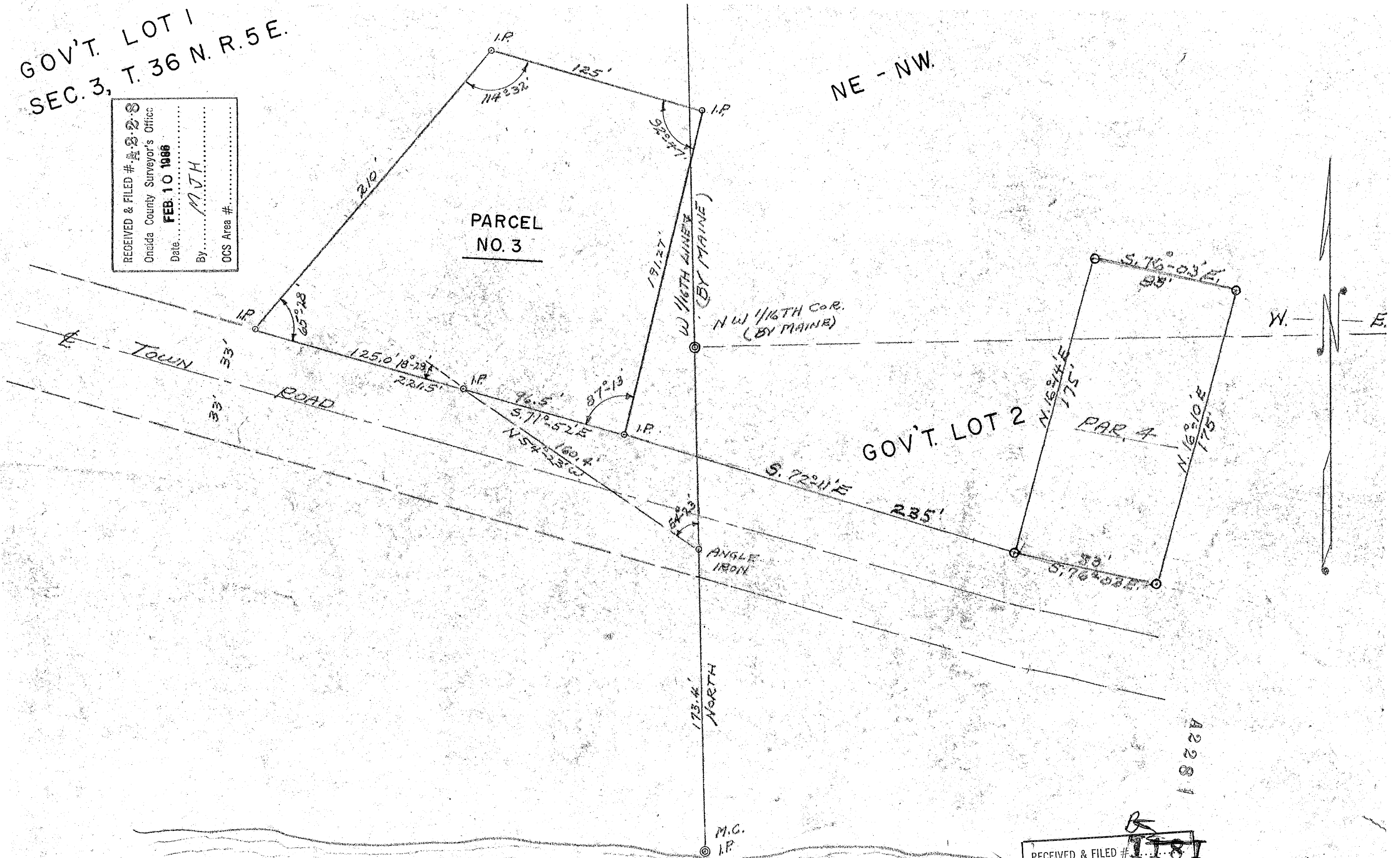


GOV'T. LOT 1
 SEC. 3, T. 36 N. R. 5 E.

RECEIVED & FILED # A 2281
 Oneida County Surveyor's Office
 Date **FEB. 10 1986**
 By M.J.H.
 OCS Area #



A 2281

RECEIVED & FILED # 1181
 Oneida County Surveyor's Office
 Date July 77
 By D. M. W. W. W.