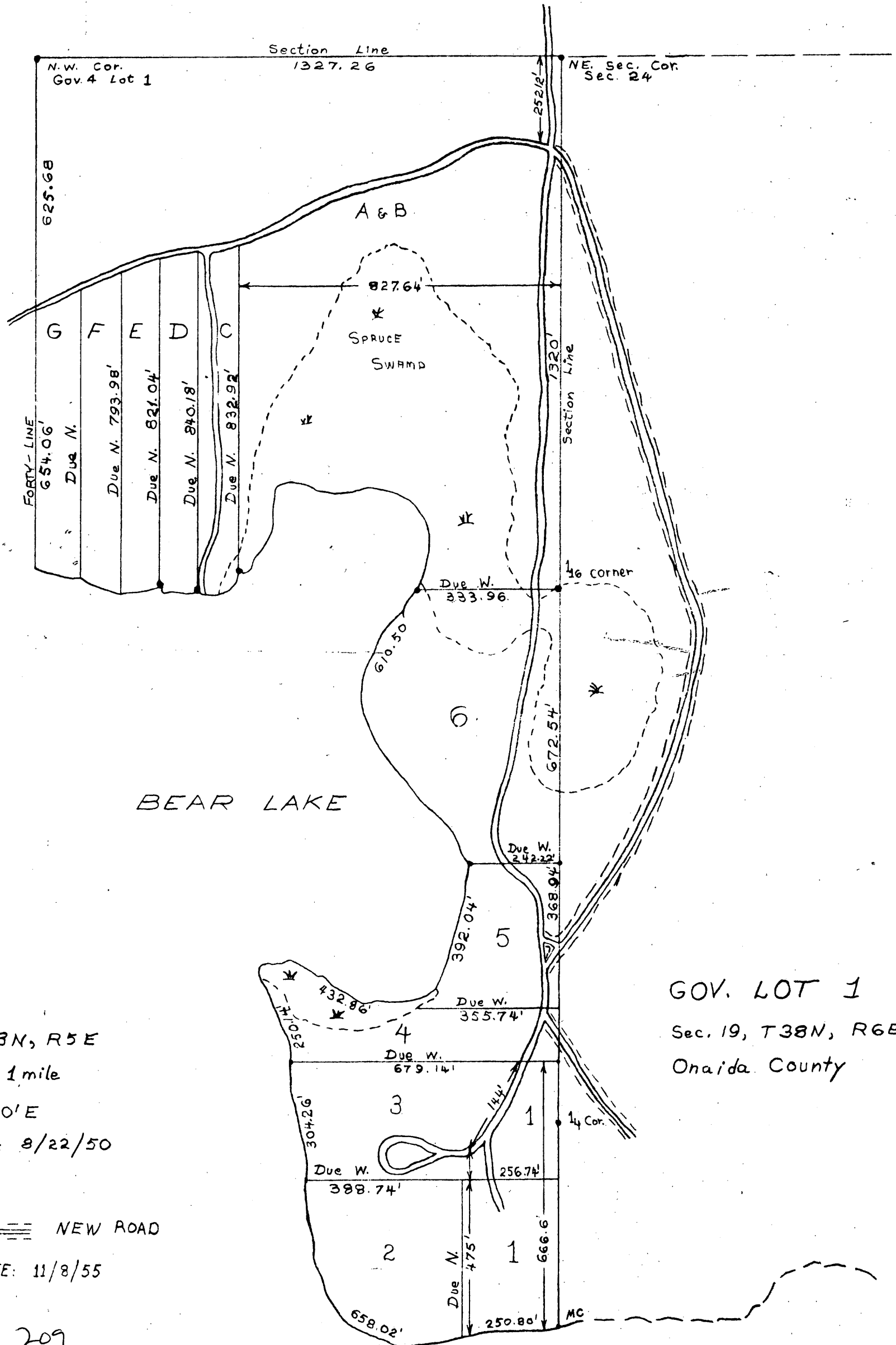


MAP # A 2297
 DATE FILED 8/20/09
 BY J.H.
 DESCRIPTION FILED
 ONEIDA CO. SURVEYOR'S OFFICE



LOT 1

SEC. 24, T38N, R5E

Scale 20" = 1 mile

Declination 2° 30' E

L.B. Burkett 8/22/50

GOV. LOT 1

Sec. 19, T38N, R6E

Oneida County

NEW ROAD

REVISED DATE: 11/8/55

Vol. 209
 Page 518
 Doc # 165153