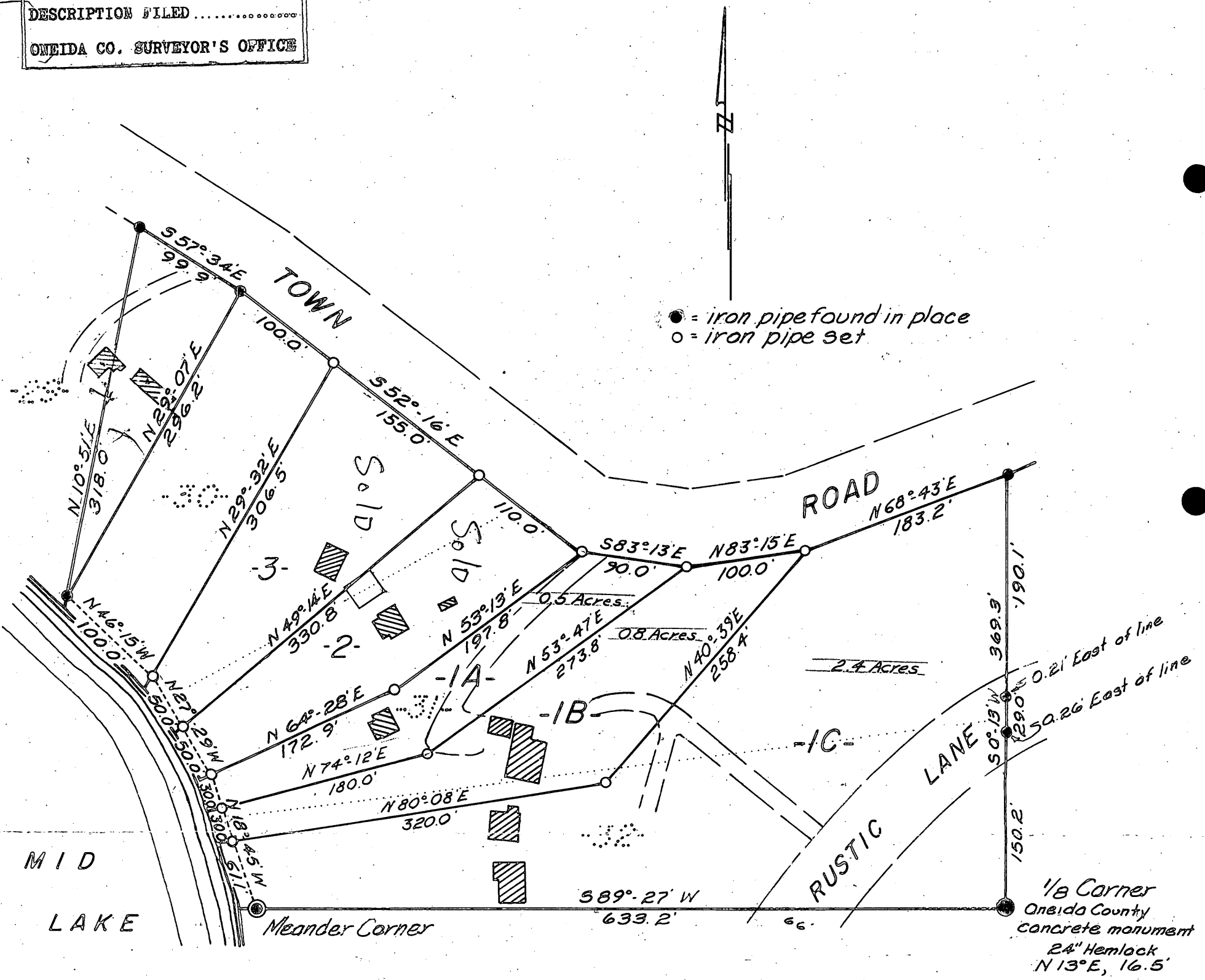


MAP # A2316
 DATE FILED 9-17-09
 BY *PLB*
 DESCRIPTION FILED
 ONEIDA CO. SURVEYOR'S OFFICE

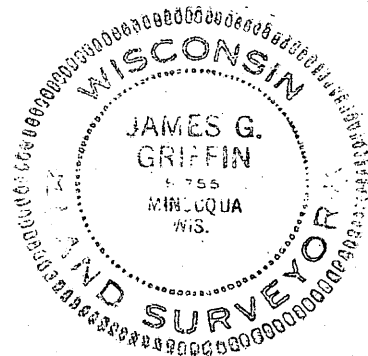
A2316



Part of
MID LAKE FOREST

GOVT. LOT 1
 SECTION 19, T 39N, R7E
 Oneida County, Wis.

Scale 1"=100'
 October, 1966
 Revised April, 1968



Northwoods Surveyors
James G. Griffin
 Land Surveyor

A2316

A2316
 J. Fisher

1-19-397