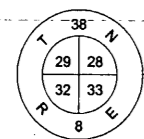
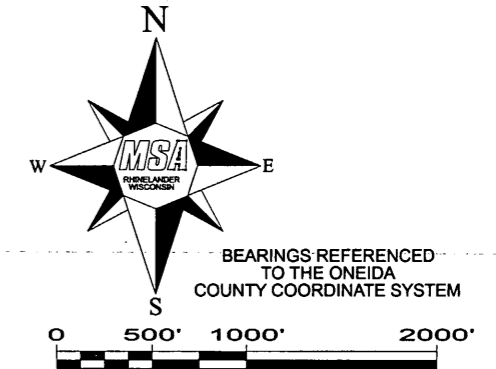
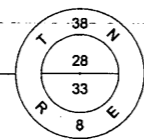


~ SECTION SUMMARY ~  
SECTIONS 33 & 34, TOWN 38 NORTH, RANGE 8 EAST  
ONEIDA COUNTY, WISCONSIN



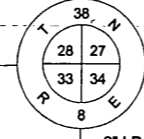
FROM COUNTY COORDINATES

S89°36'46"W (C)  
2775.93' (C)



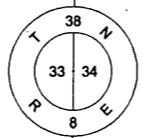
ONEIDA COUNTY ALUMINUM MONUMENT, FOUND

S88°46'10"W (C)  
2711.99' (C)



2" I.P., FOUND

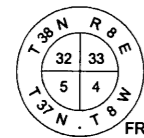
N00°42'54"E (M)  
2658.44' (M)  
2640' (W)



SEE CORNER RESTORATION FORM

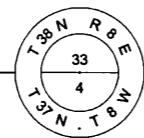
N00°39'46"E (M)  
2645.01' (M)  
2640' (W)

SEE CORNER RESTORATION FORM



FROM COUNTY COORDINATES

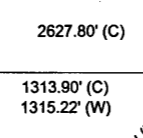
N89°50'20"E (C)  
2626.09' (C)



FROM COUNTY COORDINATES

N89°49'25"E (C)

1313.90' (C)  
1315.22' (W)  
1313.22' (R)



ONEIDA COUNTY ALUMINUM MONUMENT, FOUND

DOUGLAS LAKE

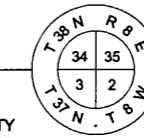
2627.80' (C)

1313.90' (C)  
1315.22' (W)

S40°32'55"W (M)  
1422.34' (M)  
1418.56' (W)

N89°48'00"E (C)  
5283.46' (C)  
5280' (W)

FROM COUNTY COORDINATES



SECTION 33

SECTION 34

LEGEND

- (M) MEASURED BY MSA (2007)
- (C) MEASUREMENTS COMPUTED FROM COUNTY COORDINATES
- (W) MEASUREMENTS FROM F.R. WINCENSTSEN - 1963
- (R) MEASUREMENTS FROM MICHAEL J. ROMPORTL - 1983

MAP # A 2317  
 DATE FILED 9-17-09  
 BY *PLA*  
 DESCRIPTION FILED  
 ONEIDA CO. SURVEYOR'S OFFICE



I, EUGENE C. UTTECH, REGISTERED LAND SURVEYOR OF THE STATE OF WISCONSIN, DO HEREBY CERTIFY THIS IS TRUE AND CORRECT TO THE BEST OF MY KNOWLEDGE AND BELIEF.

SECTION SUMMARY		
PROJECT NO. 880798	FB: 121	PLOT DATE: 7/28/2009
SHEET NO. 1 OF 1	DRAWN BY: JEA	PLOT TIME: 1:24:42 PM
SCALE: AS SHOWN	CHECKED BY: EU	FILE NAME: ...90e98980798caddSectSum.dgn

**MSA**  
PROFESSIONAL SERVICES

TRANSPORTATION • MUNICIPAL DEVELOPMENT • ENVIRONMENTAL  
 1835 N. Stevens St. Rhinelander, WI 54501  
 715-362-3244 1-800-844-7854 Fax: 715-362-4116  
 Web Address: www.msa-ps.com  
 © MSA PROFESSIONAL SERVICES