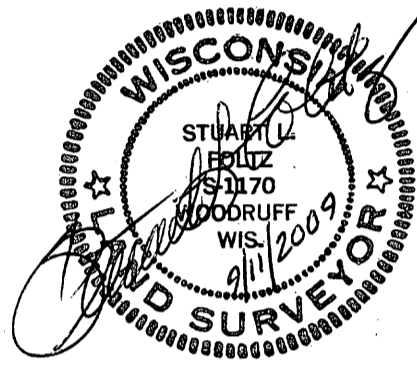


Shishebogama
Lake

The East Line
of
Volume 290 Deeds, page 308
Being part of
GOV'T. LOT 3
SECTION 11, T39N, R5E
Town of Minocqua
Oneida County, Wisconsin

Vol. 290 D,

P. 308



2-1/2" iron pipe &
wood post found

(300')
299.89'

809.33'

5" sq. conc.
monument found

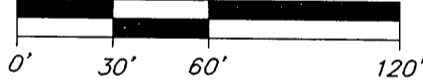
(S2°36'E, 809')

(509')
509.44'

S2°36'00"E

Bearings
per record

Scale: 1" = 60'



() = previously recorded

MAP # A2320
DATE FILED 9-17-09
BY P.L.F.
DESCRIPTION FILED
ONEIDA CO. SURVEYOR'S OFFICE

I hereby certify that this survey and the above map with the information contained thereon is, to the best of my knowledge, information and belief, a true and accurate representation thereof.
Any legal descriptions conforming to this survey have been provided on separate sheets.
The above survey was made by order of Andrew Hesselbach who has executed a written waiver for all requirements of Wis. Adm. Code Ch. A-E 7 not met.

Foltz and Associates, Inc.

Surveyors Engineers
8612 Highway 51 North, Minocqua, Wisconsin 54548
(715) 356-9485 fax (715) 356-1841

C. Winkler