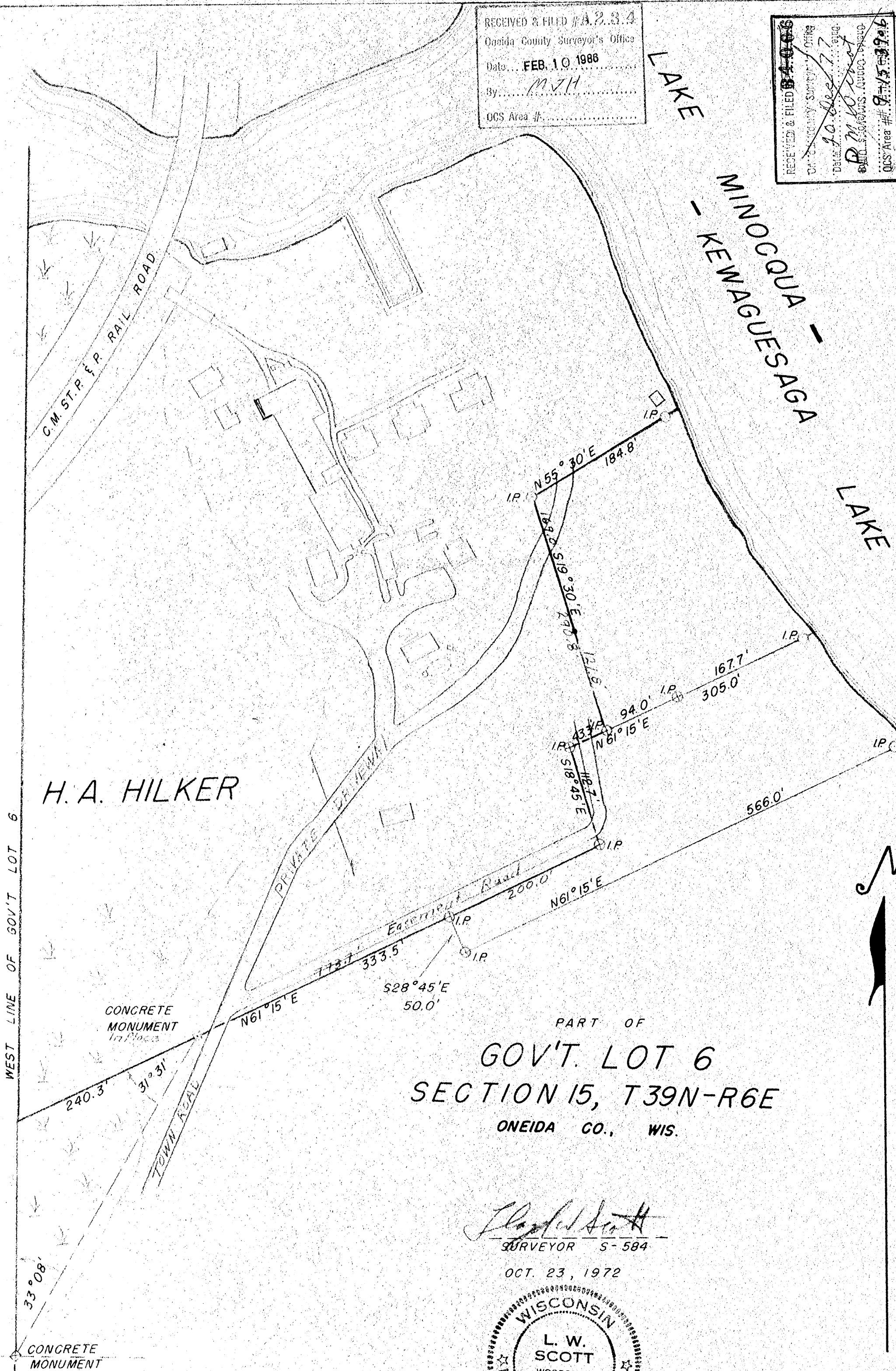


RECEIVED & FILED #A. 2. 23. 4
 Oneida County Surveyor's Office
 Date... FEB. 10 1988
 By... MJH
 OCS Area #.....

RECEIVED & FILED #A. 2. 23. 4
 Oneida County Surveyor's Office
 Date... 10 Dec 77
 By... P. M. Woodruff
 OCS Area #... 9-15-6-19-6

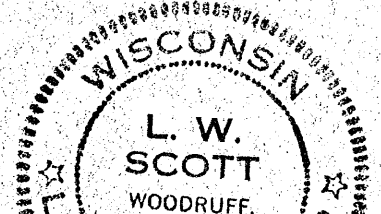


H.A. HILKER

PART OF
 GOV'T. LOT 6
 SECTION 15, T39N-R6E
 ONEIDA CO., WIS.

L. W. Scott
 SURVEYOR S-584

OCT. 23, 1972



WEST LINE OF GOV'T LOT 6

CONCRETE MONUMENT