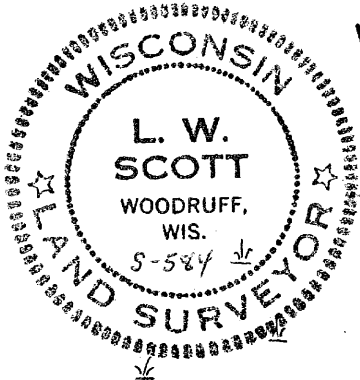


RECEIVED & FILED # ~~4008~~
 Oneida County Surveyor's Office
 Date: ~~30 Dec 72~~
 By: ~~D.M. Woodruff~~
 OCS Area # ~~19415-4-386~~

A23614

PART OF
GOV'T LOT 6
 SEC. 4, T38N-R6E
 ONEIDA CO., WIS.

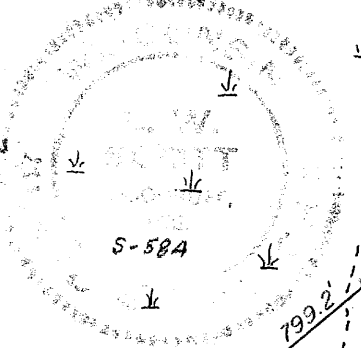


L. W. Scott
 SURVEYOR S-584

1" = 100'
 O = Iron Pipe
 ● = Post
 FOUND IN PLACE

May 31, 1973
 Revised Aug. 1, 1973

Note: This Map of Survey
 Was made to correct
 The Shore Line Measurements
 along the West Shore of
 Kaubashine Lake.



GOV'T

LOT

6

SNICK'S

Vol-296
 Page-623

SNICK'S

TOWN

ROAD

SECTION LINE

601.0'

Meander
 Corner
 Iron Pipe
 & Post

S.W. CORNER
 SEC. 4-38-6

PLACE OF BEGINNING N87°46'E
 Iron Pipe & Post

SECTION LINE

525.0'

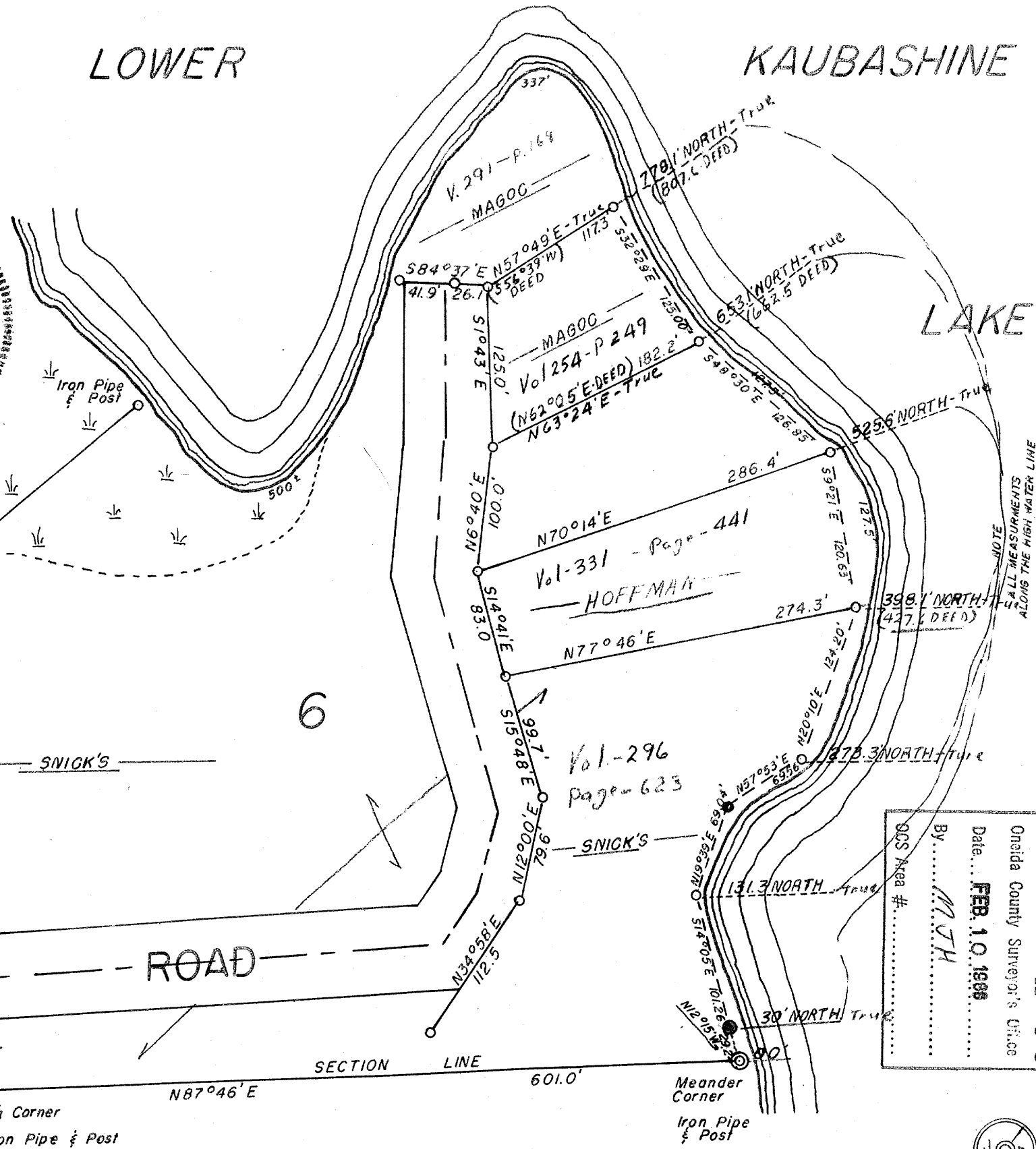
1/4 Corner

Iron Pipe & Post

LOWER

KAUBASHINE

LAKE



RECEIVED & FILED # **A23614**
 Oneida County Surveyor's Office
 Date: **FEB. 10, 1988**
 By: **MTH**
 OCS Area #

