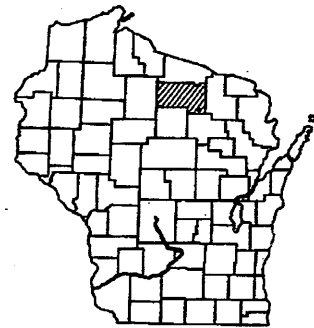


DIST

INDEX OF SHEETS

Sheet No. 1	Title
Sheet No. 2 - 2.3	Typical Sections and Details
Sheet No. 3 - 3.1	Estimate of Quantities
Sheet No. 3A	Miscellaneous Quantities
Sheet No. 4 - 4.3	Right of Way Plat
Sheet No. 5 - 5.2	Plan and Profile
Sheet No. 6 - 6.6	Standard Detail Drawings
Sheet No. -	Sign Plates
Sheet No. -	Structure Plans
Sheet No. -	Computer Earthwork Data
Sheet No. 9 - 9.1	Cross Sections

TOTAL SHEETS = 30



SUB-CONTRACTORS

- PITLIK & WICK
- DUFFER SAND & GRAVEL
- MIR'S TREE SERVICE
- H.V. JOHNSON
- TED FRANK
- TRAFFIC SIGNING & MARKING
- HWY. SAFETY
- TREWEILER CONST. Co.

STATE OF WISCONSIN  
DEPARTMENT OF TRANSPORTATION

PLAN OF PROPOSED IMPROVEMENT

U.S.H. "45" - C.T.H. "B"  
C.T.H. "G"  
ONEIDA COUNTY

STATE PROJECT	FEDERAL PROJECT	
	PROJECT	CONTRACT
9453-02-70	MA-D (273(1))	1

CONTRACTOR: KOSHAK CONST. Co., INC.  
PROJ. ENG.: JAMIE RICE  
DATE PROJ. STARTED: MAY 28, 1993  
DATE PROJ. COMPLETED: OCT. 4, 1993  
DIARY 93-19  
PROJ. PERSONNEL IN PROJ. DIARY

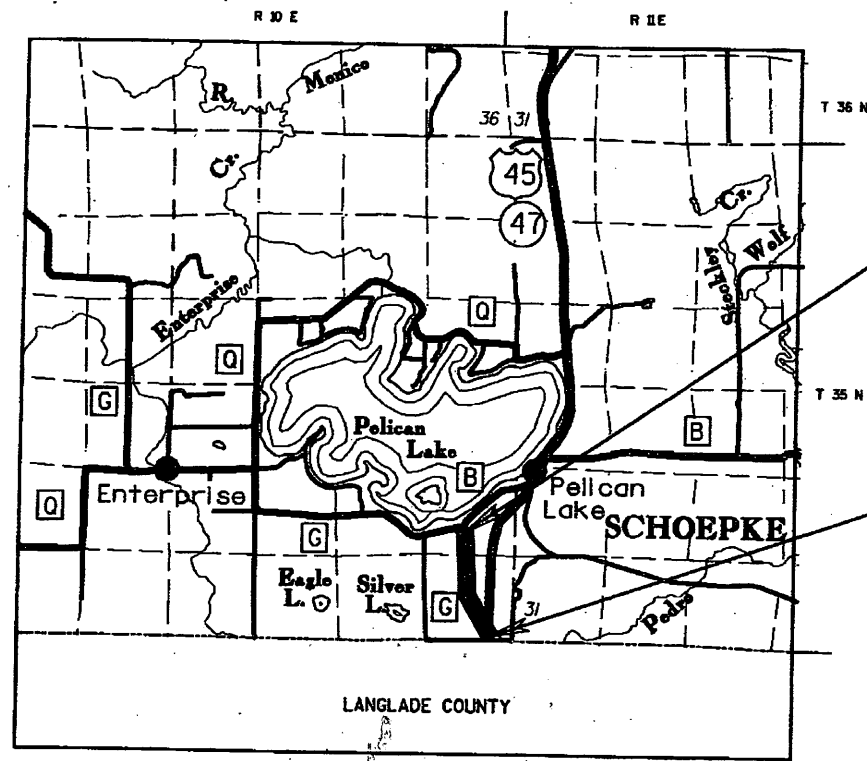
STATE PROJECT NUMBER  
9453-02-70

DESIGN DESIGNATION

A.D.T. 1992	=	655
A.D.T. 2012	=	1183
D.H.V. 2012	=	10
D.	=	55%
T. (X A.D.T.)	=	10
V.	=	55 M.P.H.
ESALS	=	80,300

CONVENTIONAL SIGNS

COUNTY LINE	---	COMBUSTIBLE FLUIDS (UNDER PRESSURE)	—G—
CORPORATE LIMITS	////	UNDERGROUND UTILITIES GAS	—E—
PROPERTY LINE	---	ELECTRIC	—T—
LOT LINE	---	TELEPHONE	TP □
LIMITED HIGHWAY EASEMENT	---	SERVICE PEDESTAL	P □
EXISTING RIGHT OF WAY	---	CABLE MARKER	□
NEW RIGHT OF WAY	---	POWER POLE	□
REFERENCE LINE	---	TELEPHONE POLE	□
SLOPE INTERCEPT	---	RAILROADS	—R—
ORIGINAL GROUND	---	MARSH	—M—
MARSH OR ROCK PROFILE	---	WOODED AREA	—W—
CULVERT IN PLACE	---		
CULVERT REQUIRED	---		
CULVERT REQUIRED (Profile)	---		



END PROJECT  
STA. 74+00.00

BEGIN PROJECT  
STA. 10+47.00  
Y = 597,740 (± 100')  
X = 2,210,380 (± 100')

LAYOUT  
SCALE 0 1 MI.  
TOTAL NET LENGTH OF CENTERLINE = 1203 ML (RURAL)

APPROVED FOR ONEIDA COUNTY  
11/16/91 Robert H. Mass  
DATE COUNTY HIGHWAY COMMISSIONER



PLAN PREPARED BY  
AYRES ASSOCIATES  
CONSULTING ENGINEERS  
GREEN BAY, WISCONSIN

STATE OF WISCONSIN  
DEPARTMENT OF TRANSPORTATION  
Surveyor AYRES ASSOC. District Reviewer D.T.K.  
Designer AYRES ASSOC. C.O. Checker J.E.G.  
District Supervisor R.J.S. C.O. Coordinator R. J. S.  
APPROVED:  
DATE: 12/2/92 [Signature] DISTRICT DIRECTOR  
APPROVED:  
DATE: 12/28/92 [Signature] REGIONAL CHIEF ROAD DESIGN ENGINEER

U.S. DEPARTMENT OF TRANSPORTATION  
FEDERAL HIGHWAY ADMINISTRATION  
REGION 5 WISCONSIN DIVISION  
APPROVED:  
DATE: DIVISION ADMINISTRATOR

ALL COORDINATES SHOWN ON THIS PLAN ARE SCALED FROM U.S.G.S. TOPOGRAPHIC MAP, ELCHO, WI., 7.5 MINUTE QUADRANGLE, CENTRAL ZONE, FOR IDENTIFICATION ONLY.

MAP # A 2388A  
DATE FILED 9/9/10  
BY [Signature]  
DESCRIPTION FILED  
ONEIDA CO. SURVEYOR'S OFFICE

NO. 51  
A 2388B  
COUNTY

CONSOLIDATED WATER POWER AND PAPER COMPANY

JAMES K. AND ELIZABETH A. LANDES

RICHARD E. AND HELEN L. WOODS

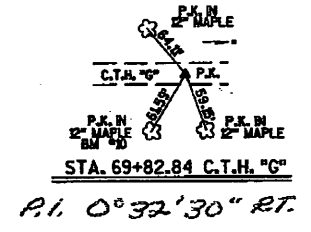
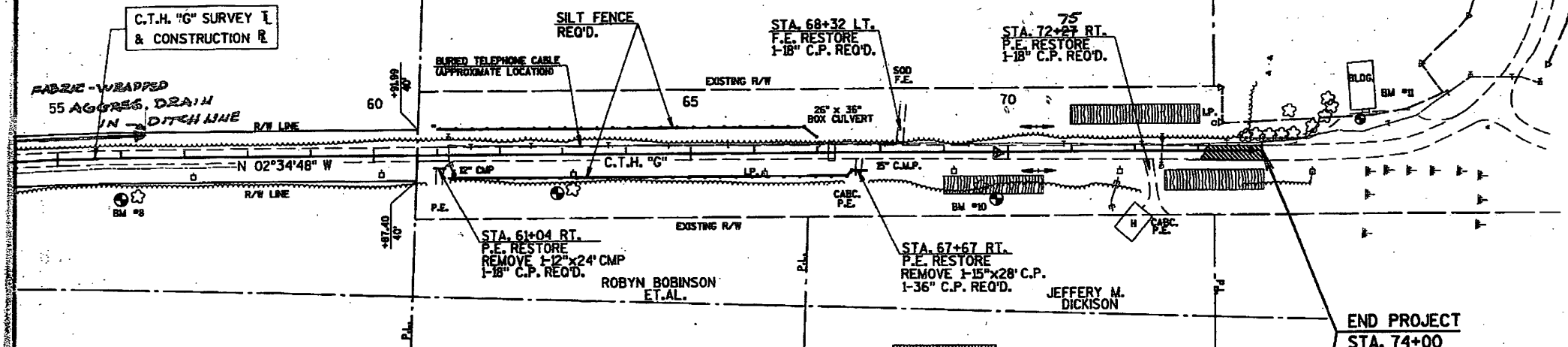
9453-02-70

NO. 52

PLAN AND PROFILE FOR

ONEIDA COUNTY

C.T.H. "C"



NO.	STA.	DESCRIPTION	ELEV.
8	56+25	6" NAIL IN 16" POPLAR-60' RT.	1618.67
9	63+18	6" NAIL IN 8" BASSWOOD-55' RT.	1608.96
10	69+60	6" NAIL IN 10" MAPLE-55' RT.	1612.85
11	75+55	TOP N.E. CORN. CONC. PORCH-45' LT.	1607.84

NET LENGTH OF CENTERLINE STA. 55+00 TO STA. 74+00=1900 FEET

