

FED. AID DIST. NO.	STATE	FED. AID PROJ. NO.	FISCAL YEAR	SHEET NO.	TOTAL SHEETS
4	WISC.	299	1922	1	27

WISCONSIN PROJECT NO. DIV. JOB NO. 1956

**INDEX OF SHEETS**

SHEET NO.	TITLE PAGE
1	TITLE PAGE
2	TYPICAL CROSS-SECTION OF IMPROVEMENT & ESTIMATE
3	RIGHT OF WAY PLAN
4	PLAN AND PROFILE STA. 0+00 TO STA. 30+00
5	" " " 30+00 " " 60+00
6	" " " 60+00 " " 81+00
7	" " " 81+00 " " 110+00
8	" " " 110+00 " " 137+00
9-12	CONCRETE STRUCTURES AND GUARD RAIL
13-27	CROSS SECTIONS GRADE SHEETS (15)

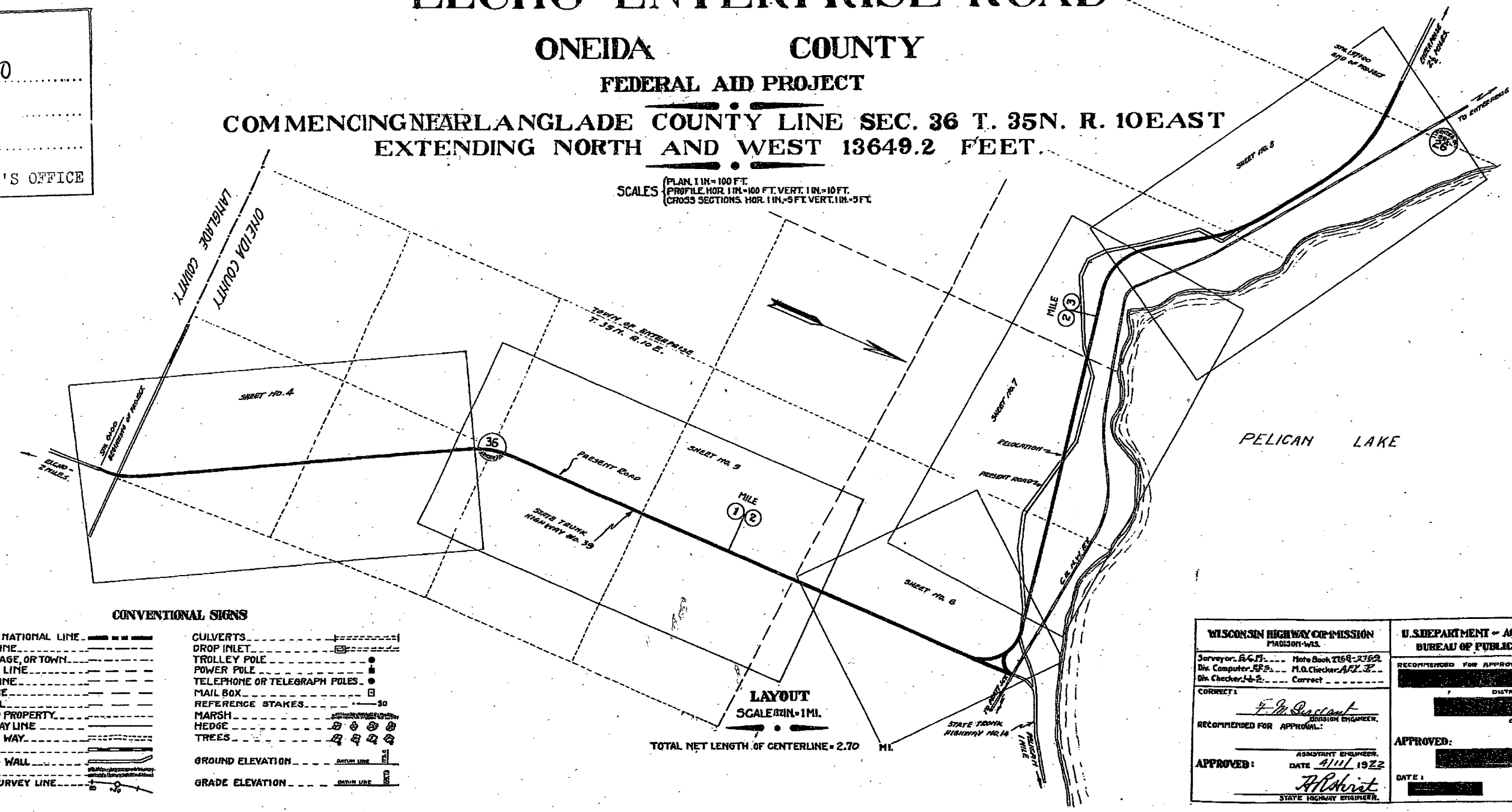
**STATE OF WISCONSIN**  
**WISCONSIN HIGHWAY COMMISSION**  
**PLAN AND PROFILE OF PROPOSED**  
**ELCHO-ENTERPRISE ROAD**

**ONEIDA COUNTY**  
**FEDERAL AID PROJECT**

**COMMENCING NEAR LANGLADE COUNTY LINE SEC. 36 T. 35N. R. 10E EAST**  
**EXTENDING NORTH AND WEST 13649.2 FEET.**

MAP # **A 2389**  
DATE FILED **3/9/10**  
BY **RA**  
DESCRIPTION FILED  
**ONEIDA CO. SURVEYOR'S OFFICE**

SCALES (PLAN 1 IN = 100 FT. PROFILE HOR. 1 IN = 100 FT. VERT. 1 IN = 10 FT. CROSS SECTIONS HOR. 1 IN = 5 FT. VERT. 1 IN = 5 FT.)



**CONVENTIONAL SIGNS**

STATE AND NATIONAL LINE	CULVERTS
COUNTY LINE	DROP INLET
CITY, VILLAGE, OR TOWN	TROLLEY POLE
TOWNSHIP LINE	POWER POLE
SECTION LINE	TELEPHONE OR TELEGRAPH POLES
FENCE LINE	MAIL BOX
GUARD RAIL	REFERENCE STAKES
UNFENCED PROPERTY	MARSH
RIGHT OF WAY LINE	HEDGE
TRAVELED WAY	TREES
RAILROADS	GROUND ELEVATION
RETAINING WALL	GRADE ELEVATION
LEVEE	
BASE OR SURVEY LINE	

WISCONSIN HIGHWAY COMMISSION MADISON, WIS.	U.S. DEPARTMENT OF AGRICULTURE BUREAU OF PUBLIC ROADS
Surveyor: <b>R.G.M.</b> Note Book <b>2158-2162</b> Dist. Computer: <b>EF.S.</b> P.O. Checker: <b>AL.F.</b> Dist. Checker: <b>H.S.</b> Correct	RECOMMENDED FOR APPROVAL: [Signature] DISTRICT ENGINEER [Signature] CHIEF ENGINEER
CORRECT: <b>F. J. DeLoach</b> RECOMMENDED FOR APPROVAL: ASSISTANT ENGINEER APPROVED: <b>Alphinst</b> DATE <b>4/11/1922</b> STATE HIGHWAY ENGINEER	APPROVED: [Signature] DIRECTOR DATE:

STATE	FISCAL YEAR	PROJECT NO.	SHEET NO.	TOTAL SHEETS
WISC.	1925	295	2	27

WISCONSIN PROJECT NO. DIV. JOB NO. 7556

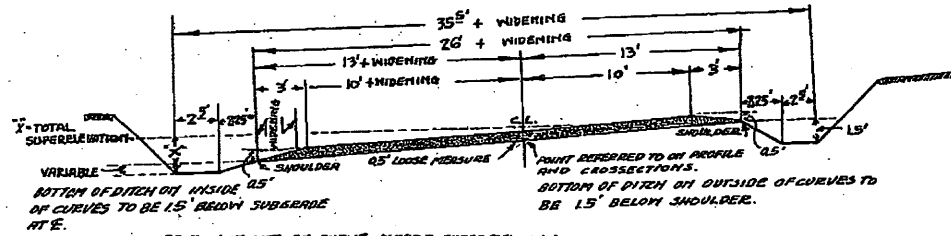
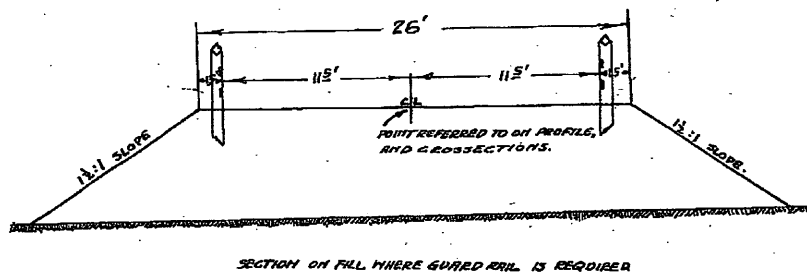
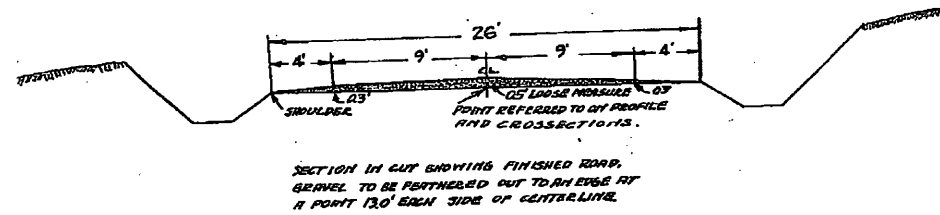
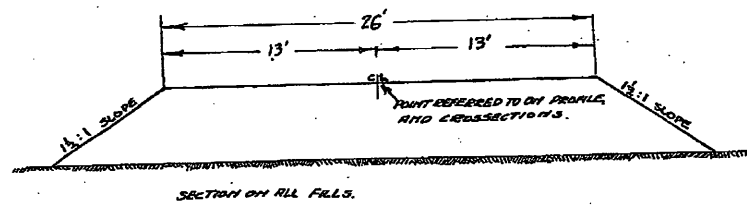
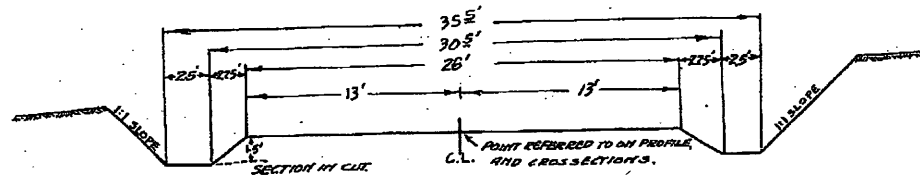
ESTIMATE OF QUANTITIES

FILE NO.	STATION TO STATION	NET LENGTH FEET	CLEANING & CURBING ACRES	EXCAVATION			STRUCTURES		GUARD RAIL	26' FOOT GRAVEL SURFACING	NEW R/W	DITCHING
				EARTH CU YDS.	ROCK CU YDS.	BORROW CU YDS.	CONCRETE CLAS. 1	CONCRETE CLAS. 2				
1	0+52+0	5200	160.07	4071	—	—	4.28	220	1700	1739.0	—	—
2	52+104+0	51492	26.83	5817	—	181	24.05	541	305	17200	339	—
3	104+137+0	3300	27.23	4260	—	84	18.07	492	880	1119.0	150	—
2	Approaches	6144	—	50	—	178	—	—	—	177	—	125
<b>TOTALS</b>				14210	309	4638	1253	—	3885	4749.0	489	125

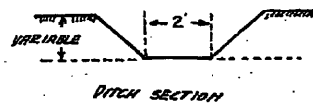
3% & 4% SLOPE

SPECIFICATIONS

THIS PROJECT TO BE EXECUTED UNDER WISCONSIN STANDARD SPECIFICATIONS AS SUBMITTED TO THE U.S. BUREAU OF PUBLIC ROADS ON FEB 21 1922. GENERAL FOR SURFACING TO MEET TOP GRADE SPECIFICATIONS.

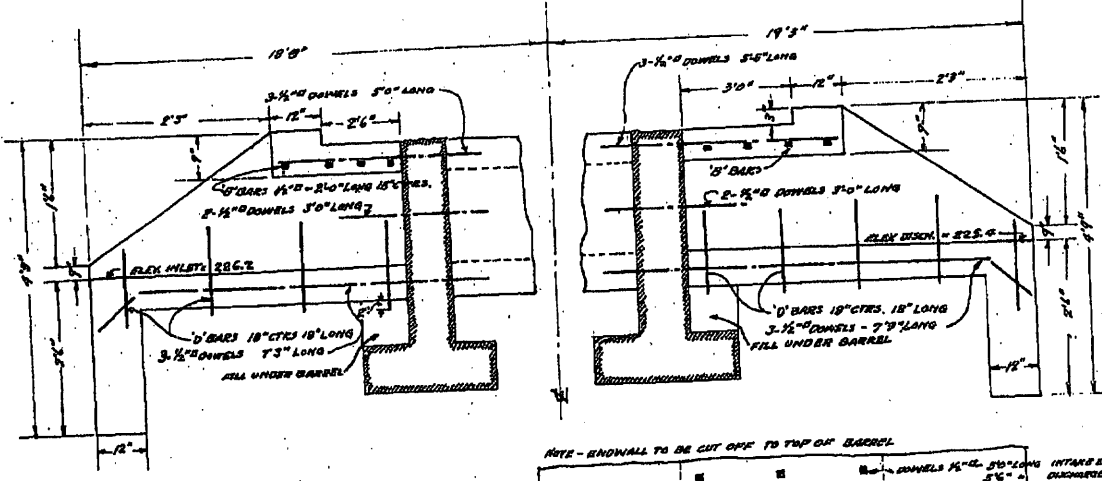


SECTION IN CUT ON CURVE WHERE SUPERELEVATION AND WIDENING ARE REQUIRED. SUPERELEVATION IS SPECIFIED ON PLAN. FULL SUPERELEVATION REQUIRED FOR ENTIRE LENGTH OF CURVE FROM B.C. TO E.C. FROM THESE POINTS SUPERELEVATION TO BE UNIFORMLY REDUCED TO NORMAL CROWN 50' BEYOND ENDS OF CURVES. GRAVEL SURFACING TO BE PLACED FULL DEPTH AS SHOWN ON CURVING SECTIONS FOR ENTIRE LENGTH OF CURVE B.C. TO E.C. AND REDUCED UNIFORMLY TO NORMAL CROWN 50' BEYOND ENDS OF CURVES. THE SURFACING SHALL BE FULL DEPTH BETWEEN POINTS 3' INSIDE OF THE SHOULDER LINE AND SHALL BE FURNISHED TO AN EDGE FROM THE POINT 3' INSIDE THE SHOULDER LINE, TO THE SHOULDER LINE.

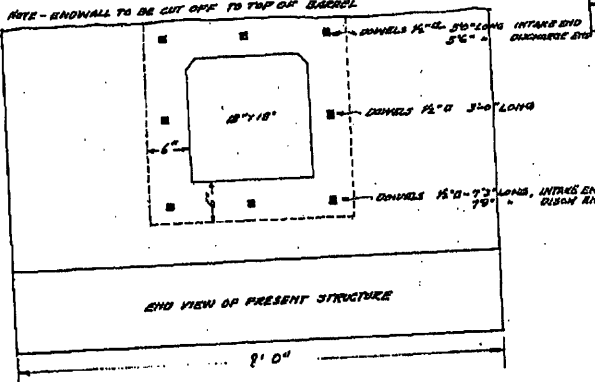


TYPICAL CROSS SECTION FOR 26 FOOT FEATHER-EDGE GRAVEL ROAD. WISCONSIN HIGHWAY COMMISSION MADISON-WIS. SCALE 1 IN = 5 FT.

A 2389 C



FOR DETAILS OF BARREL AND ENDWALLS SEE STANDARD PLAN FOR SIZE OF CULVERT EXTENSION



CUT OUT AND MAIL WITH ORDER FOR STEEL TOTAL STEEL REQUIRERS FOR ESTIMATION LISTED BELOW

NO	TYPE	SIZE	NO	LENGTH	NO	LENGTH	NO	LENGTH	NO	LENGTH	TOTAL STEEL
3	1/2"	3'0"	3	3'6"	3	7'8"	3	7'9"	8	2'0"	112'

STA. NO. OF CULVERT	DOUBLES NO.	DOUBLES SIZE	DOUBLES LENGTH	DOUBLES NO.	DOUBLES SIZE	DOUBLES LENGTH	DOUBLES NO.	DOUBLES SIZE	DOUBLES LENGTH	DOUBLES NO.	DOUBLES SIZE	DOUBLES LENGTH	DOUBLES NO.	DOUBLES SIZE	DOUBLES LENGTH	TOTAL STEEL
18+20	3	1/2"	3'0"	3	3/4"	3'6"	3	3/4"	7'8"	3	3/4"	7'9"	8	1/2"	2'0"	112'

INFORMATION REQUIRED TO MAKE OUT CULVERTS

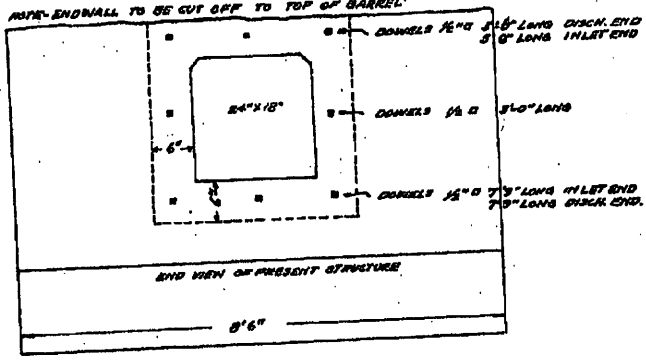
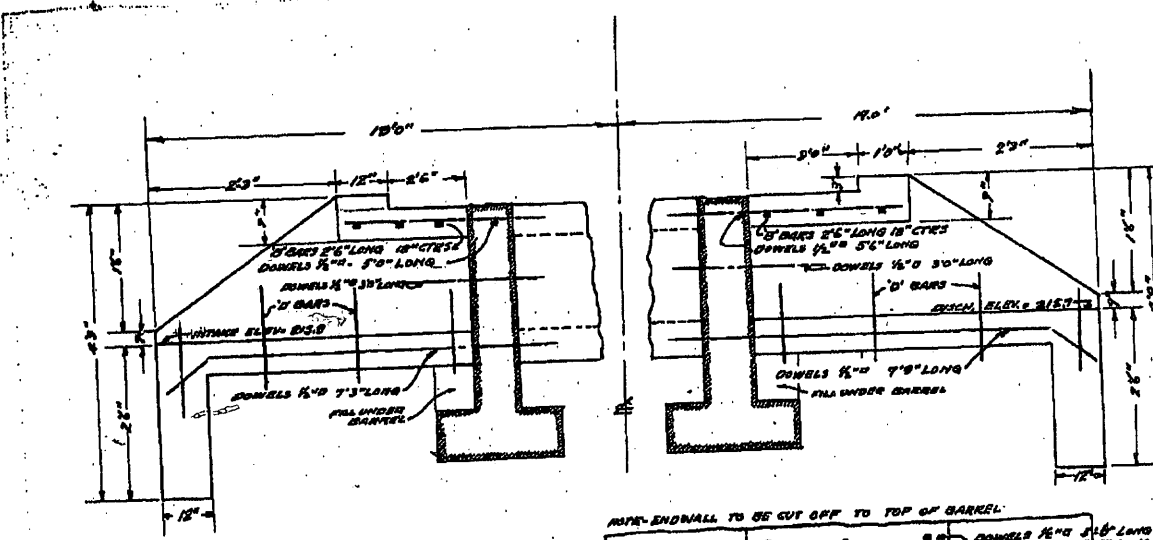
STA. NO. OF CULVERT	ELEV. OF DITCH 'D'	ELEV. OF INLET 'I'	DISTANCE ABOVE OR BELOW TOP OF STRUCTURE	DITCH	NO. OF STRIPS	ELEV. OF STRIP	NO. OF STRIPS
18+20	225.2	226.2	3.4	18	226.75		

CONCRETE = 260 CUYDS  
STEEL = 112 LBS.

STA 18+20  
DETAILS OF CULVERT CONSTRUCTION  
BLEND - ENTERPRISE ROAD  
DRAW NO. 7555  
MICHIGAN HIGHWAY COMMISSION  
APPROVED

Proj 295-A

Sta 18+20



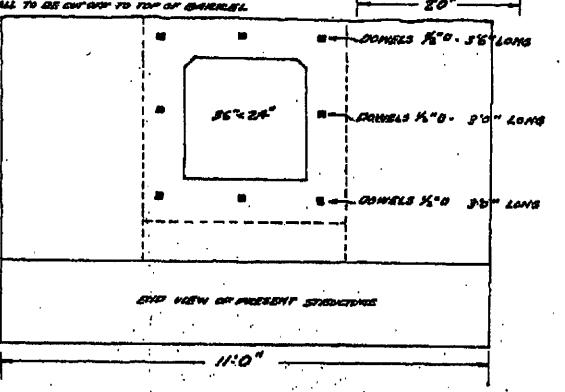
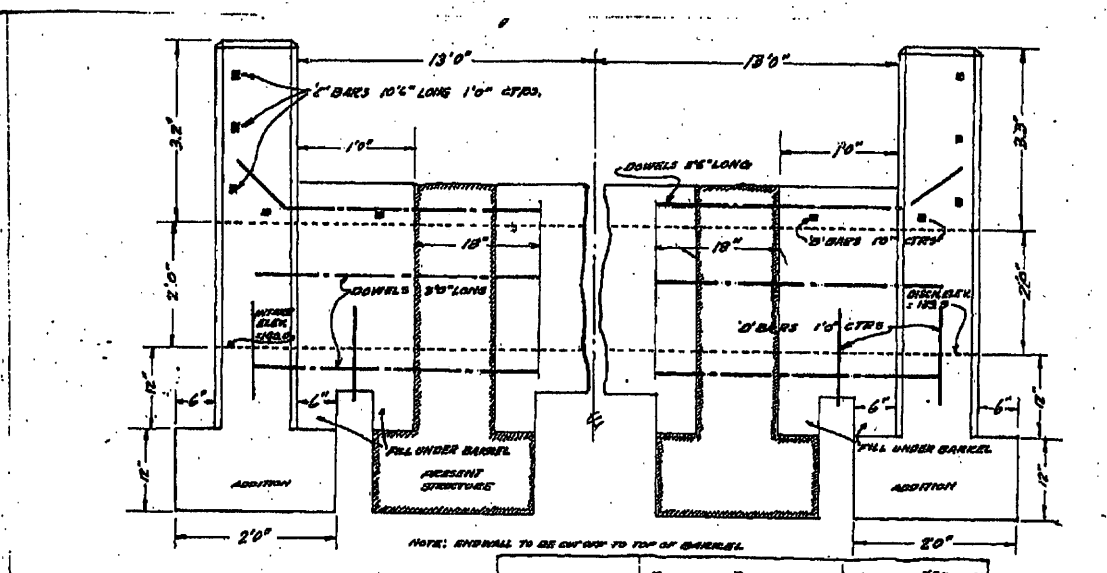
NO	SIZE	LGTH	AM. FT.	LBS
8	1/2"	3'0"	18	15
3	DOUBLES	3'0"	15	16.8
3	"	5'6"	26.0	26.0
7	"	7'9"	21.75	21.75
3	"	7'9"	23.25	108.0

CONCRETE = 230 CUYDS  
STEEL = 108 LBS.

STA 29+89  
DETAILS OF CULVERT EXTENSION  
BLEND - ENTERPRISE ROAD  
DRAW NO. 7555  
MICHIGAN HIGHWAY COMMISSION  
APPROVED

Proj 295-B

Sta 29+89



NO	SIZE	LGTH	AM. FT.	LBS
4	1/2"	3'0"	12.0	14.0
6	DOUBLES	3'6"	24.0	24.0
10	"	3'0"	30.0	30.0
16	"	7'8"	24.0	24.0
6	"	7'8"	58.0	130.0

CONCRETE = 680 CUYDS  
STEEL = 130 LBS.

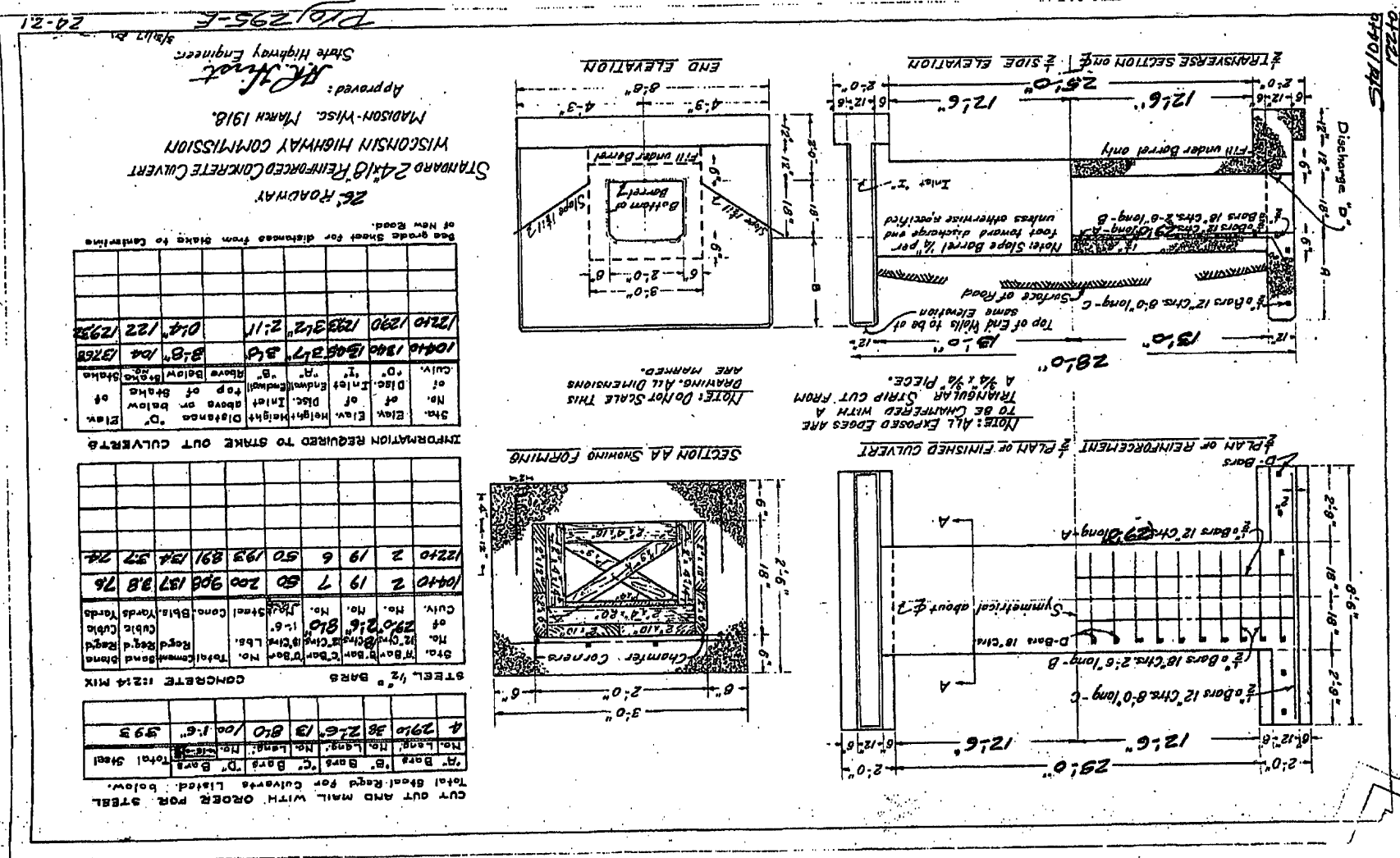
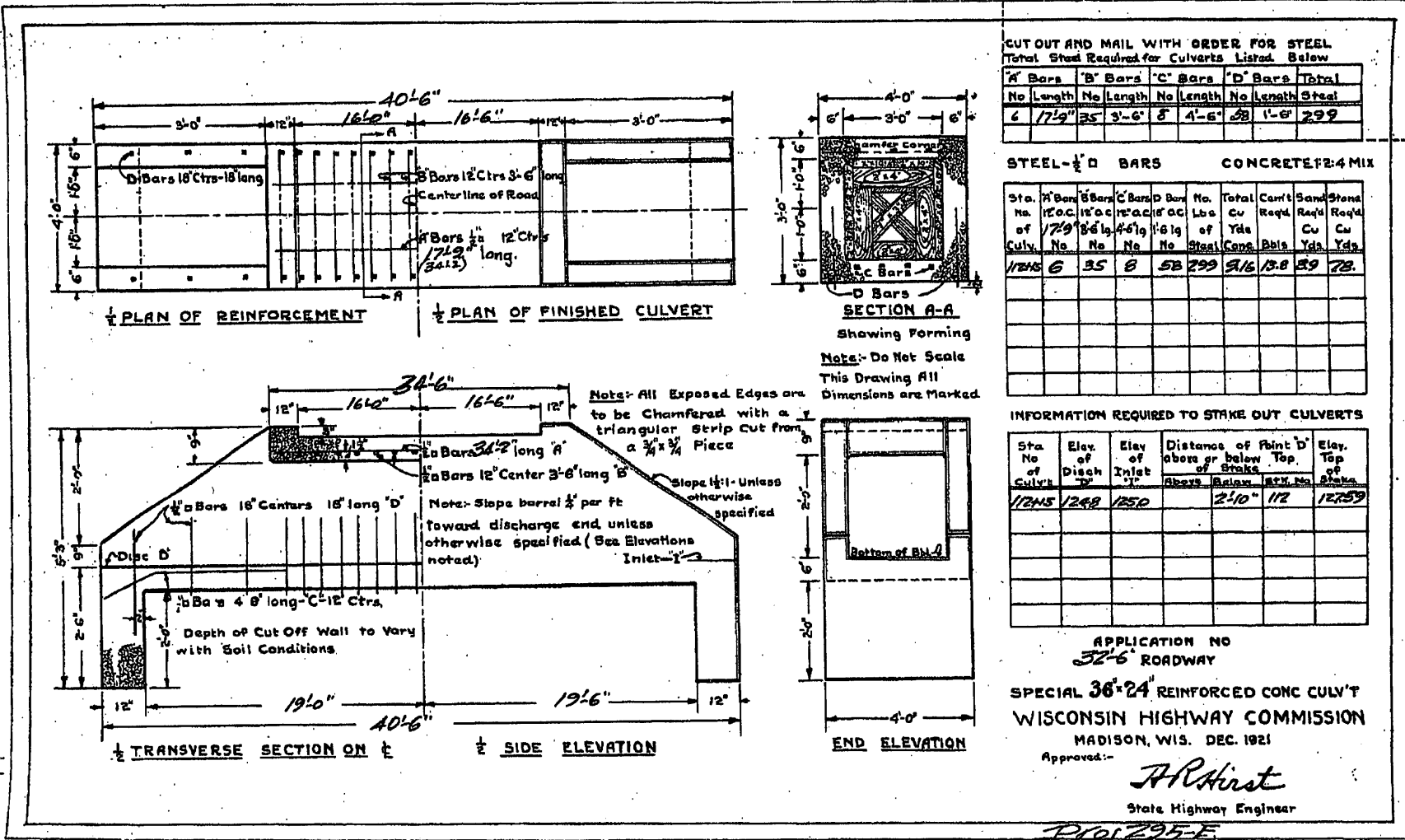
BLEND - ENTERPRISE ROAD  
DRAW NO. 7555  
STA 40+35  
DETAILS OF CULVERT EXTENSION  
MICHIGAN HIGHWAY COMMISSION  
APPROVED

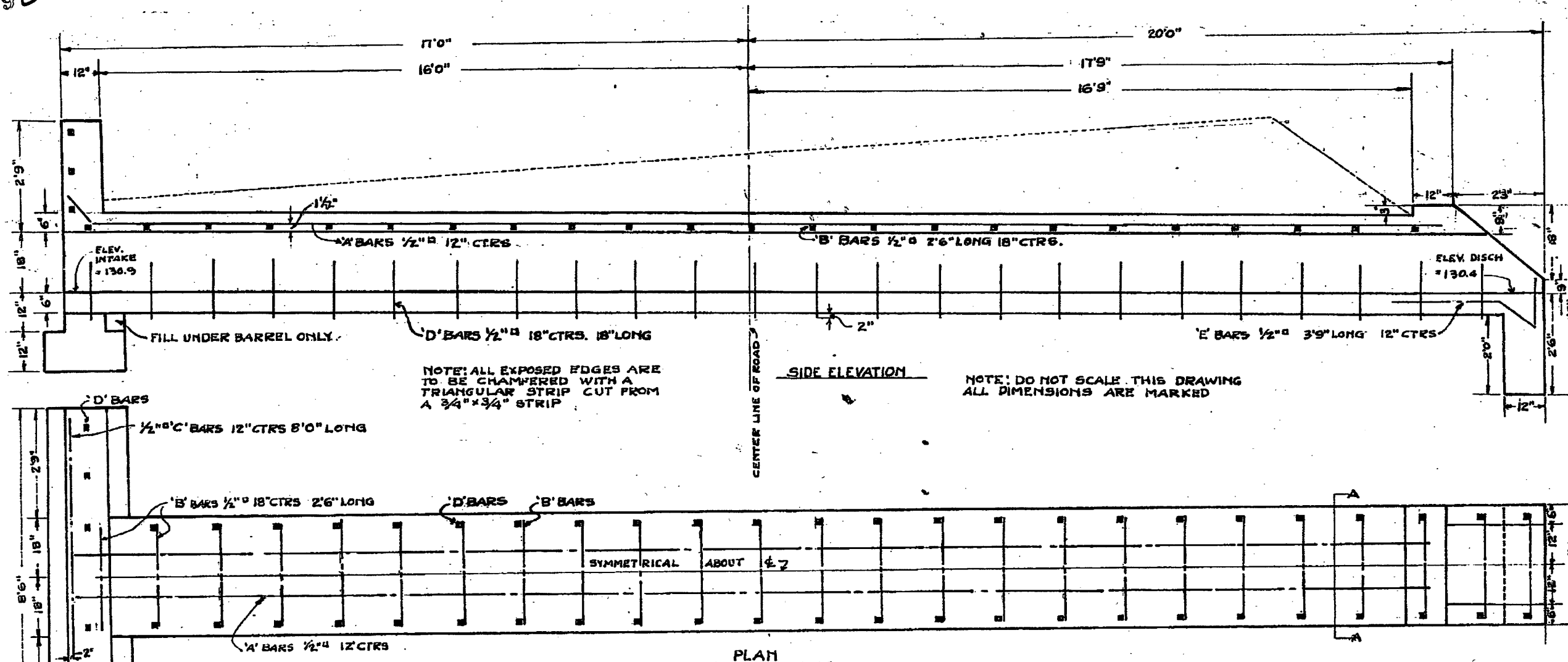
Proj 295-C

Sta 40+35

A 2389 C

A 2389 C

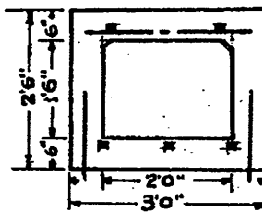
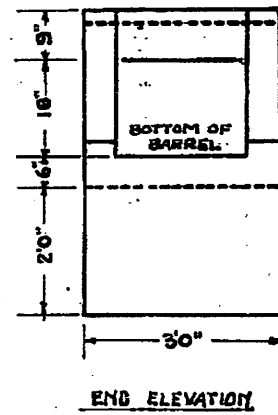
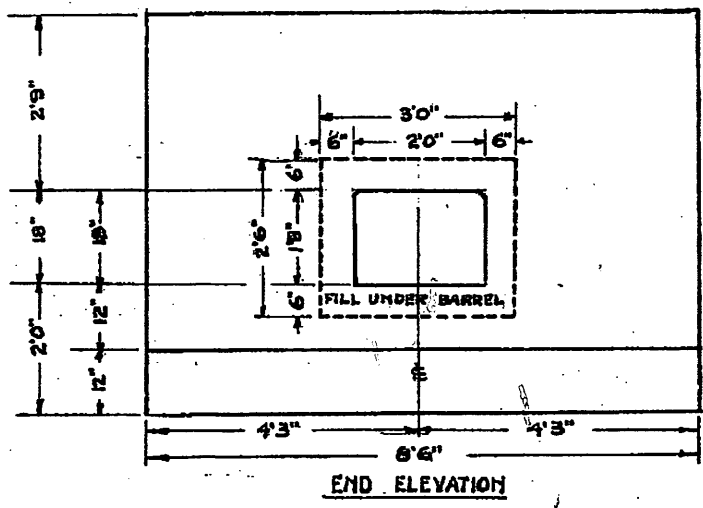




BAR	NO	SIZE	LENGTH	CTRS.
A	4	1/2" □	18'6"	12"
B	23	"	2'6"	18"
C	3	"	8'0"	12"
D	54	"	1'6"	18"
E	3	"	3'9"	12"

ELEV. INTAKE = 130.9  
 ELEV. DISCHARGE = 130.4  
 ELEV. TOP LEFT ENDWALL = 135.2  
 DIST TOP STK. NO. 78 ABOVE DISCH. = 14.4'  
 ELEV. TOP STK. NO. 78 = 144.78

STA 78+0



CONCRETE 8.71 CU. YDS.  
 STEEL 211 LBS.

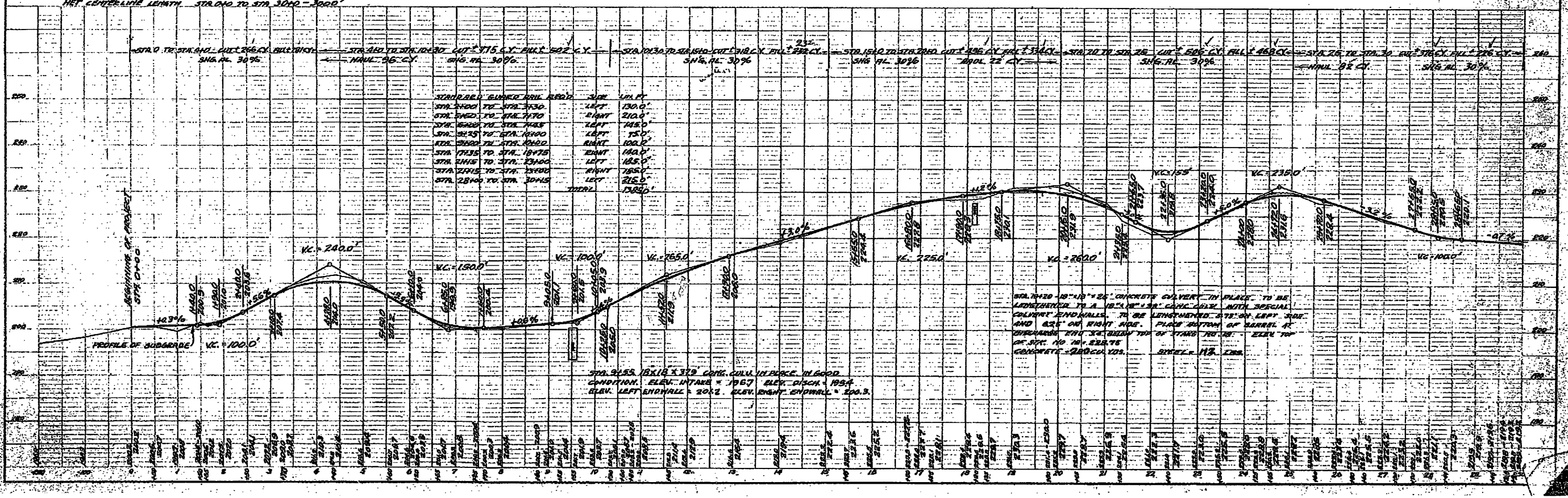
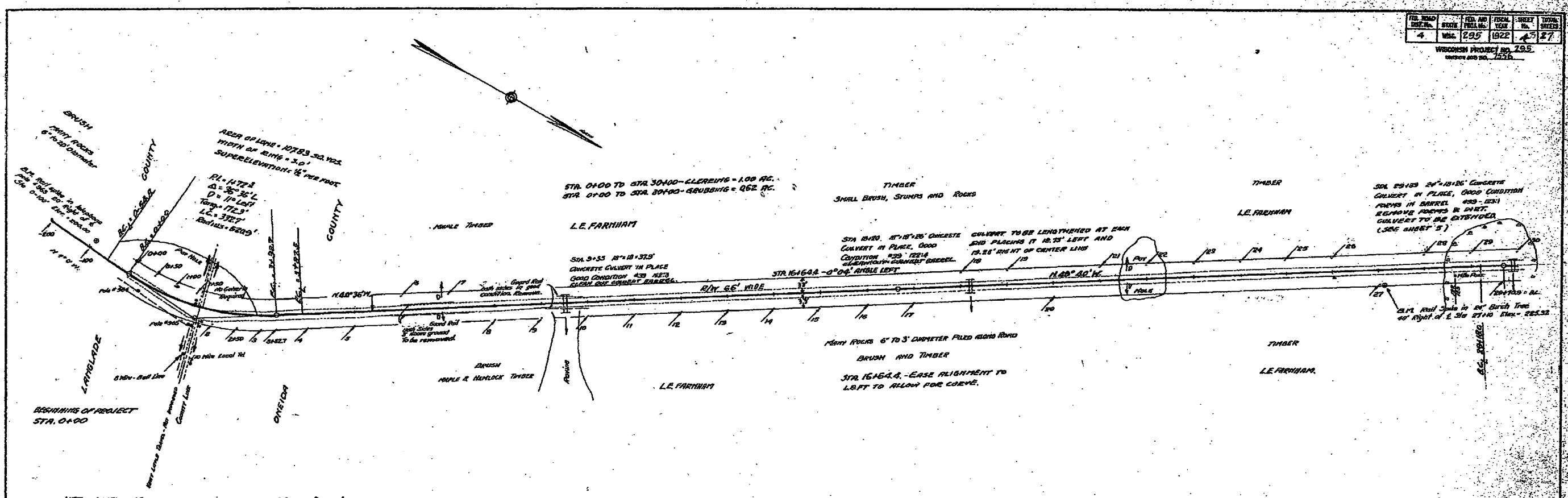
STA 78+00 24" X 18" X 37' CONC. CULV  
 ELCHO-ENTERPRISE ROAD  
 DIST. JOB NO 7596 FED. PROJ. NO 295  
 WISCONSIN HIGHWAY COMMISSION  
 MADISON WIS.  
 APPROVED

Proj 295-D STATE HIGHWAY ENGINEER

NO.	DATE	BY	REVISION
1	1925		
2	1925		
3	1925		
4	1925		

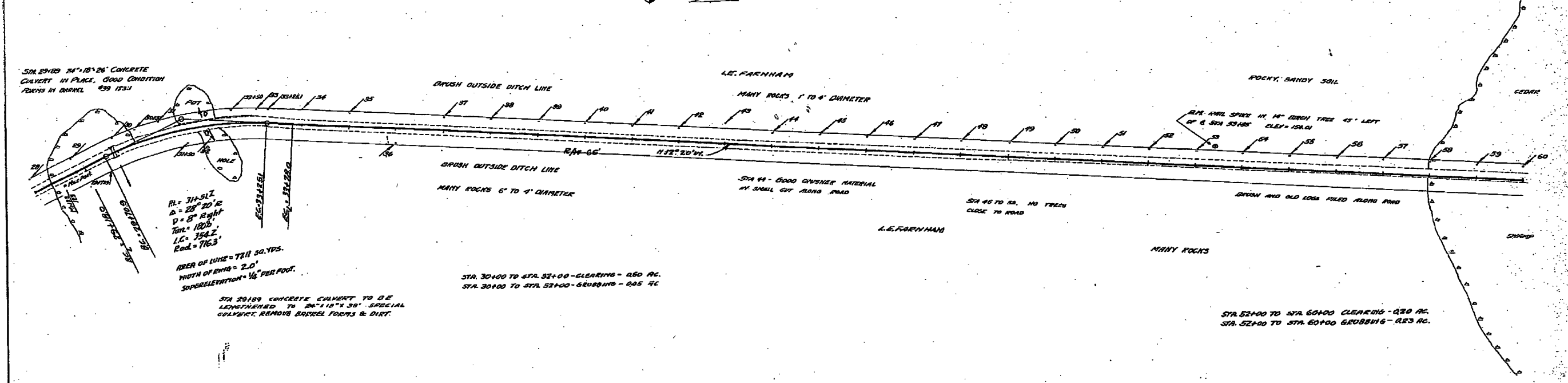
NO.	DATE	BY	REVISION
1	1925		
2	1925		
3	1925		
4	1925		

NO.	DATE	BY	REVISION
1	1925		
2	1925		
3	1925		
4	1925		

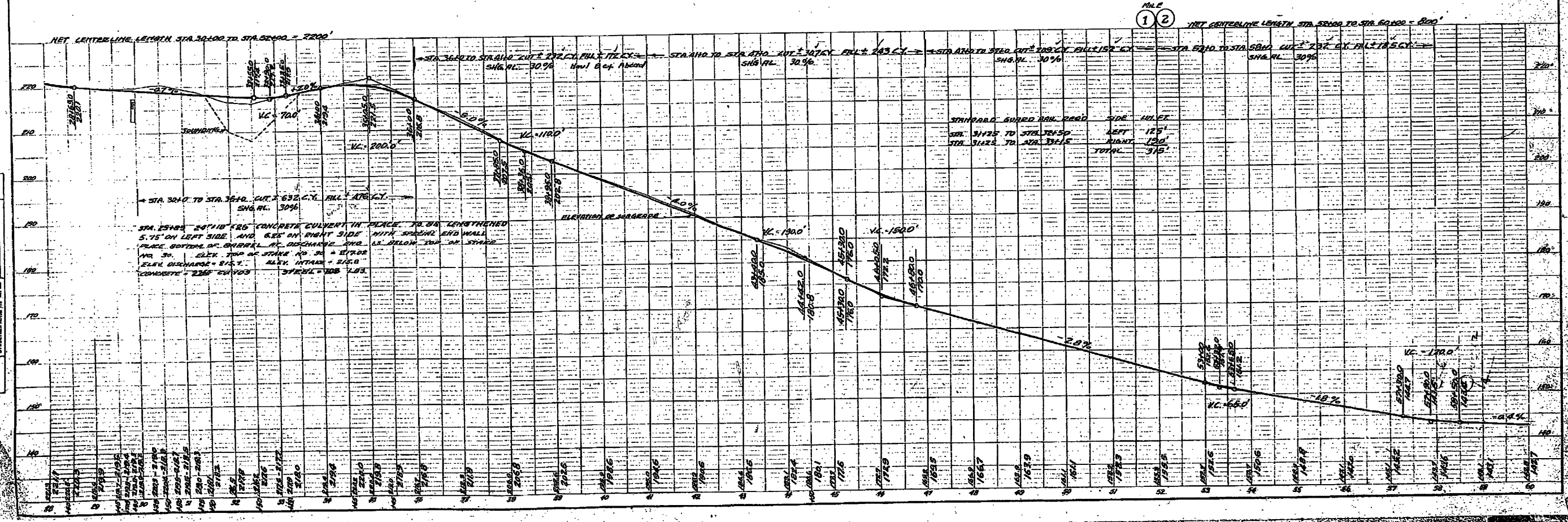


FED. PROJ. DIST. No.	STATE	FED. AID PROJ. No.	FISCAL YEAR	SHEET No.	TOTAL SHEETS
4	WIS.	295	1922	27	27
WISCONSIN PROJECT NO. 295					
CONTRACT NO. 1256					

DATE	BY	DESCRIPTION
		DESIGNED
		PLANNED
		ADJUSTED
		BY FIELD
		IN FIELD

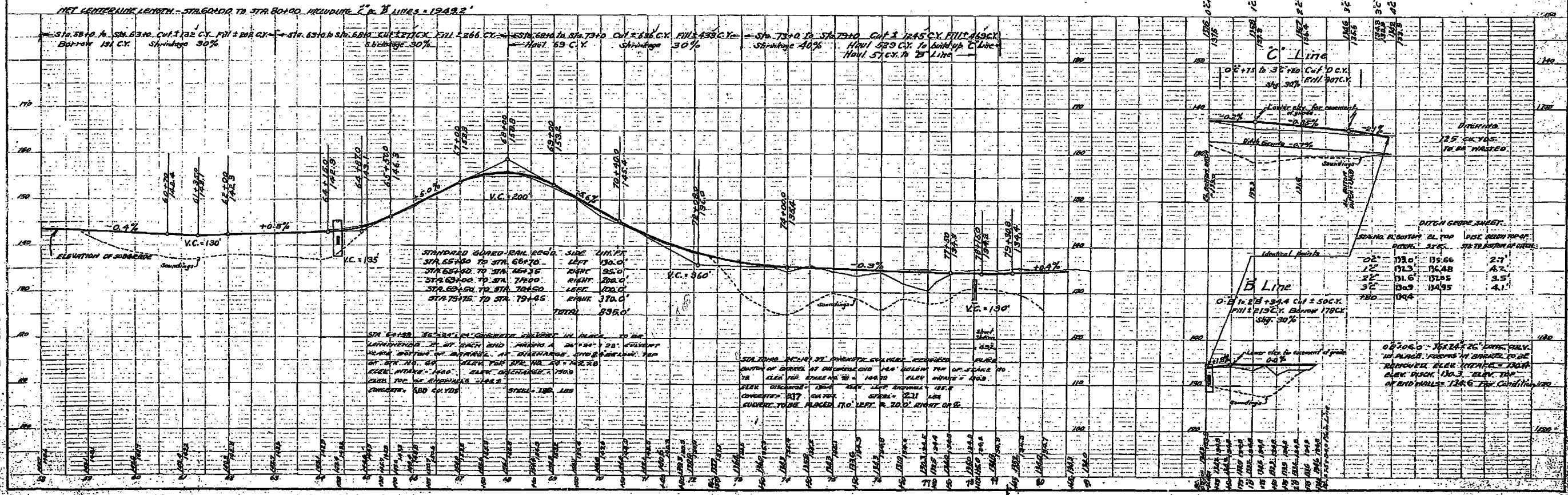
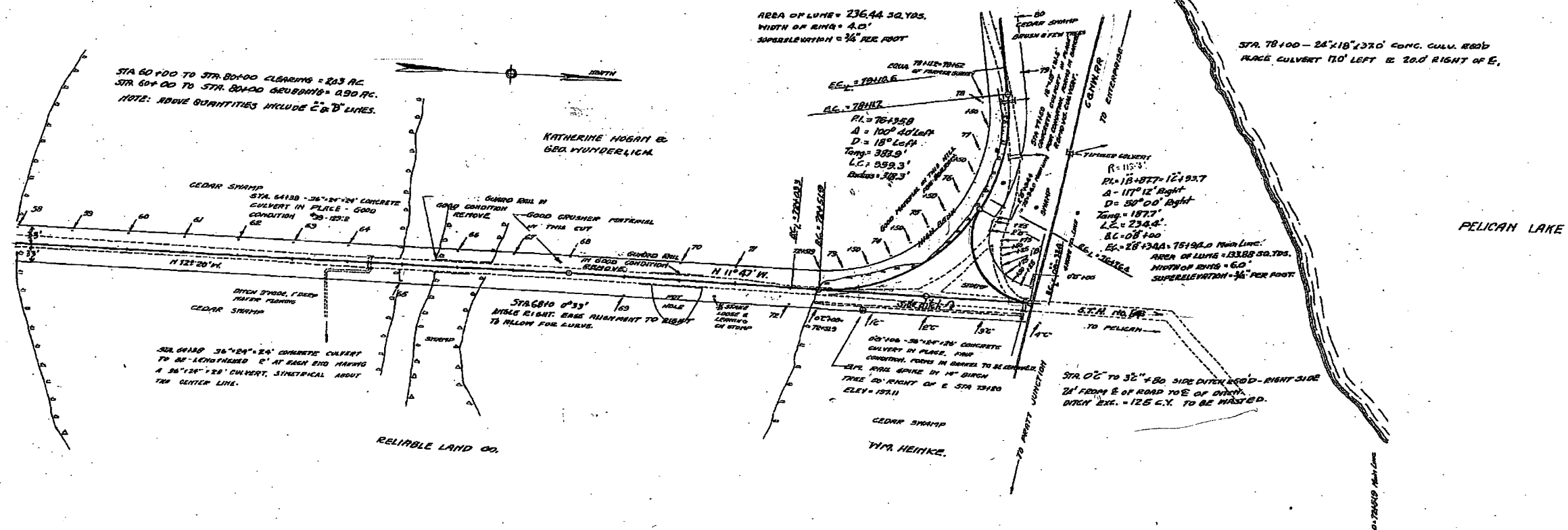


DATE	BY	DESCRIPTION
		DESIGNED
		PLANNED
		ADJUSTED
		BY FIELD
		IN FIELD



FED. ROAD DIST. NO.	STATE	FED. AID PROJ. NO.	FISCAL YEAR	SHEET NO.	TOTAL SHEETS
4	WIS.	295	1927	15	27

WISCONSIN PROJECT NO. 295  
DRAWING NO. 1556



NO.	DESCRIPTION	DATE
1	DESIGNED	
2	REVISION	
3	REVISION	
4	REVISION	
5	REVISION	

NO.	DESCRIPTION	DATE
1	DESIGNED	
2	REVISION	
3	REVISION	
4	REVISION	
5	REVISION	

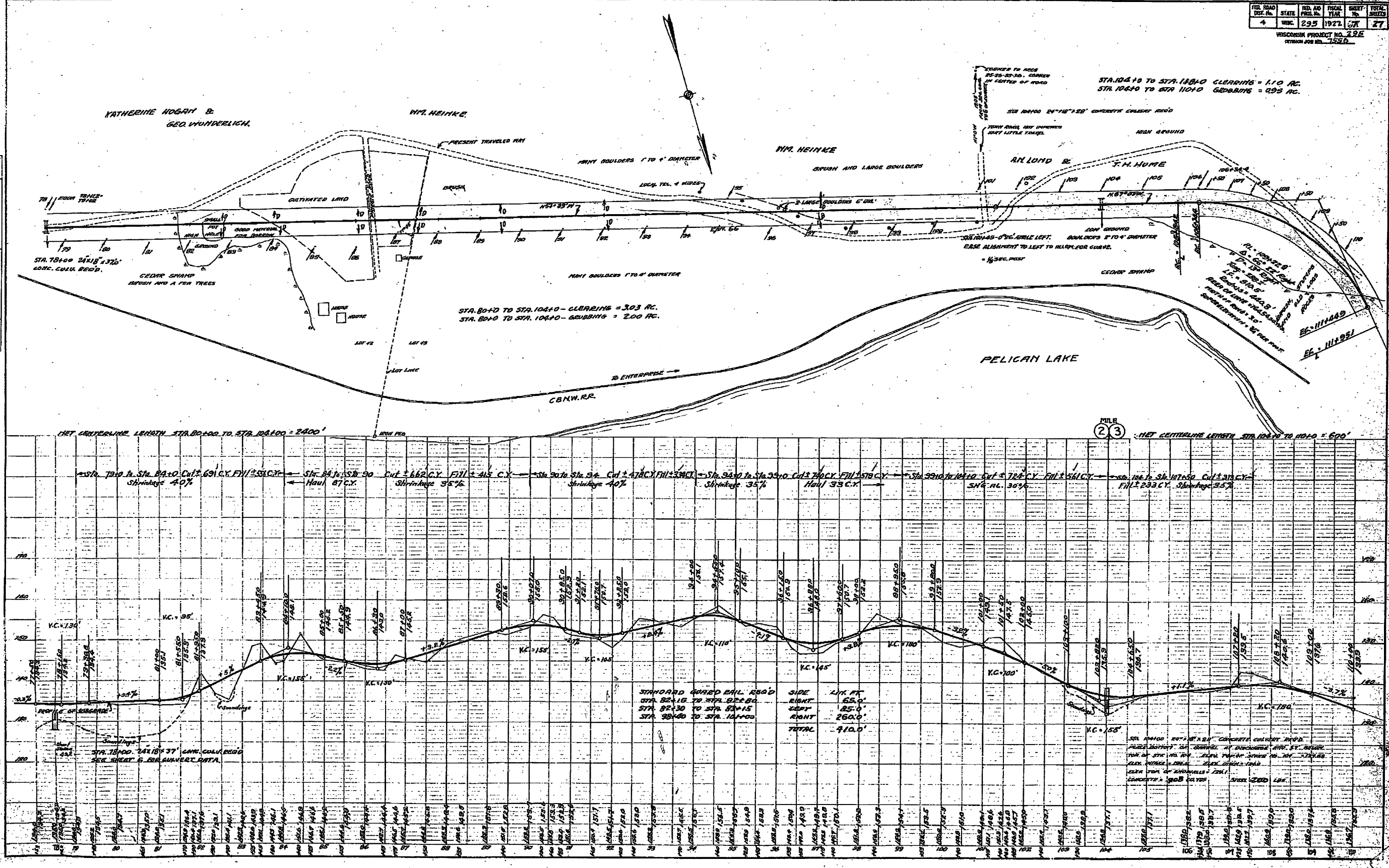


FDL ROAD DIST. No.	STATE	FDL NO. PROJ. No.	YEAR	SHEET No.	TOTAL SHEETS
4	WIS.	295	1927	27	27

WISCONSIN PROJECT NO. 295  
DESIGNED BY W. J. S. S.

DATE	BY
APPROVED	BY
REVISIONS	BY
DATE	BY

DATE	BY
APPROVED	BY
REVISIONS	BY
DATE	BY



FED. ROAD DIST. NO.	STATE	FED. AID FISCAL YEAR	SHEET NO.	TOTAL SHEETS
4	WIS.	295 1972	27	27

WISCONSIN PROJECT NO. 235  
DRAWN BY: J.S.

