

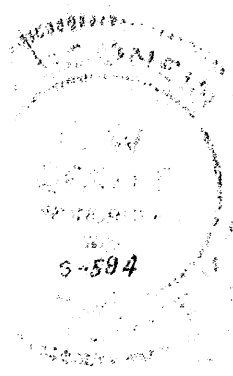
STATE HWY 70

This map is made from the notes
E.F. Kowalke of his survey of
1953.
Lloyd W. Scott, have resurveyed
parcel of land and find that the
Iron Pipes on the South line in
fact the two Iron Pipes have been
removed and replaced with
wooden fence along the North
approaching on said parcel of

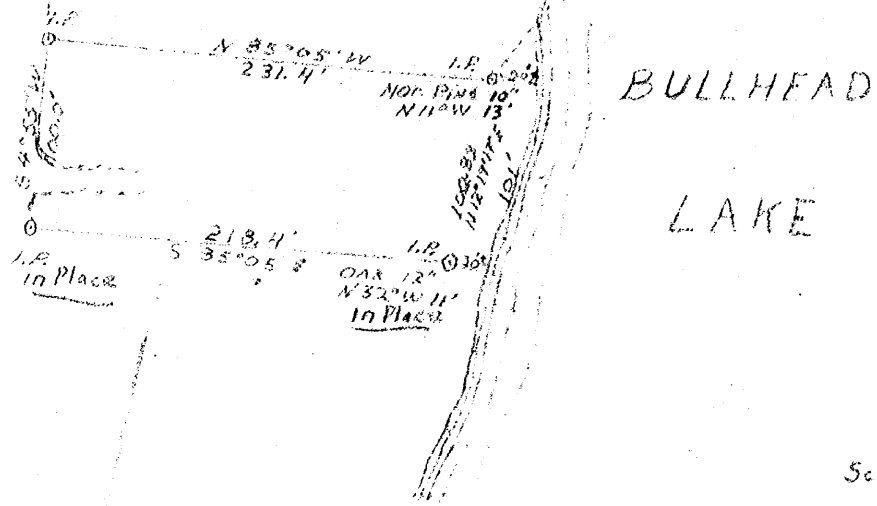
Lloyd W. Scott
Lloyd W. Scott

RECEIVED & FILED # **A242**
Oneida County Surveyor's Office
Date **FEB. 10 1988**
By *MJH*
OCS Area #

SEC. 10 S. 11 M.C.



ROAD



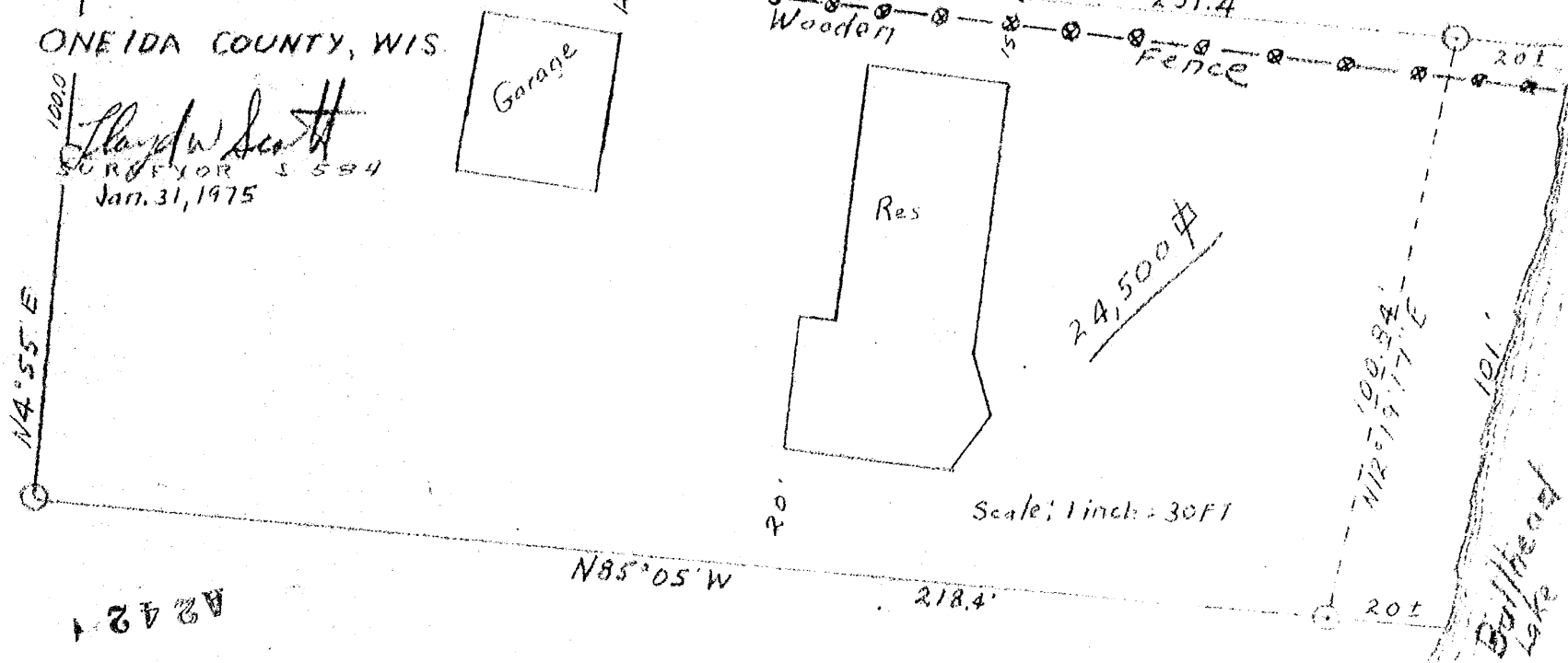
BULLHEAD LAKE

Scale: 1 inch = 100 FT
Jan 31, 1975

PART OF
GOV'T. LOT 1
SECTION 10 T 39 N R 6 E

ONEIDA COUNTY, WIS.

Lloyd W. Scott
SURVEYOR 5594
Jan. 31, 1975



Scale: 1 inch = 30 FT

RECEIVED & FILED # **A242**
Oneida County Surveyor's Office
Date **Feb 17 1988**
By *D.M. V. Knoff*
OCS Area # **16-10-3966**

A242