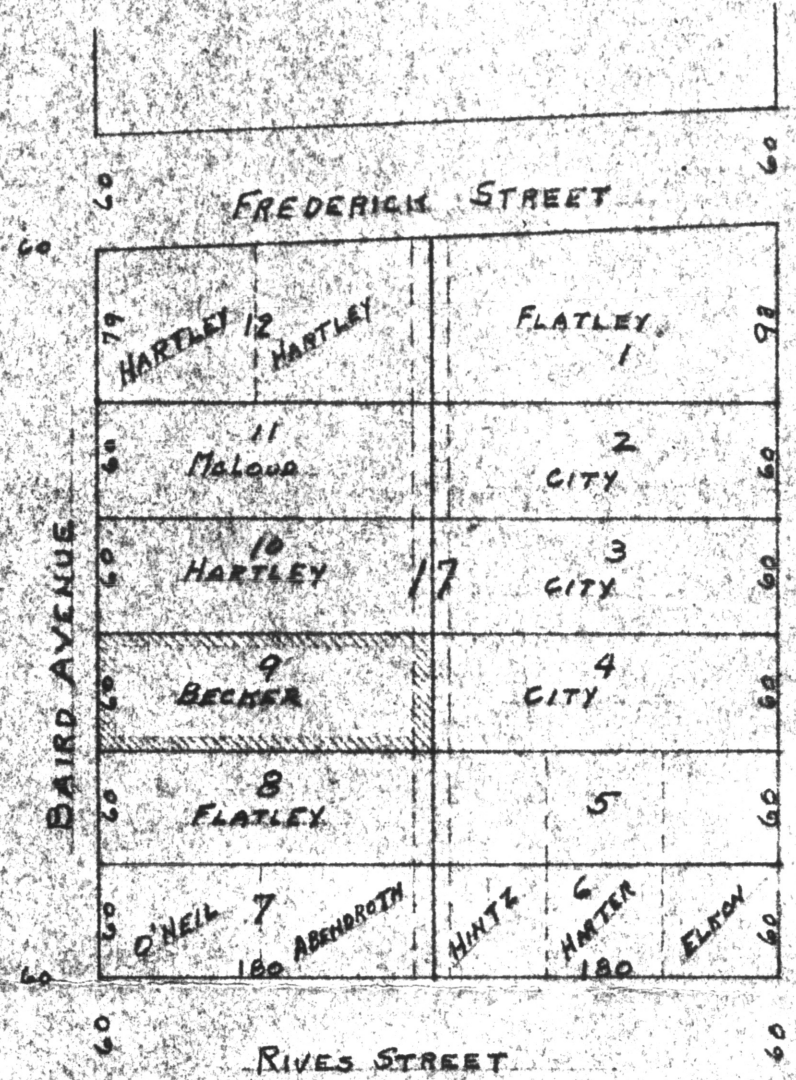


DETAILED PLOT PLAN

SCALE: 1" = 20'



GENERAL PLAN

SCALE: 1" = 100'

MAP # **A2438**
 DATE FILED **7/29/10**
 BY **JH**
 DESCRIPTION FILED
 ONEIDA CO. SURVEYOR'S OFFICE

SURVEYOR'S CERTIFICATE
 WE HEREBY CERTIFY THAT WE HAVE SURVEYED A PARCEL OF LAND IN THE CITY OF RHINELANDER, WISCONSIN MORE PARTICULARLY DESCRIBED AS FOLLOWS: - LOT NINE (9) OF BLOCK SEVENTEEN (17) SECOND ADDITION TO THE CITY OF RHINELANDER, ONEIDA COUNTY, WISCONSIN, AND THAT THE ATTACHED PLAT IS A TRUE AND CORRECT REPRESENTATION OF THE LANDS SO SURVEYED BY US.
 DATED OCT. 8, 1946.

GENISOT ENGINEERING CO.
 PER *P. L. Schroeder*



SURVEY FOR G. BECKER
LOT 9 - BLOCK 17 - SECOND ADDITION
RHINELANDER WISCONSIN
SURVEY MADE OCTOBER 8, 1946
 SCALE: AS SHOWN P.L.S.
 PWA. No. **GENISOT ENGINEERING CO.**
173-1 RHINELANDER, WIS.