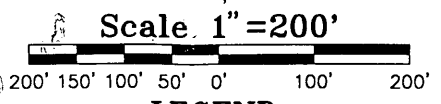
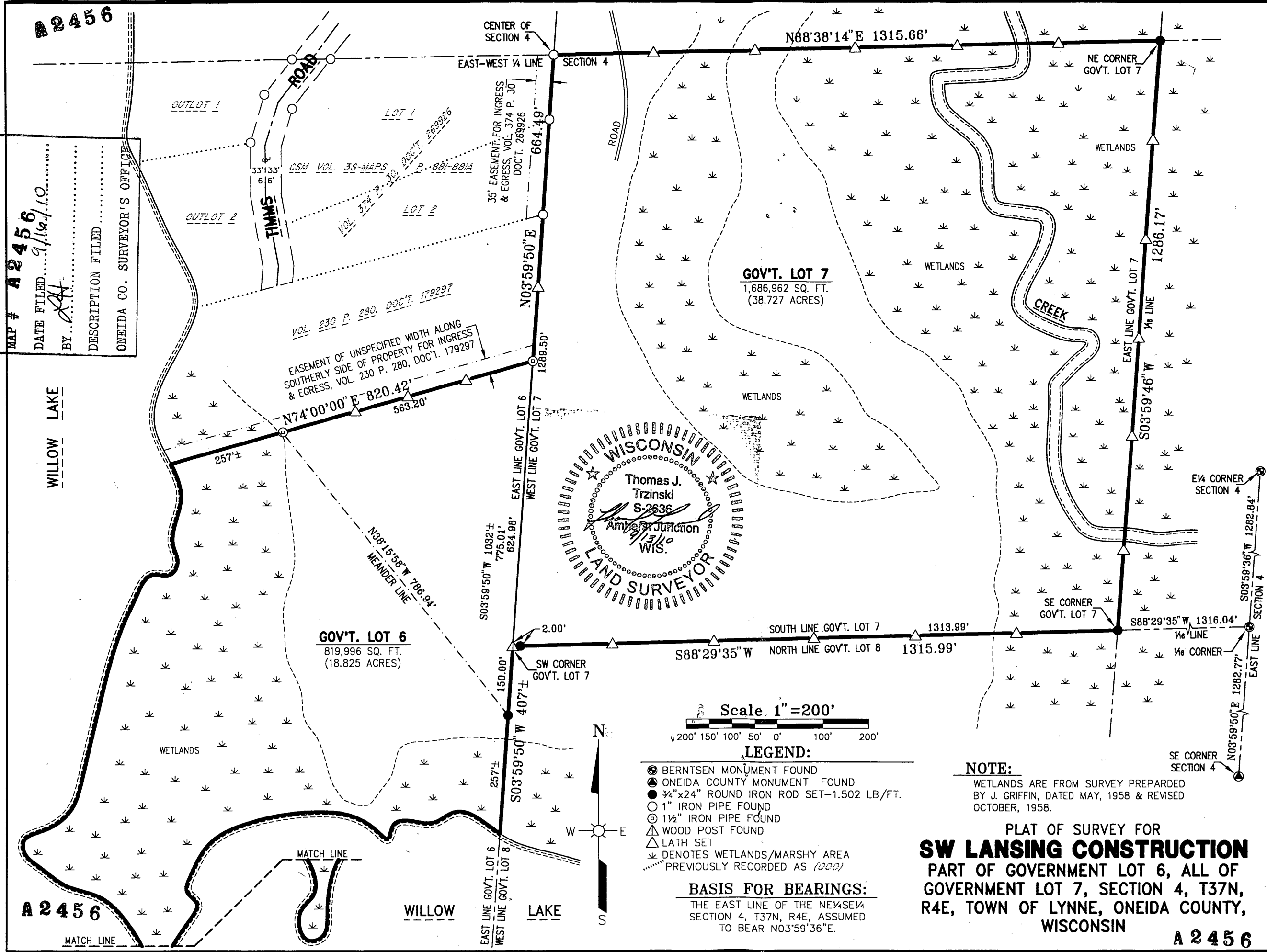


A 2456

A 2456

MAP # **A 2456**  
 DATE FILED *9/16/05*  
 BY *JST*  
 DESCRIPTION FILED  
 ONEIDA CO. SURVEYOR'S OFFICE

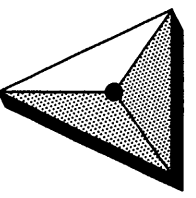


- LEGEND:**
- BERNTSEN MONUMENT FOUND
  - ONEIDA COUNTY MONUMENT FOUND
  - 3/4"x24" ROUND IRON ROD SET-1.502 LB/FT.
  - 1" IRON PIPE FOUND
  - ⊙ 1 1/2" IRON PIPE FOUND
  - △ WOOD POST FOUND
  - △ LATH SET
  - \* DENOTES WETLANDS/MARSHY AREA
  - ..... PREVIOUSLY RECORDED AS (000)

**BASIS FOR BEARINGS:**  
 THE EAST LINE OF THE NE 1/4 SE 1/4 SECTION 4, T37N, R4E, ASSUMED TO BEAR N03°59'36"E.

**NOTE:**  
 WETLANDS ARE FROM SURVEY PREPARED BY J. GRIFFIN, DATED MAY, 1958 & REVISED OCTOBER, 1958.

**PLAT OF SURVEY FOR SW LANSING CONSTRUCTION**  
 PART OF GOVERNMENT LOT 6, ALL OF GOVERNMENT LOT 7, SECTION 4, T37N, R4E, TOWN OF LYNNE, ONEIDA COUNTY, WISCONSIN



ESP GROUP, INC.  
**LAMPERT-LEE & ASSOCIATES**  
 ENGINEERS • SURVEYORS • PLANNERS

10968 State Hwy. 54 East • Wisconsin Rapids, WI 54494-8718  
 715-424-3131 or 715-344-0068 • FAX 715-423-8774  
 COPYRIGHT © 2005 BY ESP GROUP, INC. ALL RIGHTS RESERVED. DUPLICATION BY WRITTEN PERMISSION ONLY.

REVISIONS	
DATE	DESCRIPTION
-	-
-	-
-	-
-	-
-	-

SCALE: 1"=200'  
 DWG. DATE: AUG. 31, 2005  
 DESIGNER:  
 DRAWN BY: JIM BRASEL  
 CHECKED BY: *JST* 9/1/05  
 APPROVAL: *JST* 9/1/05  
 DWG. NO. 9039-B-1-B  
 PROJECT NO. 05-15

PLAN SHEET SHEET **1** OF 1 SHEET(S)

A 2456

A 2456