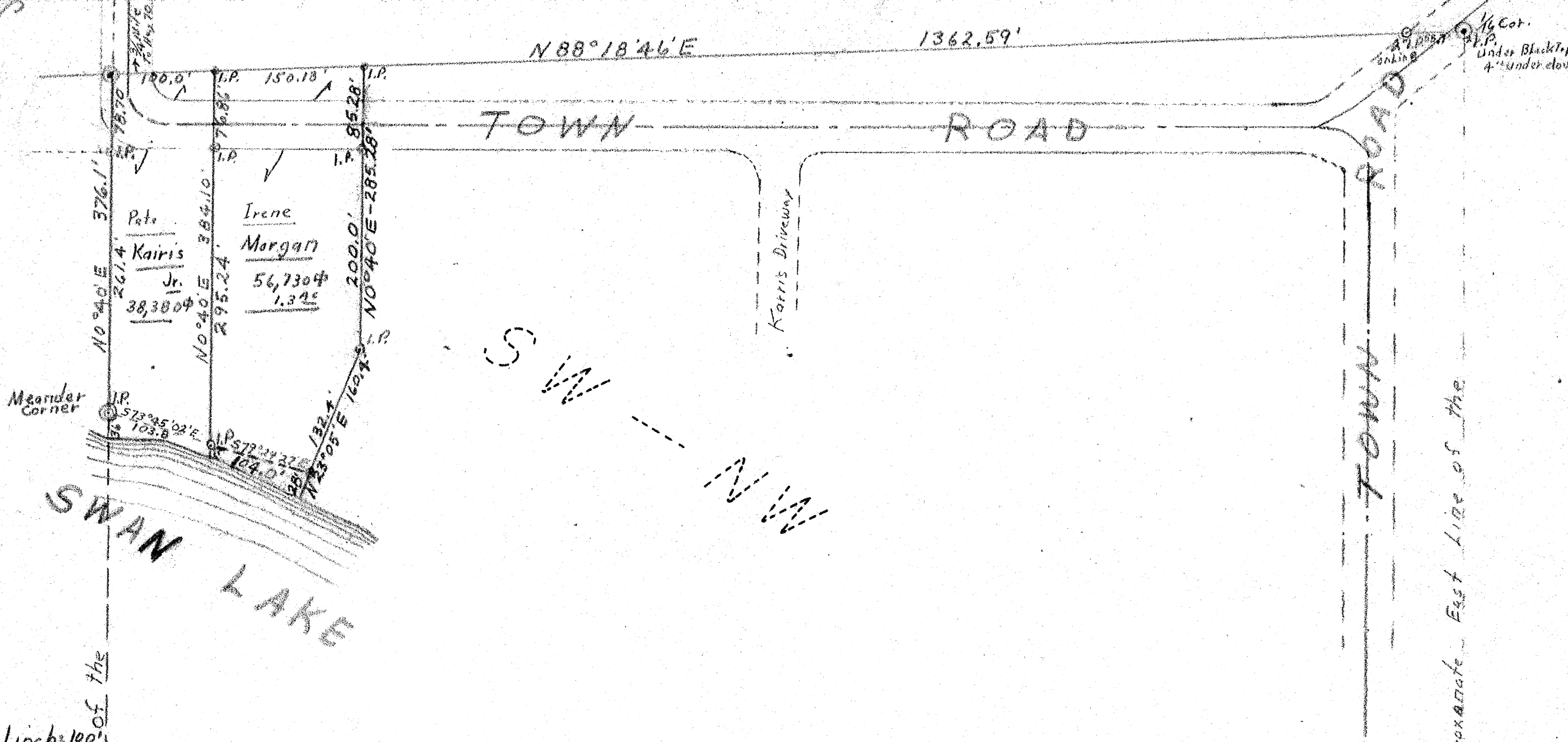
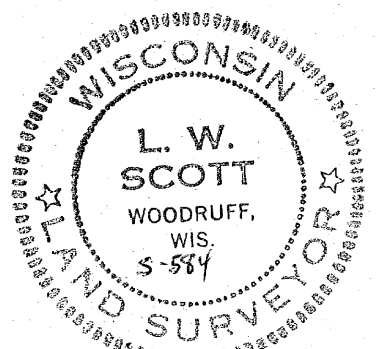


Scale: 1 inch = 100'
Aug. 26, 1976

West line of the

PART OF
SW 1/4 - NW 1/4
SECTION 16 T39N-R6E
ONEIDA COUNTY, WISC.

L. W. Scott
SURVEYOR S-584



Approximate East line of the

RECEIVED & FILED # 4020
Oneida County Surveyor's Office
Date: FEB. 10, 1985
By: MTH

RECEIVED & FILED # 4020
Oneida County Surveyor's Office
Date: 22 Oct 77
By: D M Woodruff