

-LEGEND-

- EXISTING CONDOMINIUM UNIT AND IT'S NUMBER
- The area within the staked boundaries around each individual Unit is a "Limited Common Element" for that Unit within the boundaries.
- PARKING AREA FOR UNIT NUMBER INDICATED "LIMITED COMMON ELEMENT"
- "LCE" - "LIMITED COMMON ELEMENT"
- 6" x 6" CONCRETE MONUMENT FOUND IN PLACE
  - 2" IRON PIPE FOUND IN PLACE
  - 1-1/2" IRON PIPE FOUND IN PLACE
  - 1-1/4" IRON PIPE FOUND IN PLACE
  - 1" IRON PIPE FOUND IN PLACE
  - ⊗ 5/8" IRON ROD FOUND IN PLACE
  - RAILROAD SPIKE FOUND IN PLACE
  - 1" IRON PIPE SET
  - △ COMPUTED ANGLE POINT
  - ( ) BEARING AND DISTANCE OF RECORD
- Pipe is 0.56" West of Line
- Pipe is 0.10" East of Line
- Pipe is 0.13" South of Line

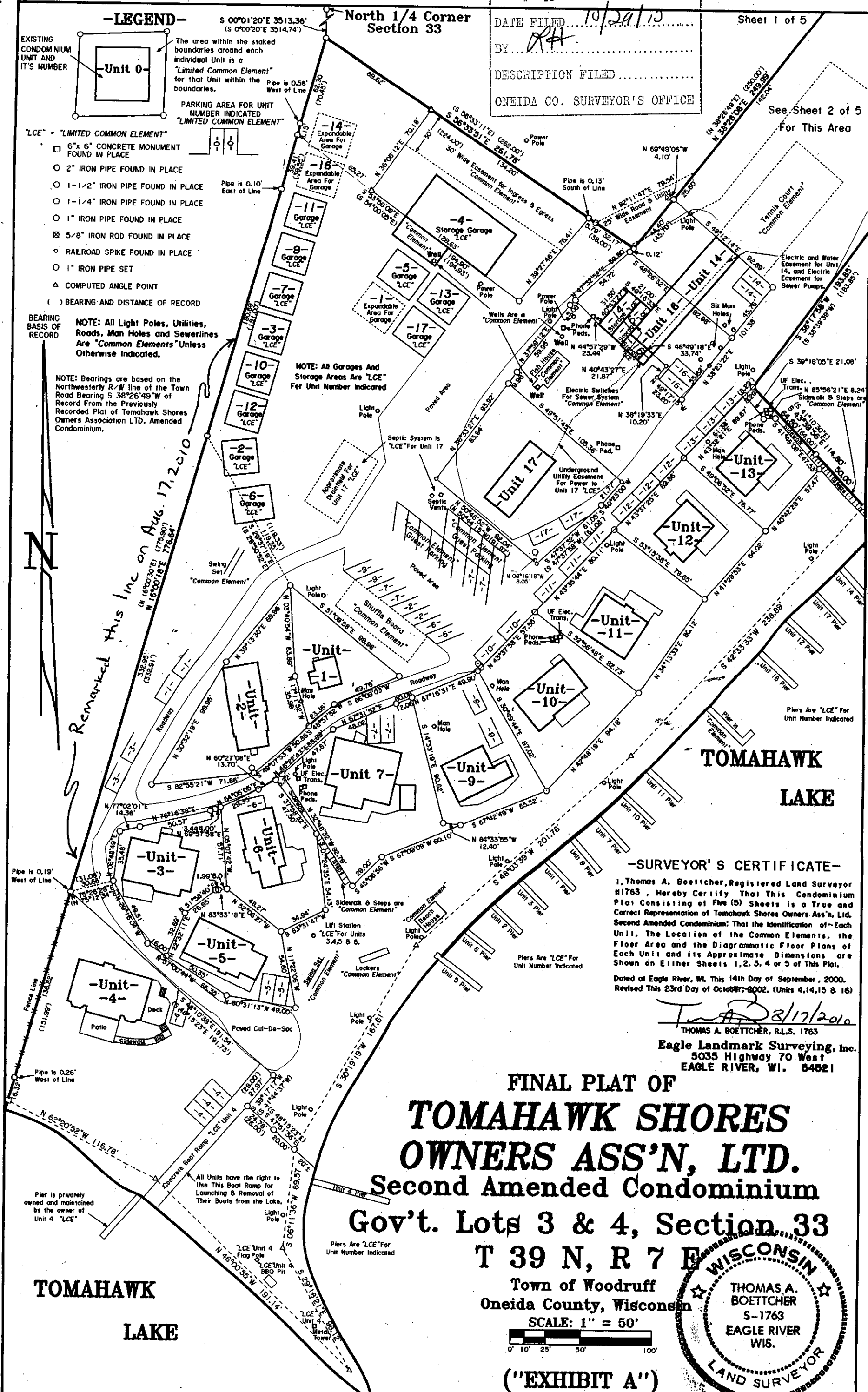
NOTE: All Light Poles, Utilities, Roads, Man Holes and Sewerlines Are "Common Elements" Unless Otherwise Indicated.

NOTE: Bearings are based on the Northwestern R/W line of the Town Road Bearing S 38°26'49"W of Record From the Previously Recorded Plat of Tomahawk Shores Owners Association LTD, Amended Condominium.

NOTE: All Garages And Storage Areas Are "LCE" For Unit Number Indicated

Remarked this line on Aug. 17, 2010

See Sheet 2 of 5 For This Area



**TOMAHAWK LAKE**

-SURVEYOR'S CERTIFICATE-

I, Thomas A. Boettcher, Registered Land Surveyor #1763, hereby certify that this Condominium Plat consisting of five (5) sheets is a true and correct representation of Tomahawk Shores Owners Ass'n, Ltd. Second Amended Condominium. That the identification of each unit, the location of the common elements, the floor area and the diagrammatic floor plans of each unit and its approximate dimensions are shown on either sheets 1, 2, 3, 4 or 5 of this plat.

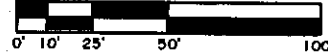
Dated at Eagle River, WI, this 14th day of September, 2000. Revised this 23rd day of October, 2002. (Units 4, 14, 15 & 16)

THOMAS A. BOETTCHER, R.L.S. 1763  
 Eagle Landmark Surveying, Inc.  
 5035 Highway 70 West  
 EAGLE RIVER, WI. 54521

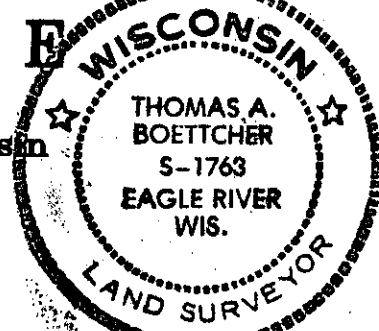
FINAL PLAT OF  
**TOMAHAWK SHORES OWNERS ASS'N, LTD.**  
 Second Amended Condominium  
 Gov't. Lots 3 & 4, Section 33

T 39 N, R 7 E  
 Town of Woodruff  
 Oneida County, Wisconsin

SCALE: 1" = 50'



("EXHIBIT A")



**TOMAHAWK LAKE**