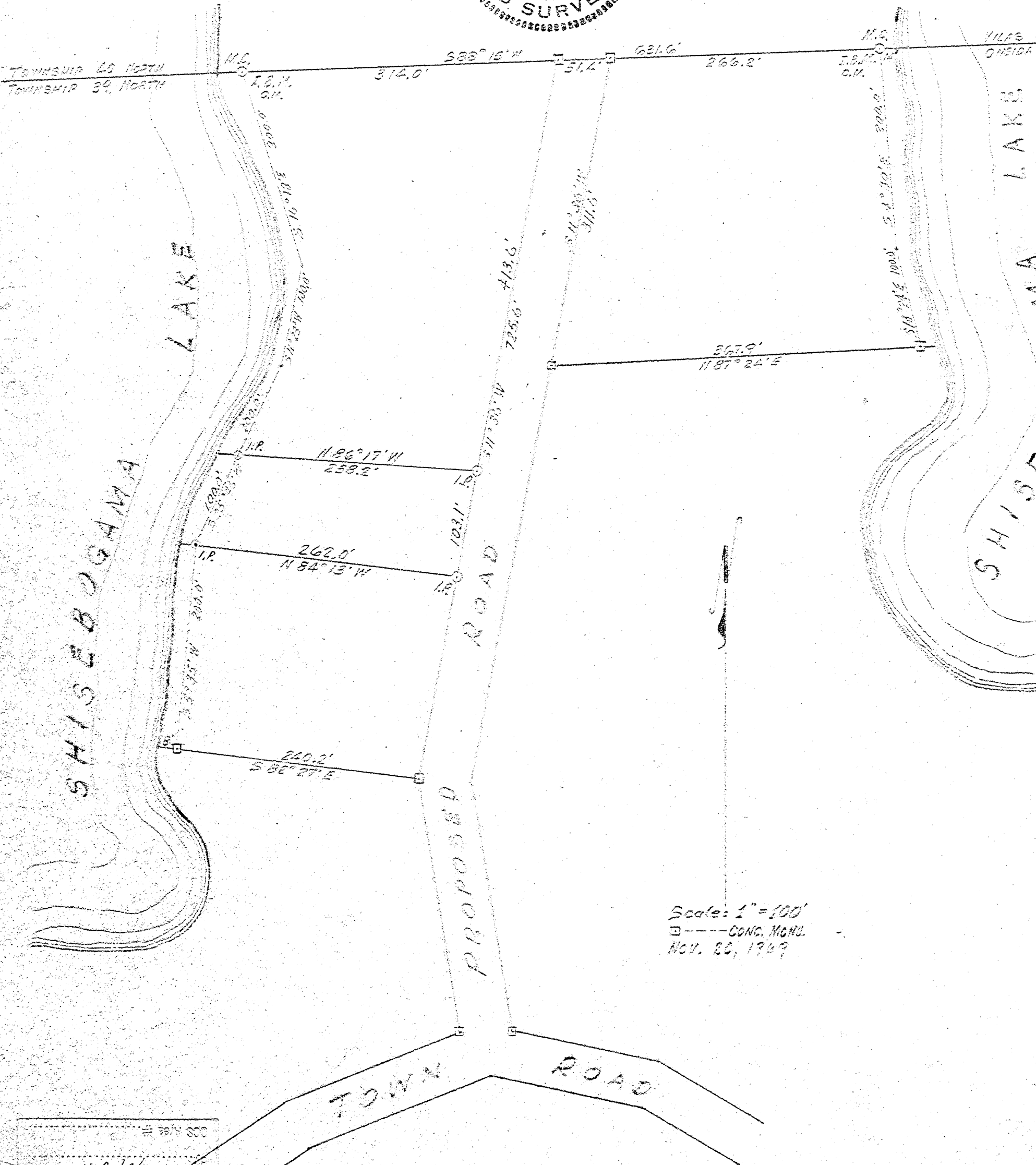
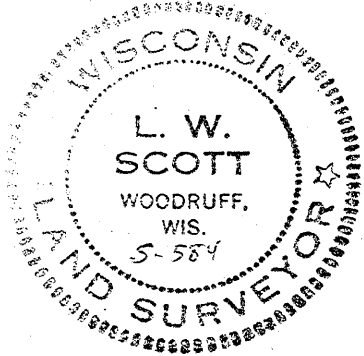


GOV'T. LOT 2  
SECTION 2, T39N-25E  
ONEIDA COUNTY, WIS.

*Lloyd Scott*  
SURVEYOR 5-584

RECEIVED & FILED  
Oneida County Surveyor's Office  
1949



Scale: 1" = 100'  
--- CONC. MON. ---  
Nov. 20, 1949

RECEIVED & FILED  
Oneida County Surveyor's Office  
Date: FEB. 10 1988  
MCH  
000 Area #