

A255

RECEIVED & FILED # 15-5-369
By: D.M. W. [Signature]
Date: 4/29/77
Oneida County Surveyor's Office

JERRY RIOPEL

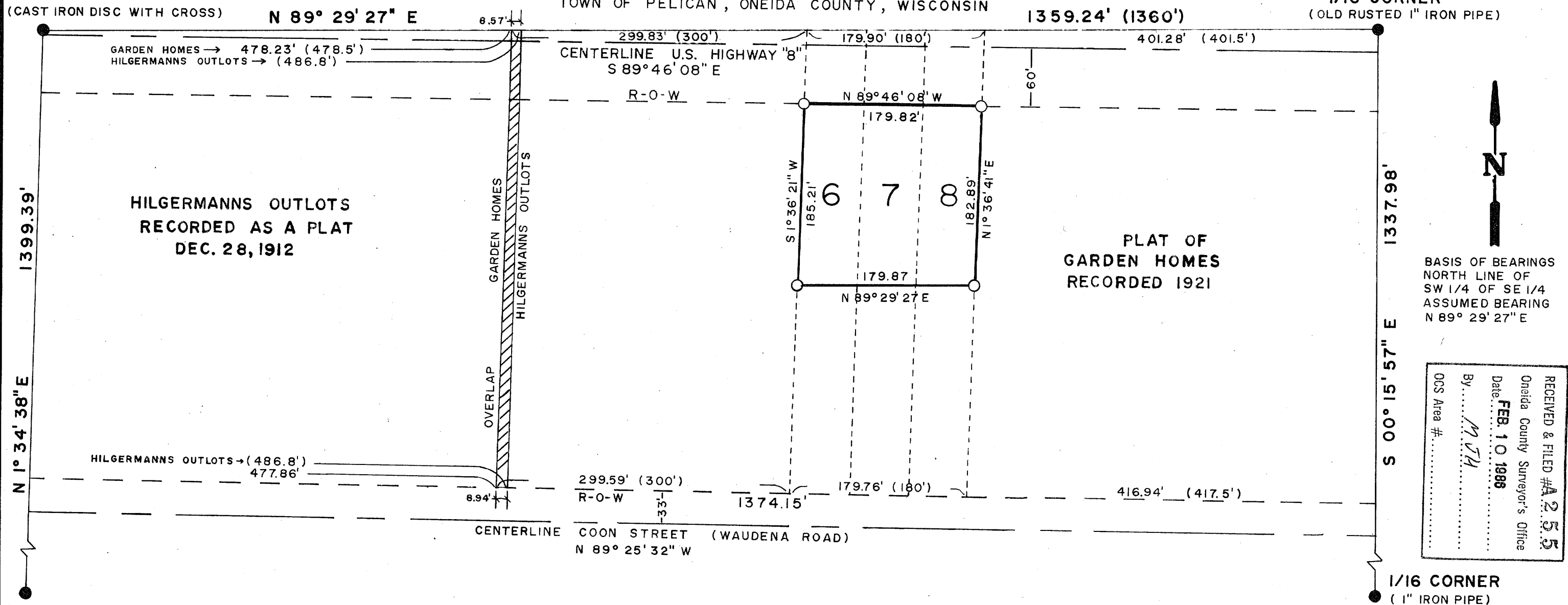
A MAP OF SURVEY FOR
THE NORTH 260 FEET
OF **LOTS 6, 7, & 8, PLAT OF GARDEN HOMES**
IN THE SW 1/4 OF THE SE 1/4, SECTION 5
TOWNSHIP 36 NORTH, RANGE 9 EAST
TOWN OF PELICAN, ONEIDA COUNTY, WISCONSIN

BT'S
R-O-W POST S86°W 7.20'
R-O-W POST S89°E 12.05'
CORNER OF BUILDING
N3°W 66.20'

BT'S
NAIL IN POWER POLE N 4°E 23.87'
CORNER OF CATCH BASIN N 43° W 25.00'
CORNER OF CATCH BASIN S 53° W 42.50'

1/16 CORNER

1/16 CORNER
(OLD RUSTED 1" IRON PIPE)



BASIS OF BEARINGS
NORTH LINE OF
SW 1/4 OF SE 1/4
ASSUMED BEARING
N 89° 29' 27" E

RECEIVED & FILED #A 2 5 5
Oneida County Surveyor's Office
Date: FEB. 10 1986
By: M. J. [Signature]
OCS Area #:

SOUTH 1/4 CORNER
(1 1/4" IRON PIPE 1.5' ABOVE GROUND)
BT'S
CEMETARY DRIVE 15' EAST
10" RED PINE S26°E 10'

LEGEND

- FOUND MONUMENT (DESCRIPTION OF MONUMENT)
- SET 1" X 24" IRON PIPE WEIGHING 1.68 LBS./LINEAR FOOT (RECORDED BEARINGS AND DISTANCES)

SCALE 1" = 100 FEET DR. BY SET DATE 4/29/77

I HEREBY CERTIFY THAT THIS SURVEY IS CORRECT TO THE BEST OF MY KNOWLEDGE AND BELIEF.

John B. Margitan
JOHN B. MARGITAN, REGISTERED LAND SURVEYOR, S-1017
DATE 5-4-77

RONALD F. EDWARDS & ASSOCIATES, LTD.
A. I. A.
ARCHITECTS ENGINEERS SURVEYORS LAND PLANNERS
ROUTE 2 BOX 100 WOODRUFF, WISCONSIN 54568 TELEPHONE AREA CODE 715 356-9416

DWG. NO. 10/77