

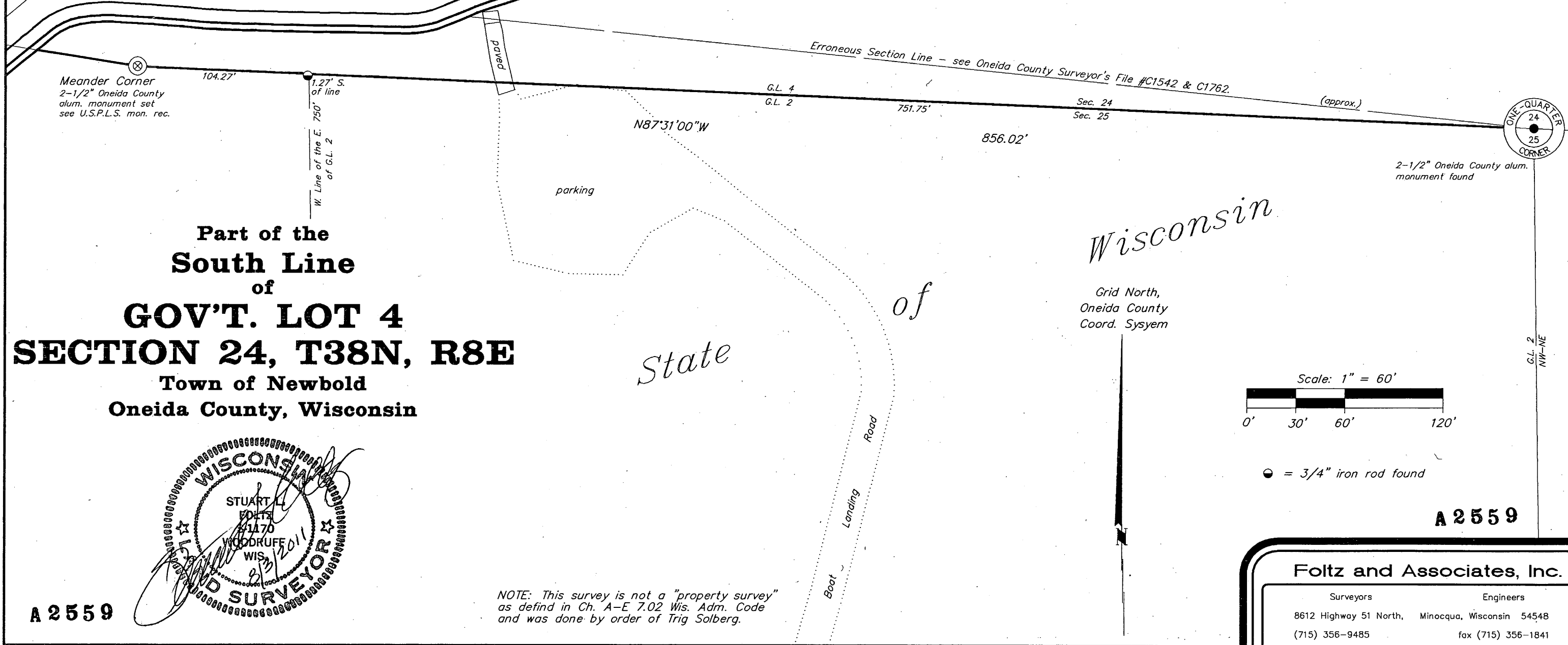
A 2559

Spider

Lake

T.A. Solberg

MAP # **A 2559**
 DATE FILED 8/25/11
 BY PH
 DESCRIPTION FILED.....
 ONEIDA CO. SURVEYOR'S OFFICE



Meander Corner
 2-1/2" Oneida County
 alum. monument set
 see U.S.P.L.S. mon. rec.

104.27'
 1.27' S.
 of line
 W. Line of the E. 750'
 of G.L. 2

G.L. 4
 G.L. 2

751.75'

Sec. 24
 Sec. 25

(approx.)



2-1/2" Oneida County alum.
 monument found

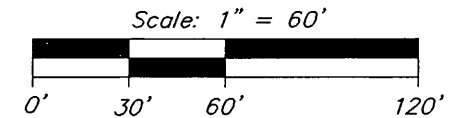
Part of the
South Line
 of
GOV'T. LOT 4
SECTION 24, T38N, R8E
 Town of Newbold
 Oneida County, Wisconsin

parking

State

Wisconsin

Grid North,
 Oneida County
 Coord. System



● = 3/4" iron rod found

A 2559

Foltz and Associates, Inc.

Surveyors Engineers
 8612 Highway 51 North, Minocqua, Wisconsin 54548
 (715) 356-9485 fax (715) 356-1841

C. Winkler 14-24-388

NOTE: This survey is not a "property survey"
 as defined in Ch. A-E 7.02 Wis. Adm. Code
 and was done by order of Trig Solberg.

A 2559

