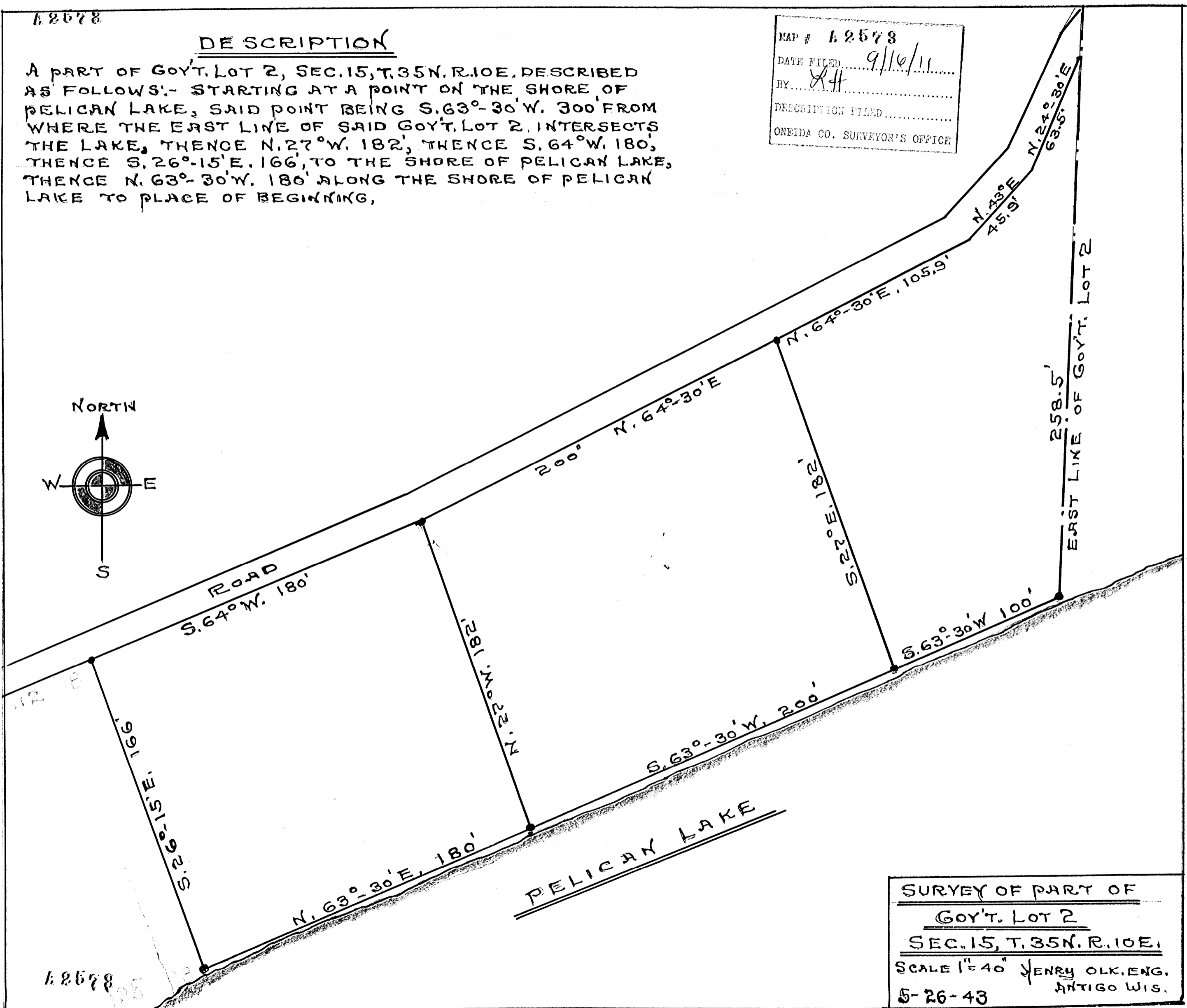
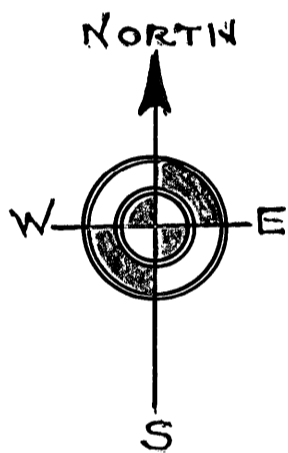


A 2578

DESCRIPTION

A PART OF GOV'T. LOT 2, SEC. 15, T. 35 N. R. 10 E. DESCRIBED AS FOLLOWS:- STARTING AT A POINT ON THE SHORE OF PELICAN LAKE, SAID POINT BEING S. 63°-30' W. 300' FROM WHERE THE EAST LINE OF SAID GOV'T. LOT 2 INTERSECTS THE LAKE, THENCE N. 27° W. 182', THENCE S. 64° W. 180', THENCE S. 26°-15' E. 166', TO THE SHORE OF PELICAN LAKE, THENCE N. 63°-30' W. 180' ALONG THE SHORE OF PELICAN LAKE TO PLACE OF BEGINNING,

MAP # A 2578  
DATE FILED 9/16/11  
BY R.H.  
DESCRIPTION FILED  
ONEIDA CO. SURVEYOR'S OFFICE



SURVEY OF PART OF  
GOV'T. LOT 2  
SEC. 15, T. 35 N. R. 10 E.  
SCALE 1"=40' HENRY OLK. ENG.  
ANTIGO WIS.  
5-26-43

A 2578

A 2578