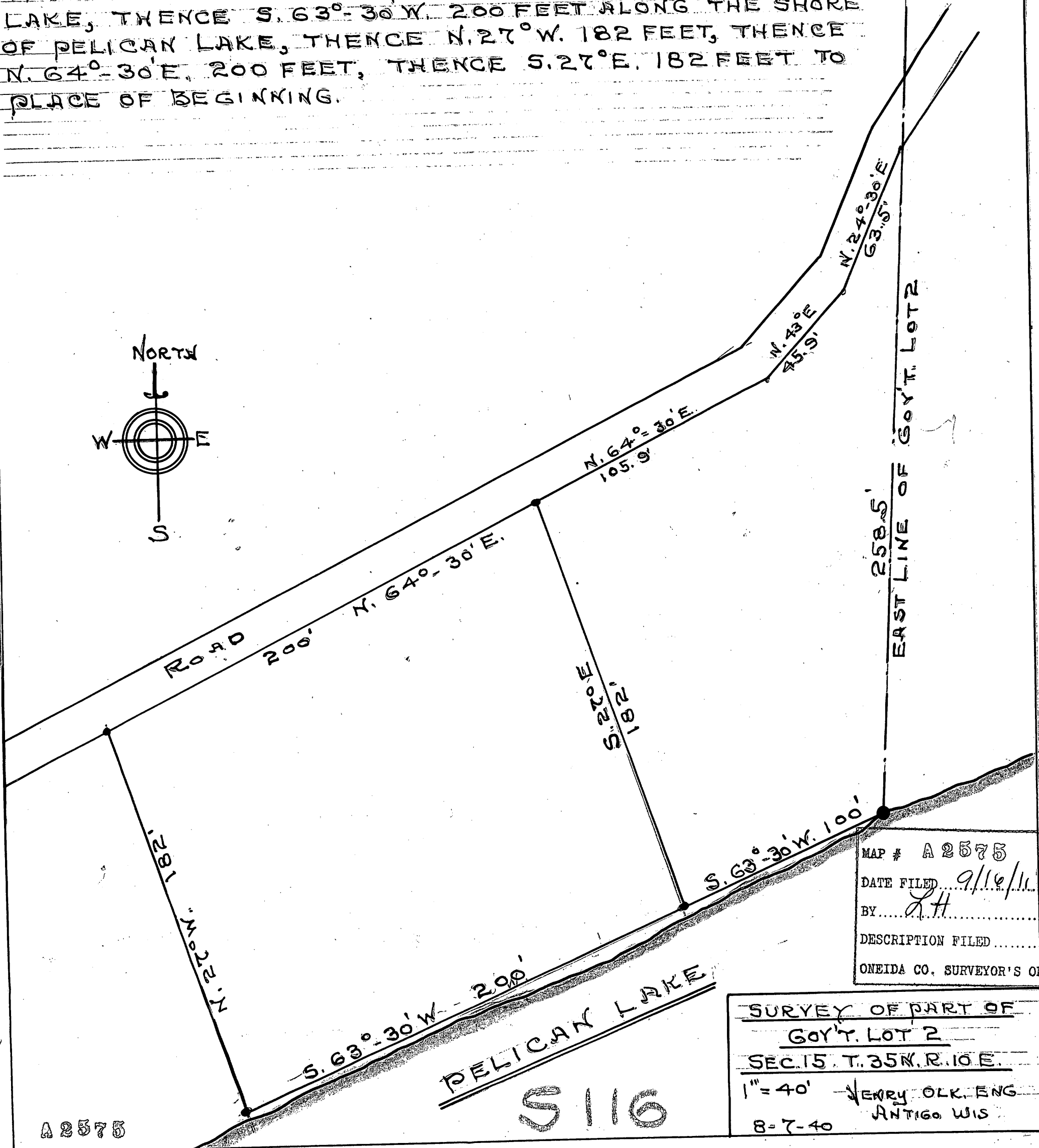
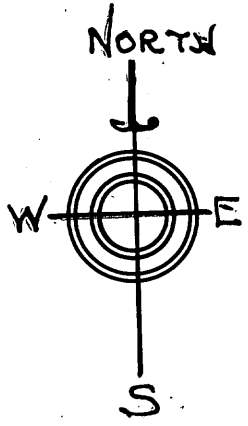


DESCRIPTION

A PART OF GOVT. LOT 2 SECTION 15, T.35N. R.10.E. DESCRIBED AS FOLLOWS:- STARTING AT A POINT ON THE SHORE OF PELICAN LAKE, SAID POINT BEING S. 63°-30' W. 100 FEET FROM WHERE THE EAST LINE OF SAID GOVT. LOT 2 INTERSECTS THE LAKE, THENCE S. 63°-30' W. 200 FEET ALONG THE SHORE OF PELICAN LAKE, THENCE N. 27° W. 182 FEET, THENCE N. 64°-30' E. 200 FEET, THENCE S. 27° E. 182 FEET TO PLACE OF BEGINNING.



MAP # A2575
 DATE FILED 9/16/11
 BY L.H.
 DESCRIPTION FILED
 ONEIDA CO. SURVEYOR'S OFFICE

SURVEY OF PART OF
 GOVT. LOT 2
 SEC. 15, T. 35N., R. 10E.
 1" = 40' HENRY OLK. ENG.
 8-7-40 ANTIGO WIS.

S 116