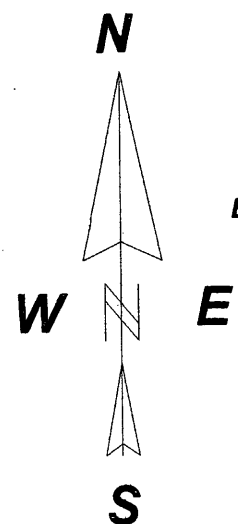
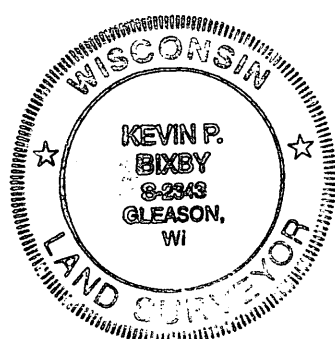
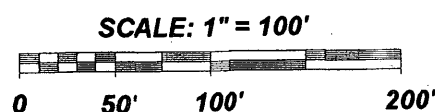


SURVEY OF LOT 5, ONEIDA COUNTY C.S.M. V.15, PG. 3456, LOCATED IN GOV'T. LOT 2, SECTION 14, & PART OF LOT 1 OF THE RE-PLAT OF BLOCK 2 OF ALBURMI SHORES SHORES AND THE DISCONTINUED HWY, BEING PART OF GOV'T. LOT 7, SECTION 11, T36N, R09E, TOWN OF PELICAN, ONEIDA COUNTY, WISCONSIN



BEARINGS BASED ON ONEIDA COUNTY
CSM V.15 PG. 3456

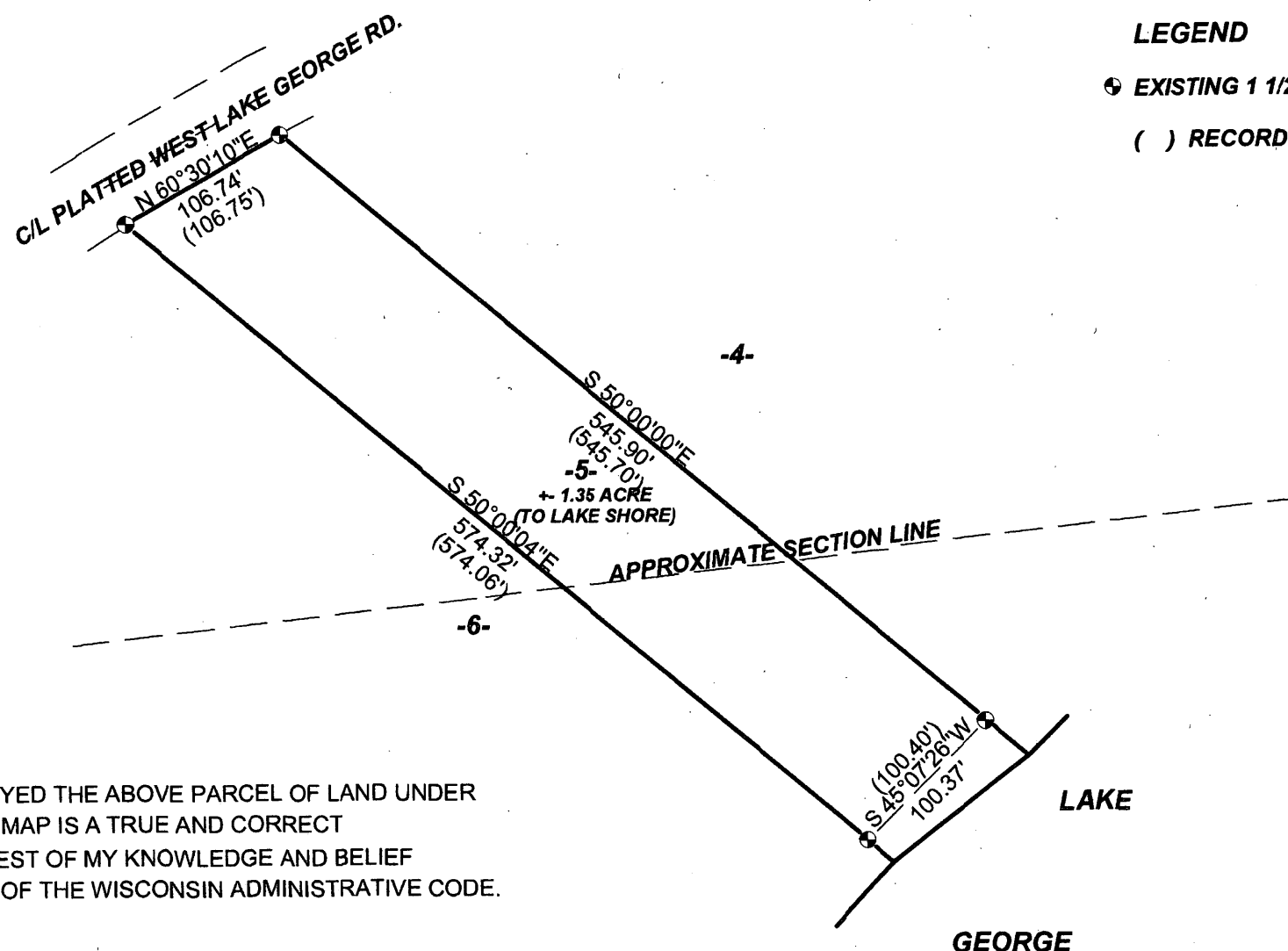
BIXBY LAND SURVEYING INC.
P.O. BOX 1532
RHINELANDER, WI. 54501
bixbyland@frontiernet.net
O:715-362-5263



I, KEVIN P. BIXBY, HEREBY CERTIFY THAT I HAVE SURVEYED THE ABOVE PARCEL OF LAND UNDER THE DIRECTION OF KARLA ROTH AND THAT THE ABOVE MAP IS A TRUE AND CORRECT REPRESENTATION OF THE LANDS SURVEYED TO THE BEST OF MY KNOWLEDGE AND BELIEF THAT I HAVE COMPLIED WITH THE PROVISIONS OF AE 7 OF THE WISCONSIN ADMINISTRATIVE CODE.

Kevin P. Bixby

KEVIN P. BIXBY R.L.S. 2343 5/9/12 DATE



LEGEND
⊙ EXISTING 1 1/2" IRON PIPE I.D.
() RECORDED AS

MAP # A 2642
DATE FILED 6-25-12
BY <i>JB</i>
DESCRIPTION FILED
ONEIDA CO. SURVEYOR'S OFFICE

DWG # 575