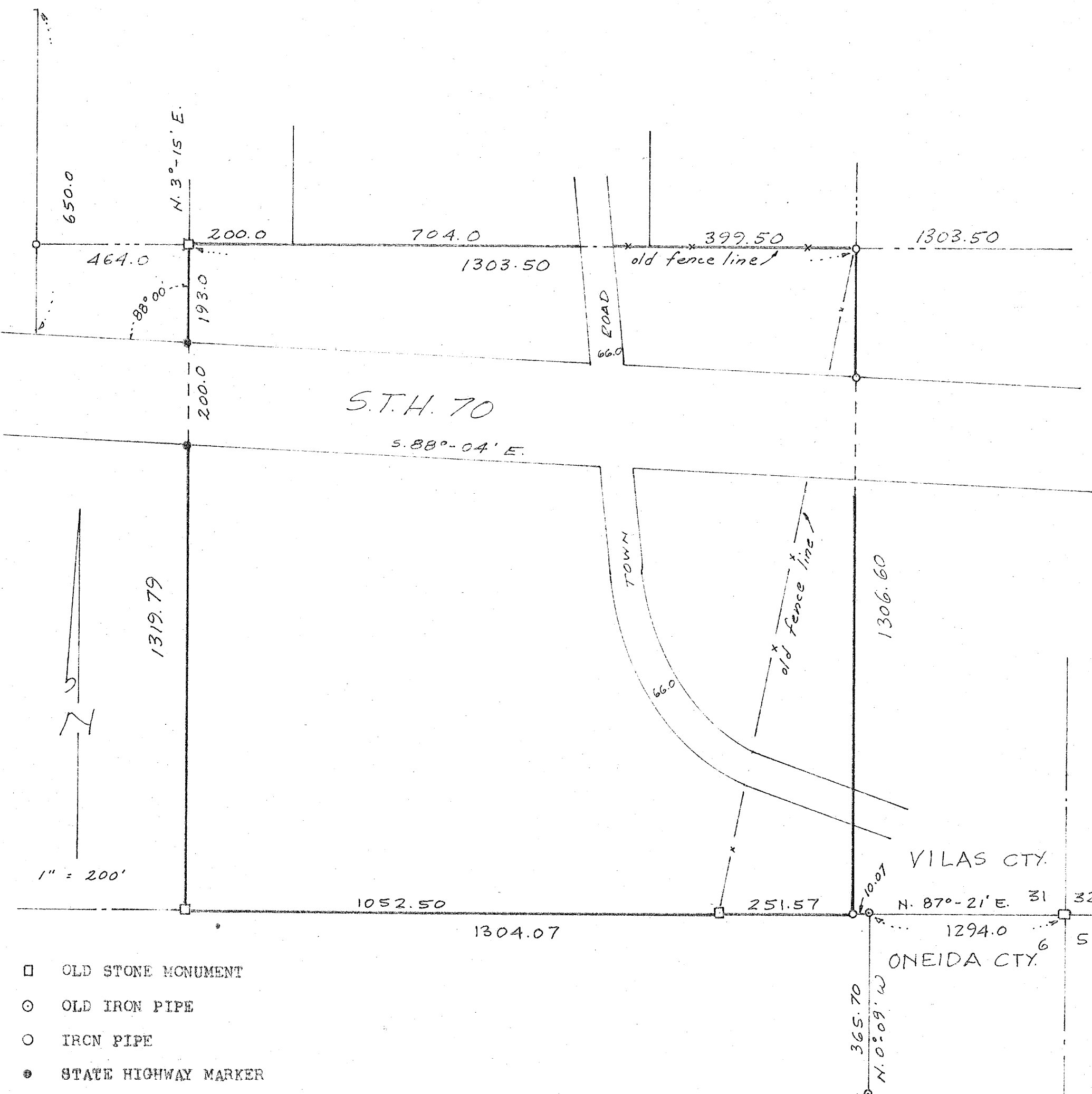
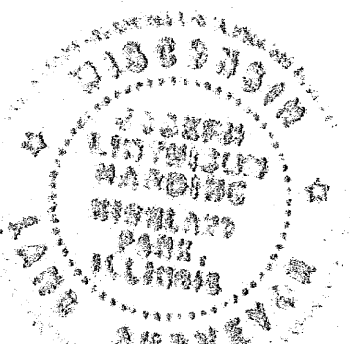


RECEIVED & FILED # **A2.7.3**
 Oneida County Surveyor's Office
 Date **FEB 10 1986**
 By *M JH*
 OCS Area #.....



SOUTH WEST 1/4 OF THE SOUTHEAST 1/4
 SECTION 31, T 40N, R 9 E.

Joseph L. Harding
 WISCONSIN REGISTERED LAND SURVEYOR



1972

Joseph L. Harding

RECEIVED & FILED # **B40.5**
 Oneida County Surveyor's Office
 Date *June 79*
 By *D. M. ...*