

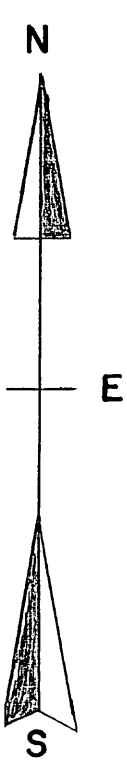
MAP # A2739

DATE FILED 5/29/13

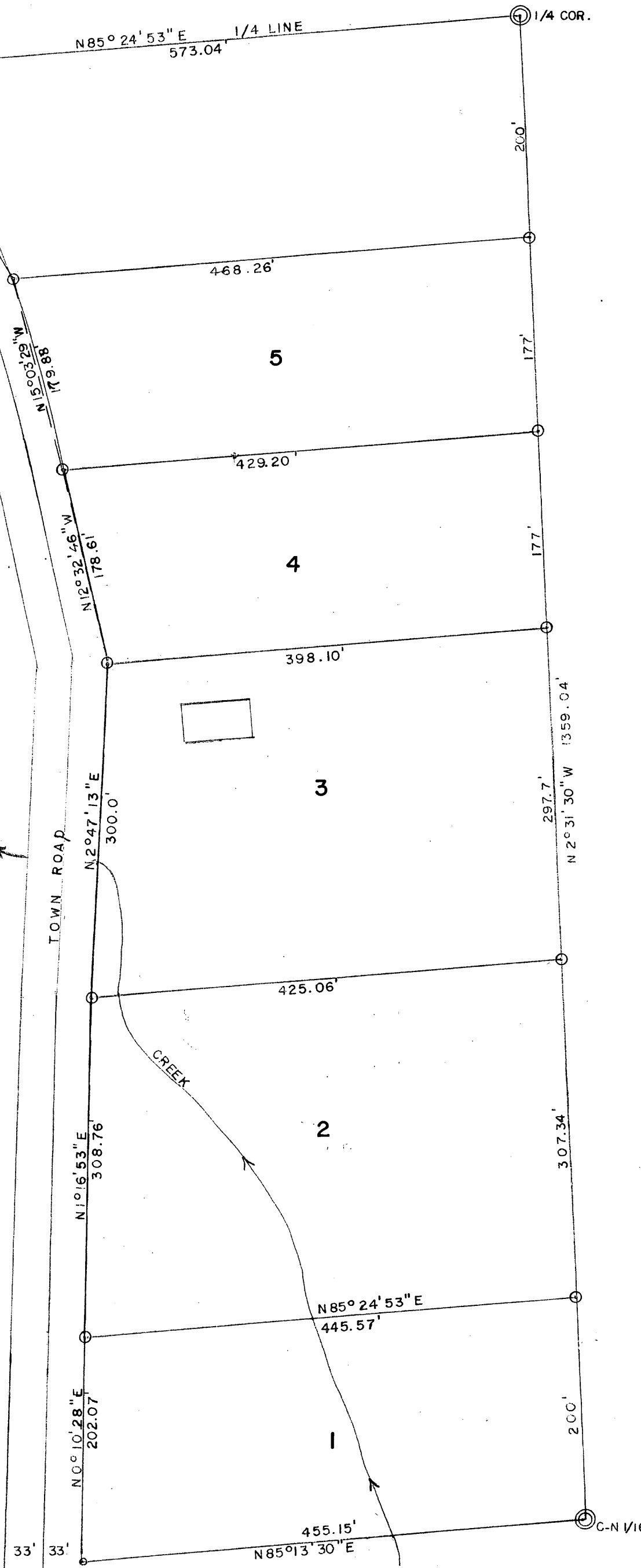
BY JB

DESCRIPTION FILED

ONEIDA CO. SURVEYOR'S OFFICE



PART OF NE1/4 NW1/4 SEC.36  
T39N, R9E, ONEIDA CO. WIS.  
FOR  
BRENT LORBETSKI



SCALE 1" = 100'  
○ IRON PIPE  
⊙ IRON PIPE FOUND  
⊙ SUBDIVISIONAL MONUMENT  
9-12-73  
N. LOFTUS S 0259  
*Norman Loftus*