

A 2920

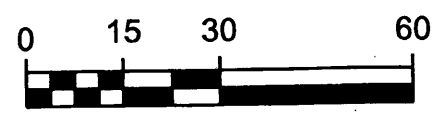
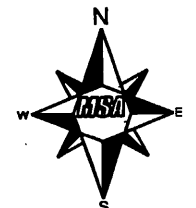
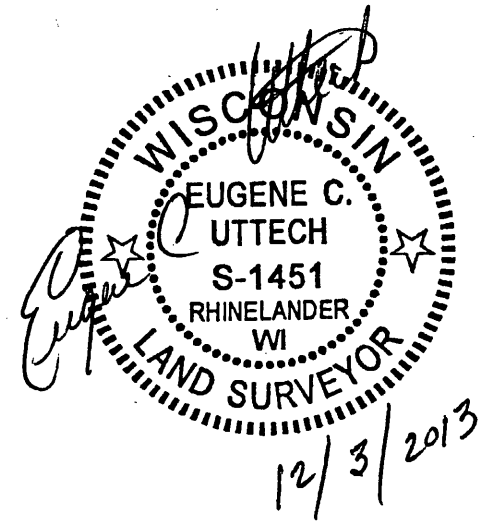
A 2920

ELEVATION MAP

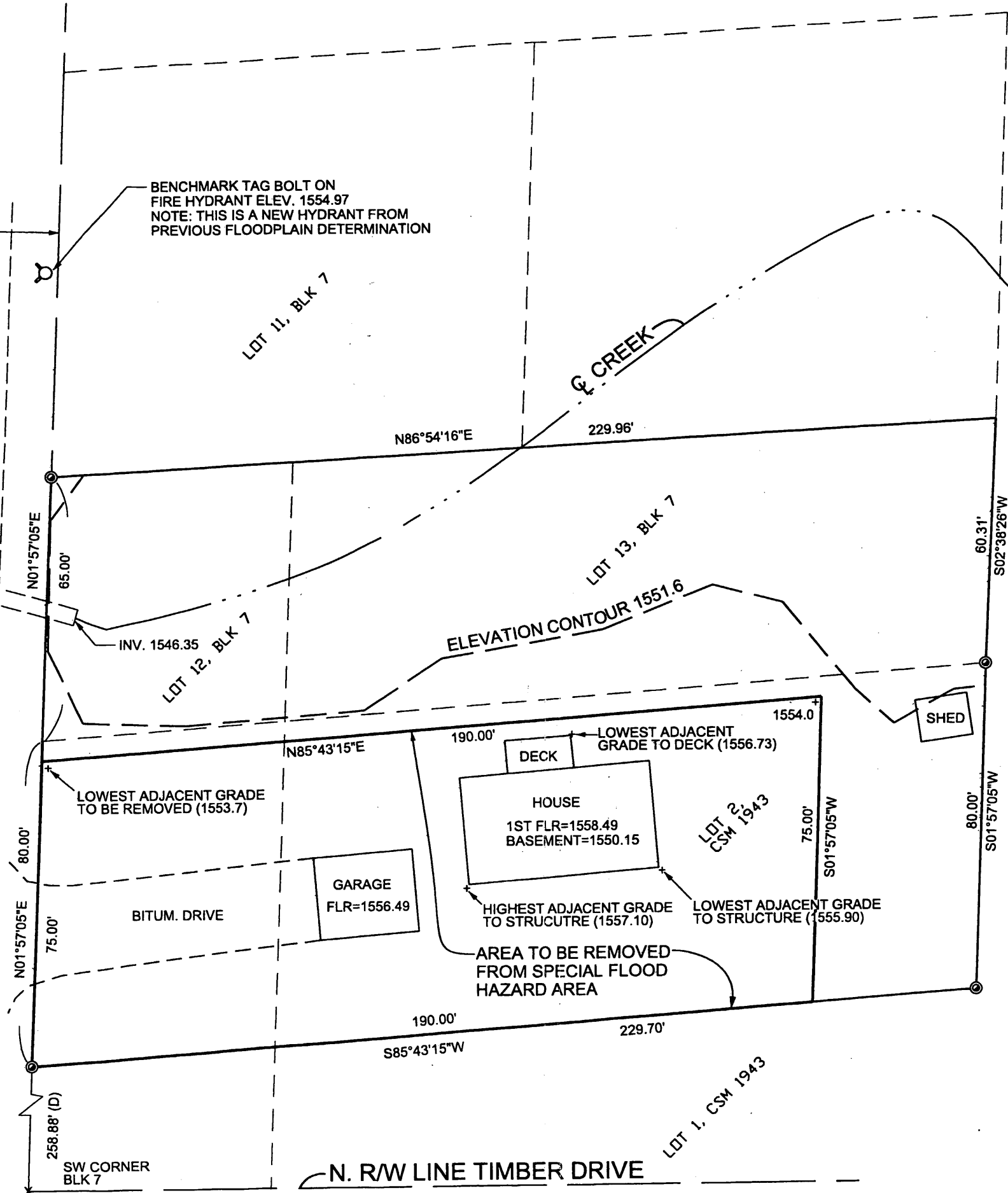
LANDS BEING PART OF LOT 12 AND LOT 13, BLOCK 7, OF WOODLAND DRIVE ASSESSOR'S PLAT IN SECTION 32, T.37N., R.9E., CITY OF RHINELANDER, ONEIDA COUNTY, WISCONSIN

FLOOD ELEVATION: 1551.6 NGVD29
SEE CASE NO. 04.05.1546A,
DATED: FEBRUARY 4, 2004

BENCHMARK TAG BOLT ON FIRE HYDRANT ELEV. 1554.97
NOTE: THIS IS A NEW HYDRANT FROM PREVIOUS FLOODPLAIN DETERMINATION



MAP # **A 2920**
DATE FILED 8-25-14
BY JL
DESCRIPTION FILED
ONEIDA CO. SURVEYOR'S OFFICE



ELEVATION MAP	
OWNER: DAVID & SUSAN BROWNELL	
PARCEL ADDRESS: 844 WOODLAND DR RHINELANDER, WI	
MSA TRANSPORTATION • MUNICIPAL DEVELOPMENT • ENVIRONMENTAL 1835 N. Stevens St. Rhinelander, WI 54501 715-382-3244 1-800-844-7854 Fax: 715-382-4118 Web Address: www.msa-ps.com	
DRAWN BY CAR	DATE 11/13
CHECKED BY ECU	SCALE AS SHOWN
SHEET NO. 1 of 2	FILE NO. 15834000

A 2920