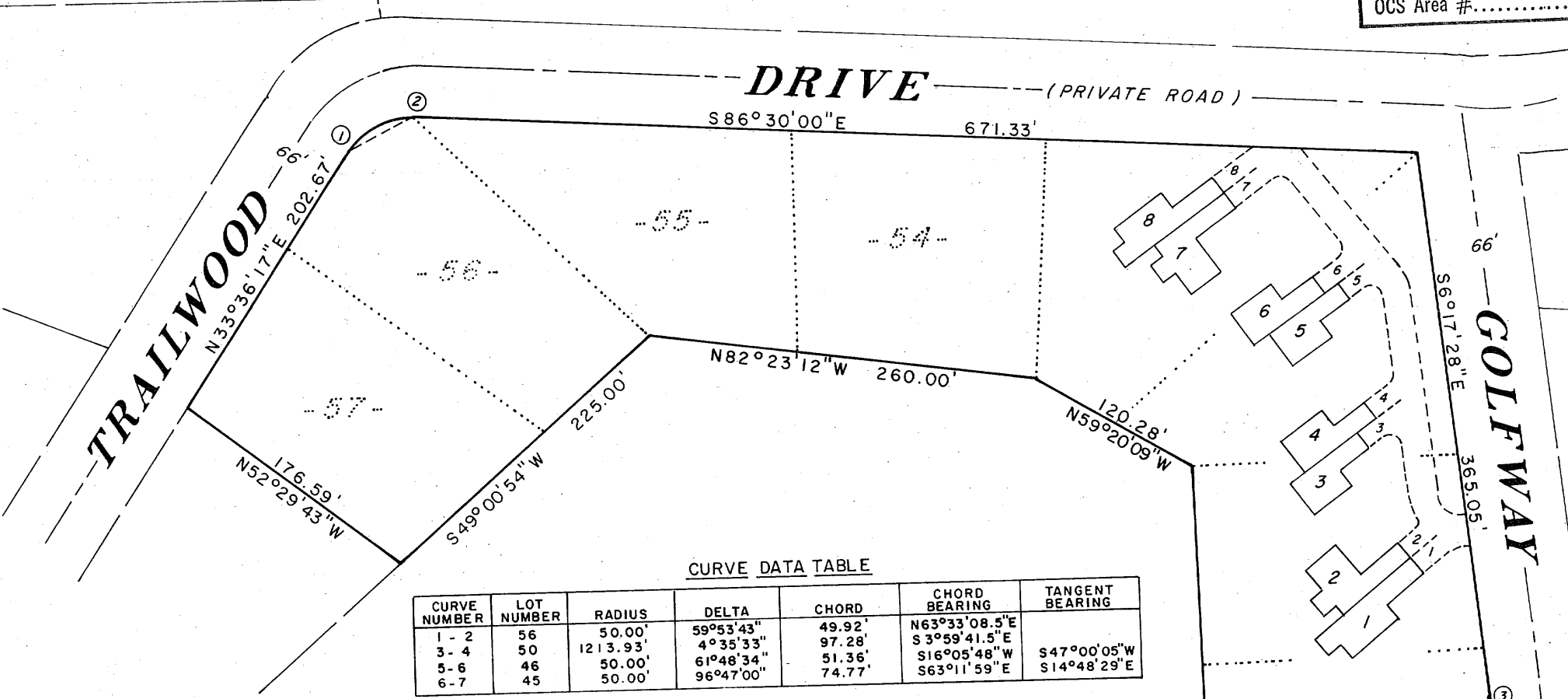
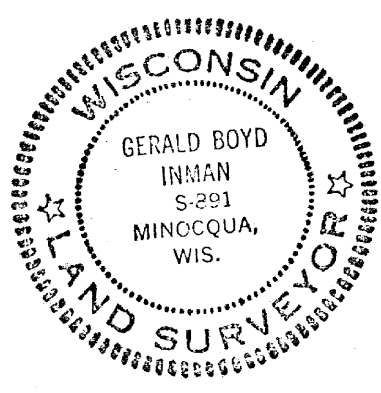


RECEIVED & FILED #A.2.9
 Oneida County Surveyor's Office
 Date **FEB. 10 1988**
 By *MTH*
 OCS Area #.....



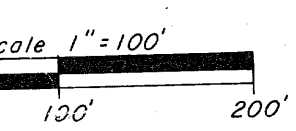
TIMBER RIDGE CONDOMINIUM
 being
Lots 45 thru 57
 of the Plat of
TIMBER RIDGE
 in the
SE 1/4 of the NW 1/4
SECTION 33, T39N, R6E
 Minocqua Township
 Oneida County, Wisconsin



Gerald B. Inman
 Registered Land Surveyor S-891

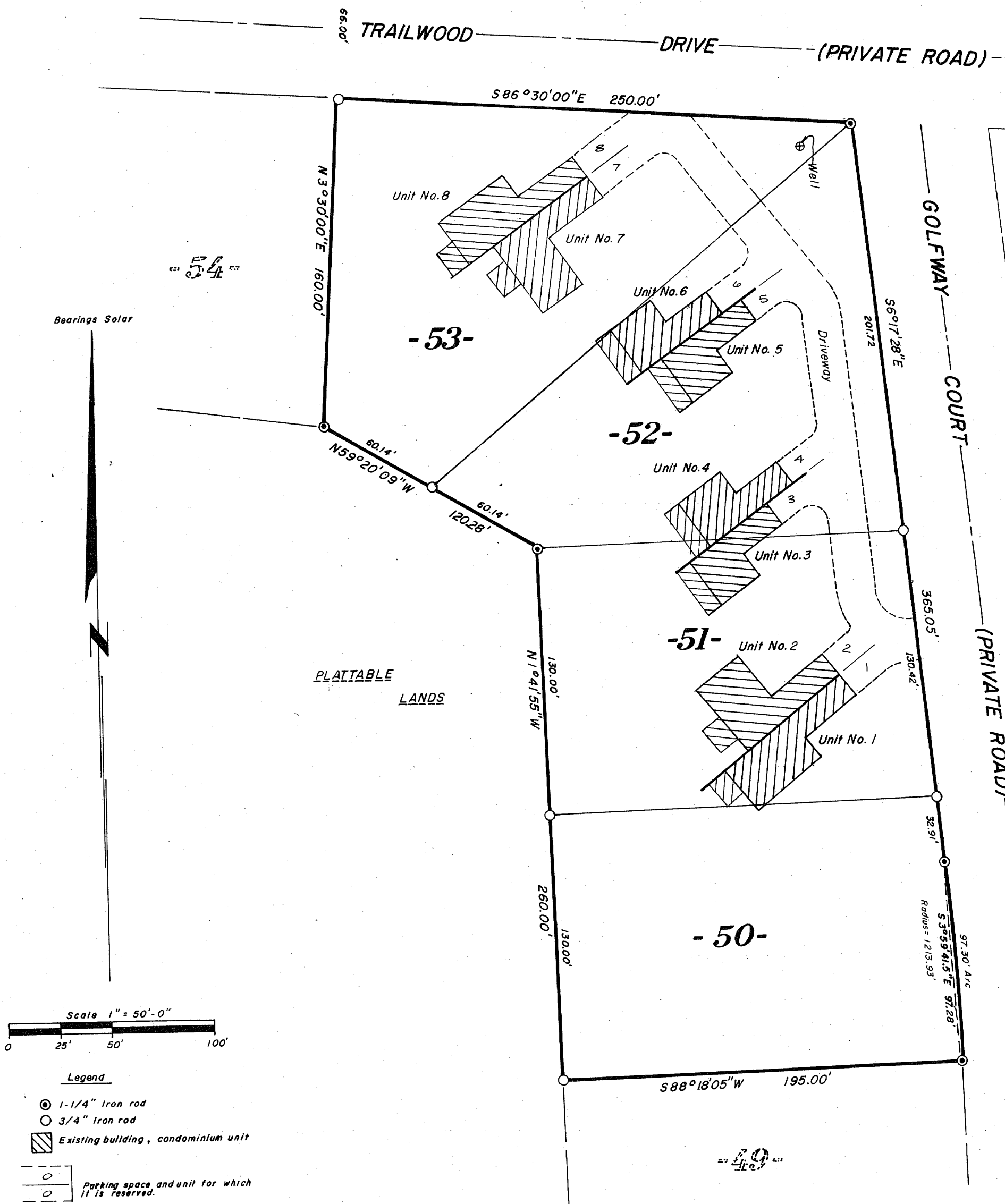
Date 6/25/79

I hereby certify that this plat is a correct representation of the condominium described and the identification of each unit, and the common elements, diagrammatic floor plans of each building, its approximate dimensions, floor area and the location of each unit in it, can be determined from the plat consisting of sheets 1 through 8, which sheets are attached hereto and made a part hereof.



= Condominium unit and its designated parking space.

RECEIVED &
 Oneida County



Phase I
TIMBER RIDGE CONDOMINIUM

"EXHIBIT B"

A297

RECEIVED & FILED
 Oneida County Surveyor's Office
 Date 1/2/03