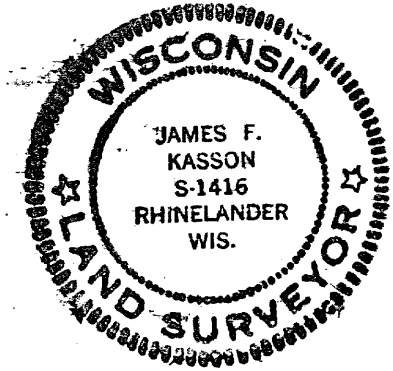
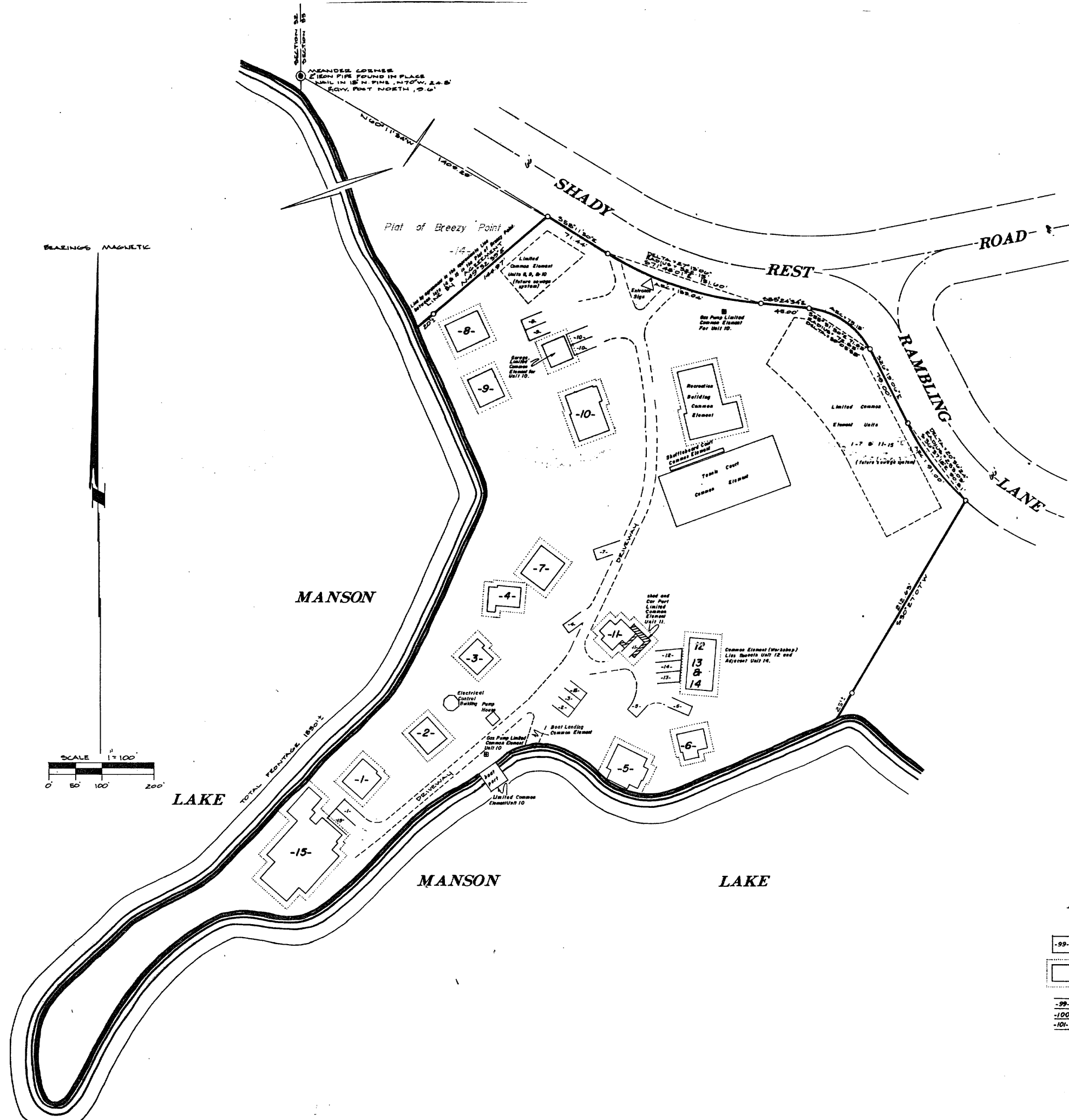


4298
 RECEIVED & FILED # A. 2. 98
 Oneida County Surveyor's Office
 Date FEB. 10. 1986
 By M. J. H.
 OCS Area #



CONDOMINIUM PLAT
 of
"SHADY REST CONDOMINIUMS"
 being part of the plat of
BREEZY POINT
 and other lands in
GOV'T LOT 2
SECTION 33, T36N, R7E.
 Woodboro Township
 Oneida County, Wi.

James F. Kasson
 REGISTERED LAND SURVEYOR - WIS.
 2/28/79

I HEREBY CERTIFY THAT THE ABOVE PLAT IS A CORRECT REPRESENTATION OF THE CONDOMINIUM DESCRIBED, AND THE IDENTIFICATION OF EACH UNIT, AND THE COMMON ELEMENTS CAN BE DETERMINED FROM THE ABOVE PLAT, DIAGRAMMATIC FLOOR PLANS OF EACH BUILDING, ITS APPROXIMATE DIMENSIONS, FLOOR AREA, AND THE LOCATION OF EACH UNIT IN IT. HAVE BEEN PROVIDED ON SEPARATE SHEETS, SAID SHEETS BEING NUMBERED 1 THROUGH 10, WHICH SHEETS ARE ATTACHED HERETO, AND MADE A PART HEREOF.

INMAN, FOLTZ, AND ASSOCIATES, INC.

0 = 1" = 30' IRON PIPE SET.

- 99- CONDOMINIUM AND ITS UNIT NUMBER
- AREA AROUND EACH UNIT RESERVED FOR BUILDING MAINTENANCE
- 99- PARKING SPACE (Number indicates for which unit space is reserved)
- 100-
- 101-

ALL UNITS SHOWN HEREON ARE UNNAMED.

RECEIVED & FILED # B4087
 Oneida County Surveyor's Office
 Date 19 March 88

A298