

WETLAND BOUNDARY MAP

ON BEHALF OF NATIVITY OF OUR LORD

FIGURE 5

LANDS LOCATED IN:
THE SW 1/4 OF THE NE 1/4,
SECTION 32, T. 37 N., R. 8 E.
CITY OF RHINELANDER, ONEIDA COUNTY, WI

WETLANDS DELINEATED

Kenneth S. Gradall 1/24/07
Kenneth S. Gradall, P.G., P.H. Dated

On December 12, 2006, the wetland delineation was field verified, and the updated wetland boundary is as shown on this map.

Michael F. O'Keefe 1/29/2007
Mr. Mike O'Keefe Dated
US Army Corps of Engineers

On December 12, 2006, the wetland delineation was field verified, and the updated wetland boundary is as shown on this map.

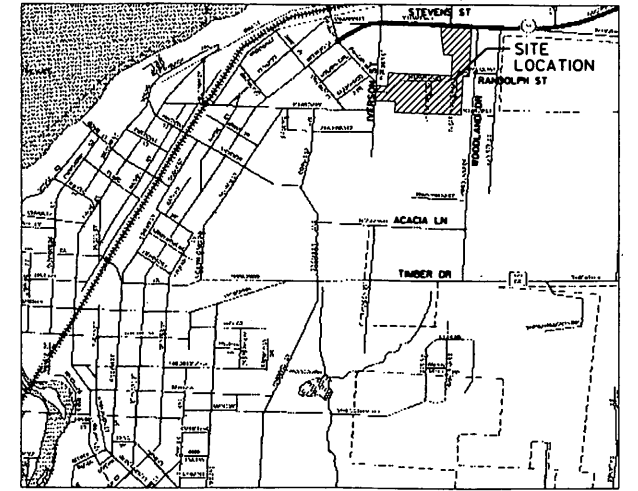
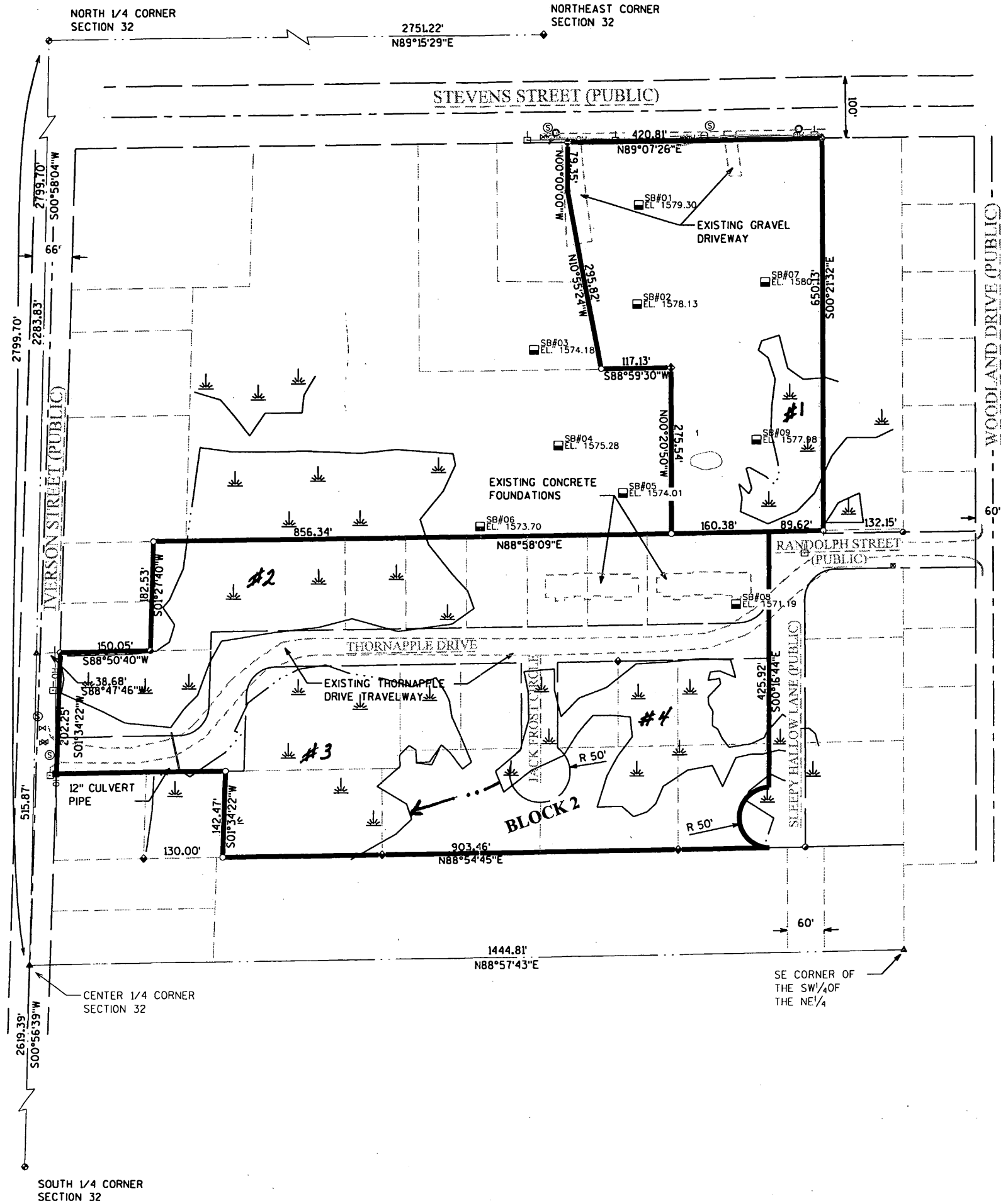
Eugene C. Uttech 1.23.07
Eugene C. Uttech, R.L.S. S-1451 Dated



MAP # **A3010**
DATE FILED **4-9-15**
BY **JB**
DESCRIPTION FILED
ONEIDA CO. SURVEYOR'S OFFICE



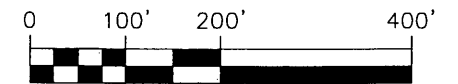
TRANSPORTATION • MUNICIPAL
DEVELOPMENT • ENVIRONMENTAL
1835 N. Stevens St. Rhinelander, WI 54501
715-362-3244 1-800-844-7854 Fax: 715-362-4116
© MSA PROFESSIONAL SERVICES



RHINELANDER
VICINITY MAP
NOT TO SCALE



BEARINGS REFERENCED TO THE
ONEIDA COUNTY COORDINATE SYSTEM



LEGEND & SYMBOLS

- 3/4" X 24" REBAR, SET
- 1" IRON PIPE, FOUND
- ◆ 1/4" IRON PIPE, FOUND
- ◇ 1/2" IRON PIPE, FOUND
- ⊙ 2" IRON PIPE, FOUND
- ▲ PK NAIL, FOUND
- ▲ COMPUTED POSITION
- ⊙ MANHOLE
- ⊗ WATER VALVE
- ⊕ HYDRANT
- ⊕ POWER POLE
- ⊕ CURBSTOP
- ⊕ WET AREA
- ⊕ ELECTRIC TRANSFORMER
- ⊕ TELEPHONE PEDESTAL
- CATCH BASIN
- ◆ COUNTY ALUM. MONUMENT, FOUND
- OH— OVERHEAD ELECTRIC
- G— GAS
- T— TELEPHONE
- SB#XX SOIL BORING