

PELICAN LAKE

PART OF
GOV'T. LOT 1, SEC. 3, T. 35N., R. 11E.

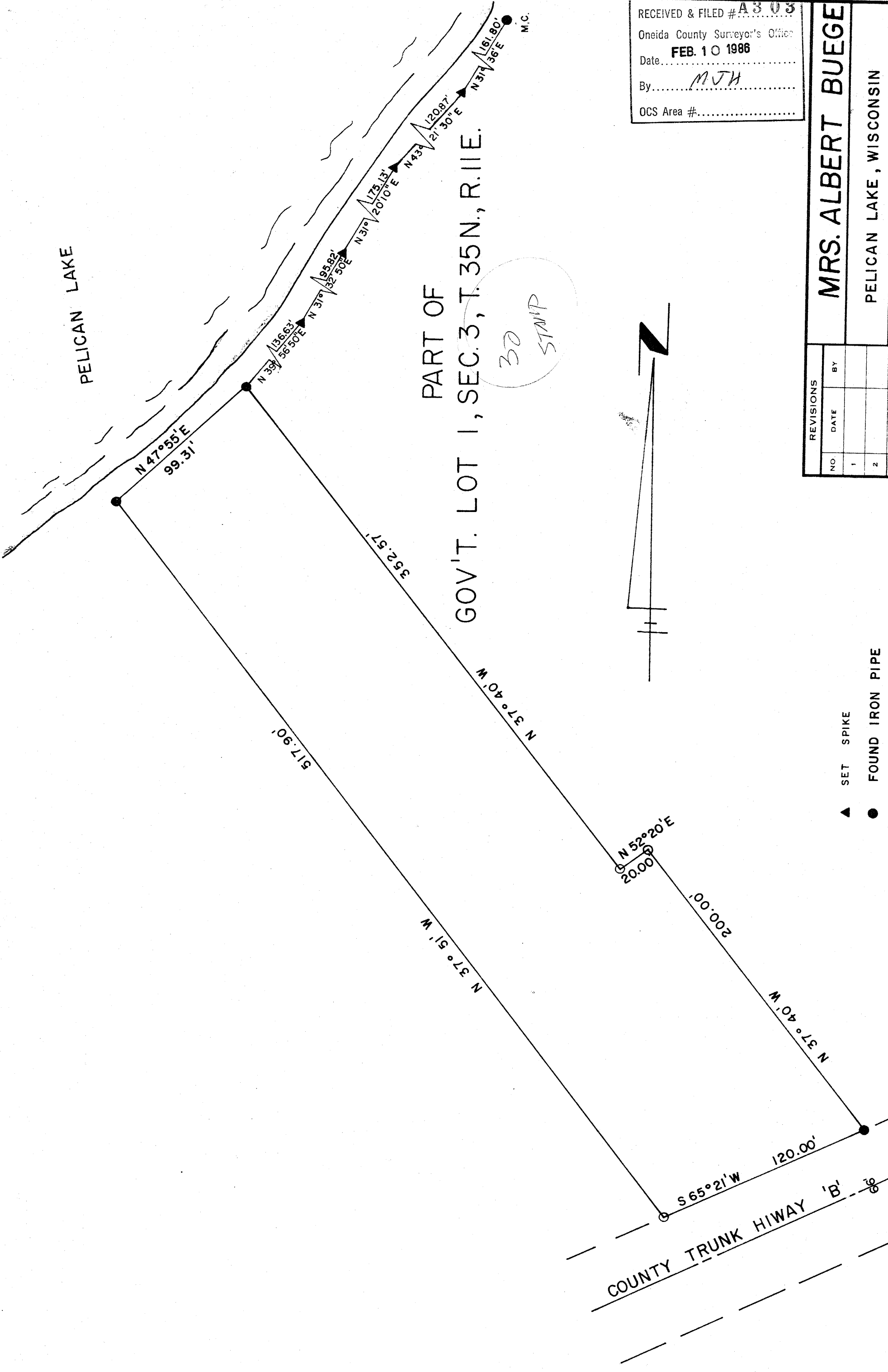
30
STAMP

RECEIVED & FILED # **A303**
Oneida County Surveyor's Office
Date **FEB. 10 1986**
By *MJH*
OCS Area #.....

REVISIONS		
NO.	DATE	BY
1		
2		

MRS. ALBERT BUEGE

PELICAN LAKE, WISCONSIN



- ▲ SET SPIKE
- FOUND IRON PIPE

A303