

WEST 1/2 SECTION 28

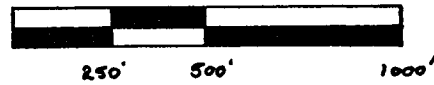
Township 37 North Range 11 East
Town of Piehl, Oneida County
Wisconsin

BEARINGS MAGNETIC

LEGEND

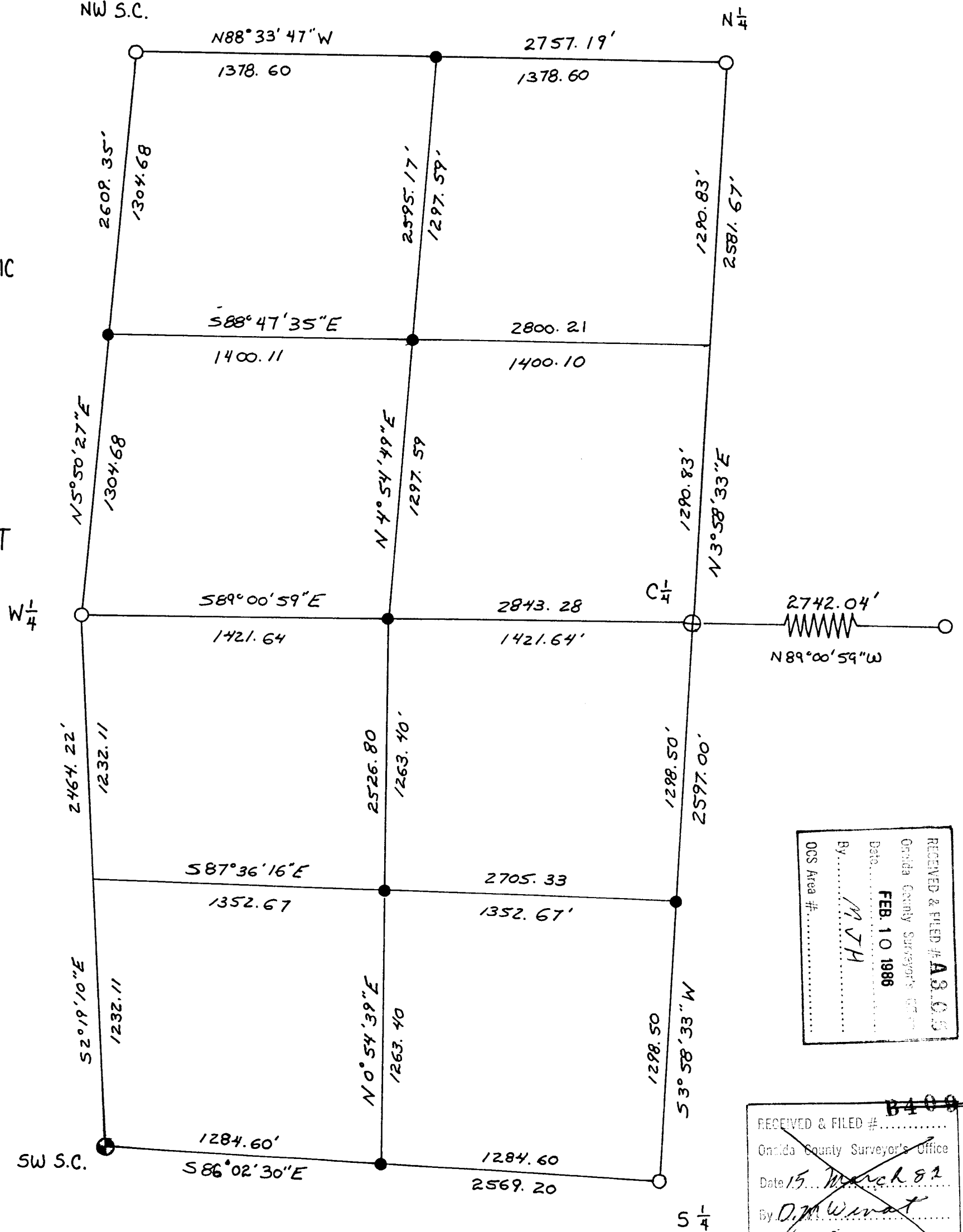
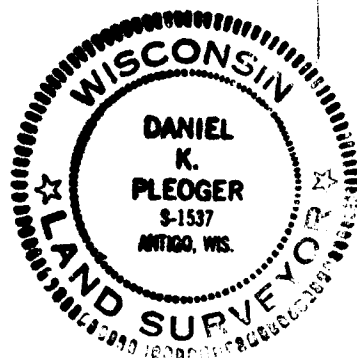
- FOUND 2" IRON PIPE WITH BRASS CAP
- SET 1 1/2" IRON PIPE WITH BRASS CAP
- ⊕ SET 2 1/2" ALUMINUM MONUMENT
- ⊙ REPLACED 2" I.P. WITH 2 1/2" ALUMINUM MONUMENT

SCALE: 1" = 500'



I hereby certify that I have surveyed the above parcel of land under the direction of Consolidated Papers, Inc. and that the above map is a true and correct representation of the lands surveyed to the best of my knowledge and belief.

Daniel K. Pleoger
Daniel K. Pleoger 2/2/81



RECEIVED & FILED # **A 8 0 5**
Oneida County Surveyor's Office
Date: **FEB. 10 1986**
By: **MTH**
OCS Area #.....

RECEIVED & FILED # **B 4 0 8 5**
Oneida County Surveyor's Office
Date: **15 March 82**
By: **D.M. W. Wat**
3,4,5,6,11,12,13,14-