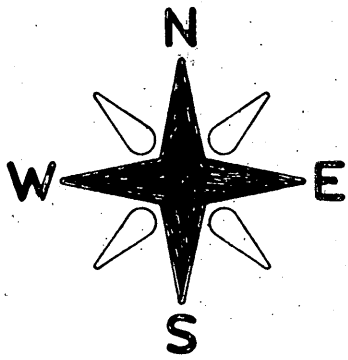


MAP # **A 9067**
 DATE FILED 8-31-15
 BY JB
 DESCRIPTION FILED.....
 ONEIDA CO. SURVEYOR'S OFFICE



SW 1/4 - NW 1/4
 NW 1/4 - SW 1/4

**LOCATED IN THE SW 1/4 - NW 1/4,
 NW 1/4 - SW 1/4, SW 1/4 - SW 1/4,
 AND THE SE 1/4 - SW 1/4, SECTION 10,
 T36N, R9E, TOWN OF PELICAN,
 ONEIDA COUNTY, WISCONSIN**

BEARINGS REFERENCED TO THE SOUTH LINE OF SECTION 10
 ASSUMED TO BEAR S 88°17'58" W

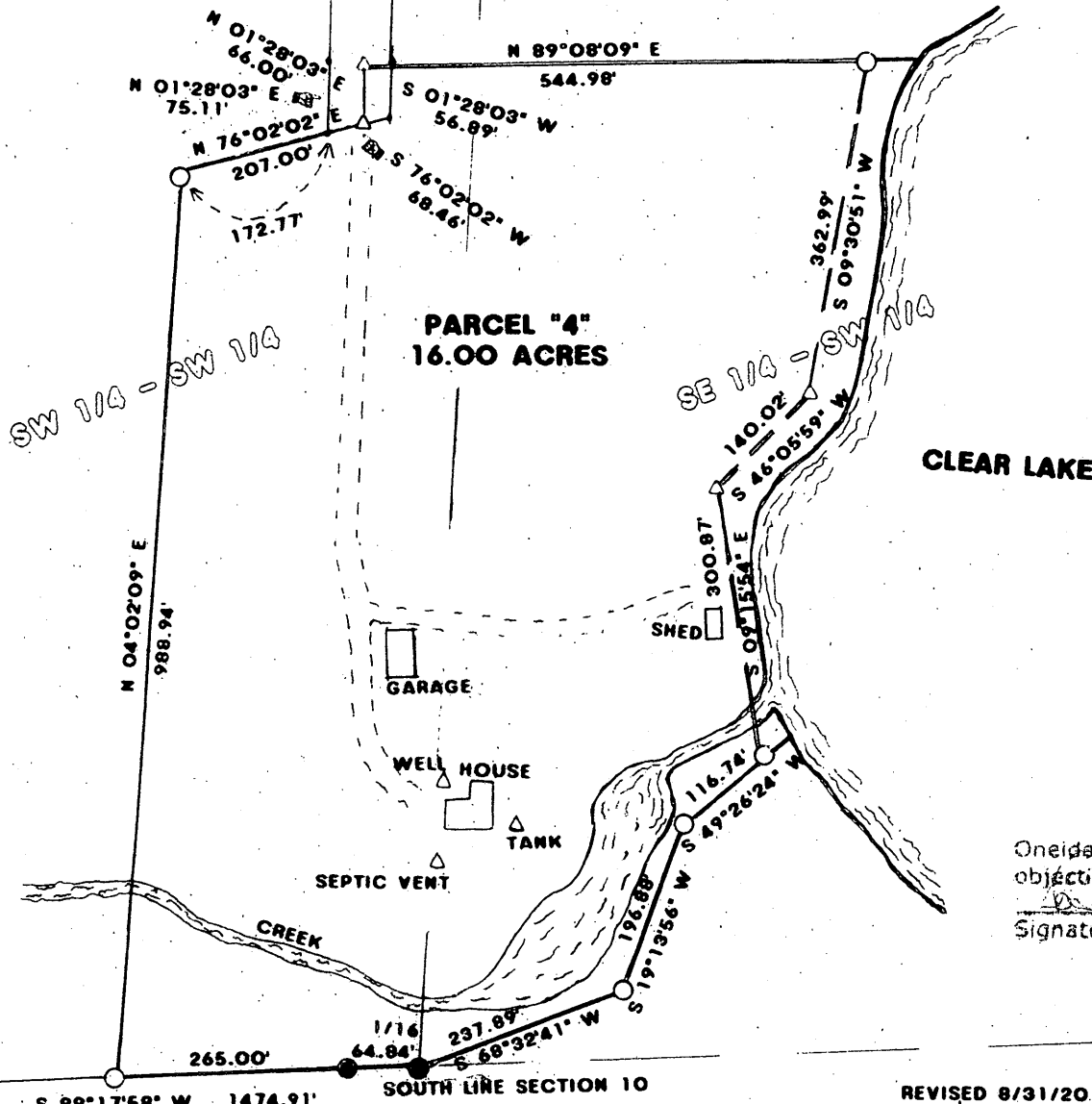
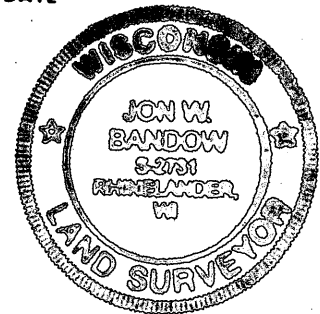
LEGEND:

- SET 1" X 20" IRON PIPE
- △ CALCULATED POSITION
- ◻ FOUND ONEIDA COUNTY MONUMENT
- FOUND 1" IRON PIPE
- △ SET MAG. NAIL

I JON W. BANDOW HEREBY CERTIFY THAT I HAVE SURVEYED THIS PARCEL OF LAND UNDER THE DIRECTION OF MR. TOM DEBYLE AND THAT THIS MAP IS A TRUE AND CORRECT REPRESENTATION OF THE LANDS SURVEYED TO THE BEST OF MY KNOWLEDGE AND BELIEF; THAT I HAVE PROVIDED A DESCRIPTION OF THE PARCEL ON A SEPARATE SHEET, AND THAT I HAVE COMPLIED WITH A-E 7 OF THE WISCONSIN ADMINISTRATIVE CODE.

Jon W. Bandow
 JON W. BANDOW

8-31-2015
 DATE



Oneida County Planning and Zoning has no objection to this Certified Survey.

Signature _____ Date _____

REVISED 8/31/2015

TOLERANCES (EXCEPT AS-NOTED)	REVISIONS			SURVEY FOR CLEARY'S INC.		
	NO.	DATE	BY	GENISOT & ASSOCIATES, INC. RHINELANDER, WISCONSIN		
DECIMAL	1			DRAWN BY	SCALE 1" = 200'	MATERIAL
±	2					
FRACTIONAL	3			CHK'D	DATE 9/11/2015	DRAWING NO.
±	4					
ANGULAR	5			TRACED	APP'D	11357-1
±						