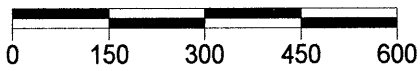


THE SW 1/4 OF THE SW 1/4 AND THE NW 1/4 OF THE SW 1/4 AND THE NE 1/4 OF THE SW 1/4 AND THE S. 3/4 OF THE SE 1/4 OF THE NW 1/4, ALL IN SECTION 8, TOWNSHIP 37 NORTH, RANGE 7 EAST, TOWN OF CASSIAN, ONEIDA COUNTY, WISCONSIN

A 3096

MAP # **A 3096**
 DATE FILED 11-25-15
 BY JLB
 DESCRIPTION FILED
 ONEIDA CO. SURVEYOR'S OFFICE

SCALE
 1" = 300'



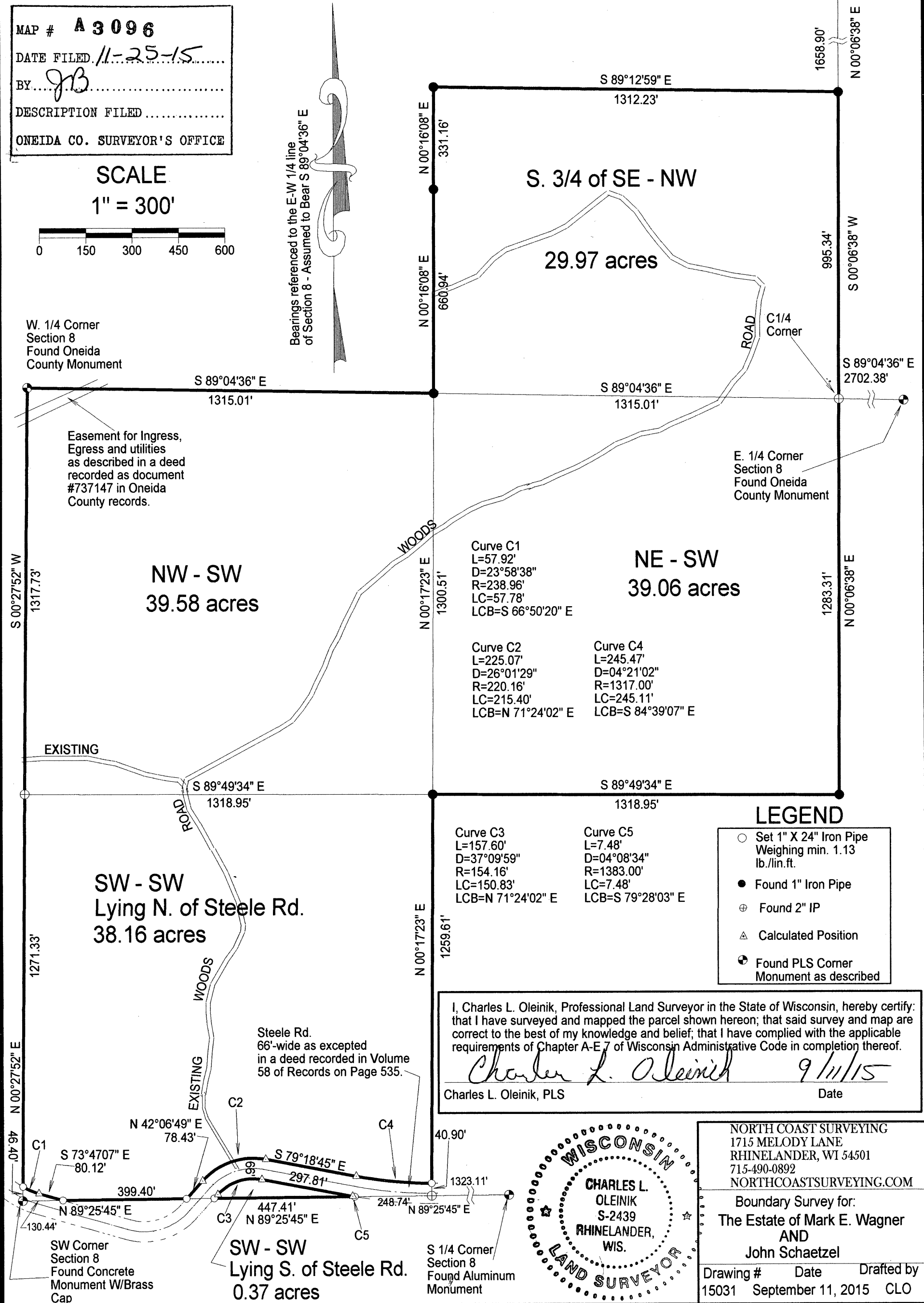
Bearings referenced to the E-W 1/4 line of Section 8 - Assumed to Bear S 89°04'36" E

W. 1/4 Corner Section 8 Found Oneida County Monument

N. 1/4 Corner Section 8 Found Oneida County Monument

Easement for Ingress, Egress and utilities as described in a deed recorded as document #737147 in Oneida County records.

E. 1/4 Corner Section 8 Found Oneida County Monument



LEGEND

- Set 1" X 24" Iron Pipe Weighing min. 1.13 lb./lin.ft.
- Found 1" Iron Pipe
- ⊕ Found 2" IP
- △ Calculated Position
- ⊙ Found PLS Corner Monument as described

I, Charles L. Oleinik, Professional Land Surveyor in the State of Wisconsin, hereby certify: that I have surveyed and mapped the parcel shown hereon; that said survey and map are correct to the best of my knowledge and belief; that I have complied with the applicable requirements of Chapter A-E 7 of Wisconsin Administrative Code in completion thereof.

Charles L. Oleinik 9/11/15
 Charles L. Oleinik, PLS Date



NORTH COAST SURVEYING
 1715 MELODY LANE
 RHINELANDER, WI 54501
 715-490-0892
 NORTHCOASTSURVEYING.COM

Boundary Survey for:
The Estate of Mark E. Wagner AND John Schaezel

Drawing # 15031 Date September 11, 2015 Drafted by CLO

A 3096

A 3096