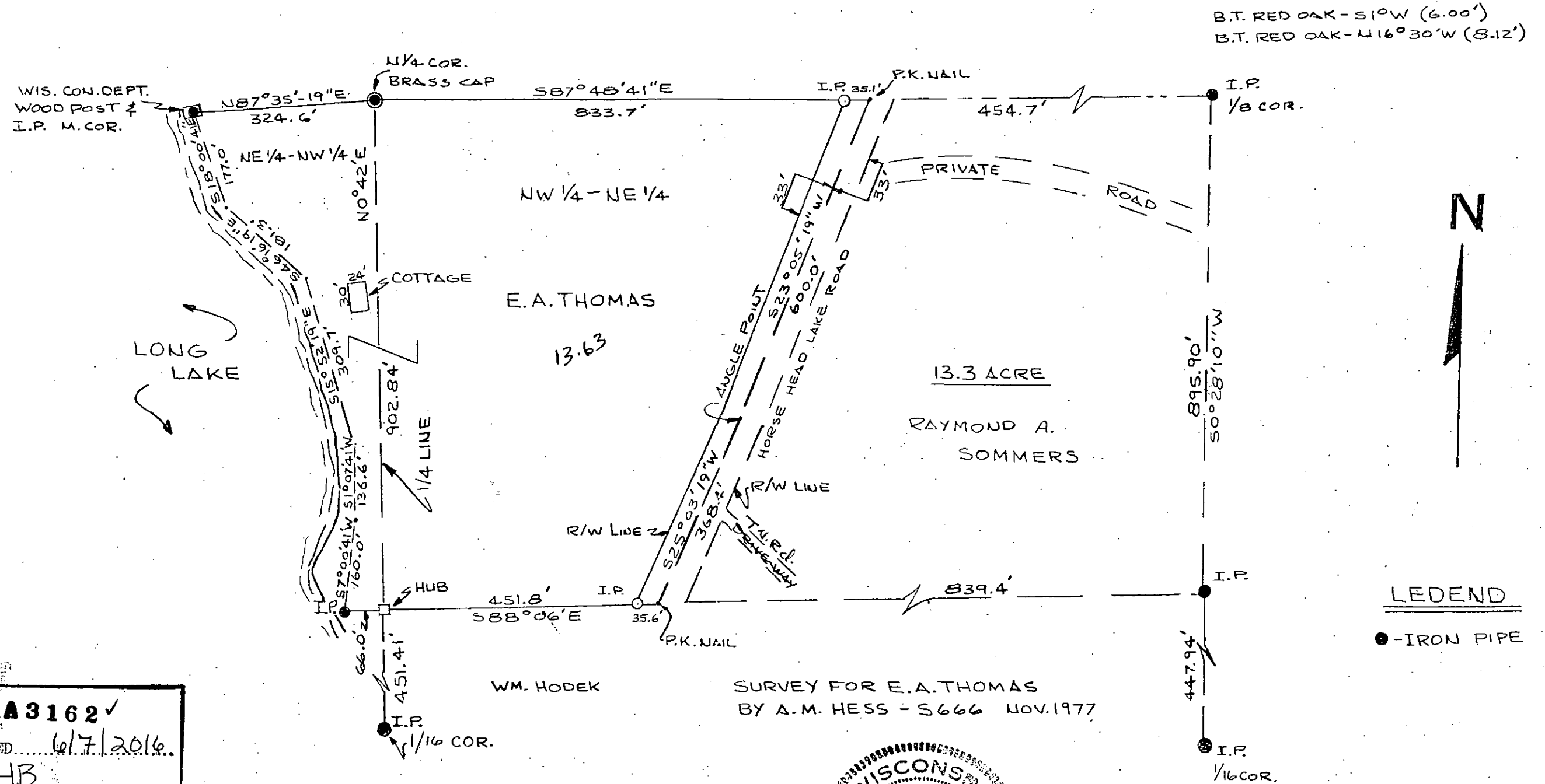


SURVEY OF THE N²/₃ OF THE NE-NW AND THE N²/₃ OF THE NW-NE LYING BETWEEN THE EAST SHORE OF LONG LAKE AND HORSEHEAD LAKE ROAD, IN SEC. 10, T37N, R7E, ONEIDA, CO. WIS.



MAP # **A3162** ✓
 DATE FILED 6/7/2016
 BY HB
 DESCRIPTION FILED
 ONEIDA CO. SURVEYOR'S OFFICE

SURVEY FOR E.A. THOMAS
 BY A.M. HESS - S666 NOV. 1977



LEDEND
 ● - IRON PIPE

SCALE: 1" = 200'