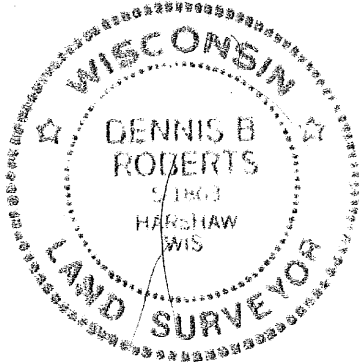


Part of the
SE 1/4 of the NW 1/4
SECTION 32, T37N, R8E

Town of Newbold
 Oneida County, Wisconsin

RECEIVED & FILED # **4333**
 Oneida County Surveyor's Office
 Date **APR. 1. 1. 1986**
 By **MJH**
 OCS Area #.....



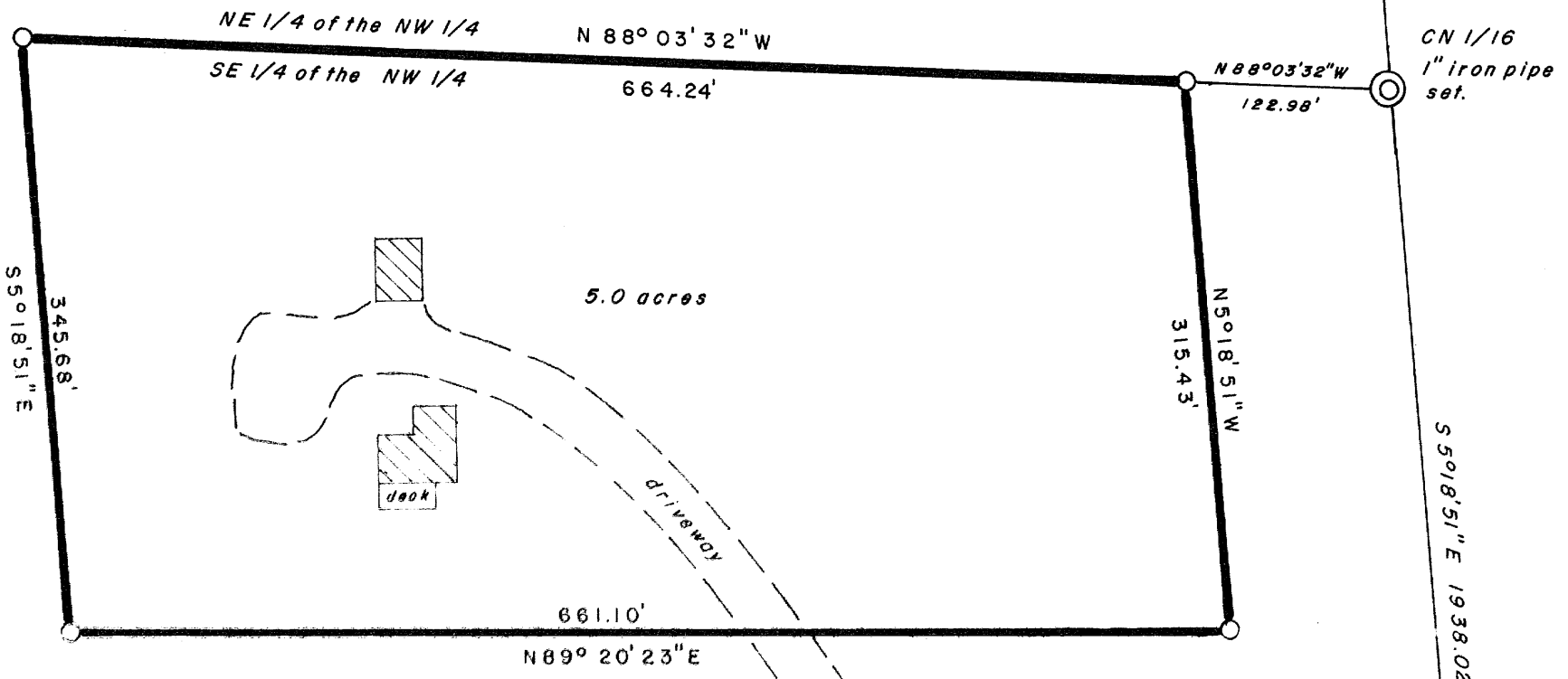
I, Dennis B. Roberts, Registered Land Surveyor S-1863 hereby certify that we have surveyed the property shown hereon; that this map is a true and accurate representation thereof; that said survey was performed by order of Scott Brown and that we have complied with applicable requirements of s. A-E 5.01 of the Wisconsin Administrative Code.

Dennis B. Roberts
 Dennis B. Roberts R.L.S. S-1863

Dated 1/10/86

Replaced 1" iron pipe with Oneida County 2" diameter aluminum pipe 30" long with 3" diameter aluminum tablet, stamped to identify corner.

Nail found in BT.
 N. Pine 17" N69°W, 74.1'
 W. Birch 8" N58°E, 70.52'
 W. Birch 11" S22°W, 37.64'
 Set nail in new BT.
 N. Pine 6" S82°W, 69.6'

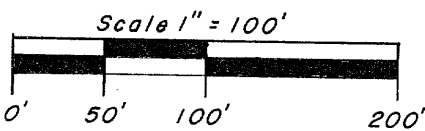


LEGEND

- ⊗ = Oneida County Monument found in place.
- ⊙ = Oneida County Monument set, replaced 1" iron pipe found in place.
- = 1" iron pipe set.
- ▨ = Existing building.

John H. Fisher & Associates, Inc.
 Minocqua, Wisconsin

Oneida County Monument.
 2" diameter aluminum pipe
 with 3" diameter aluminum
 tablet, found in place.



PINE GROVE DRIVE

