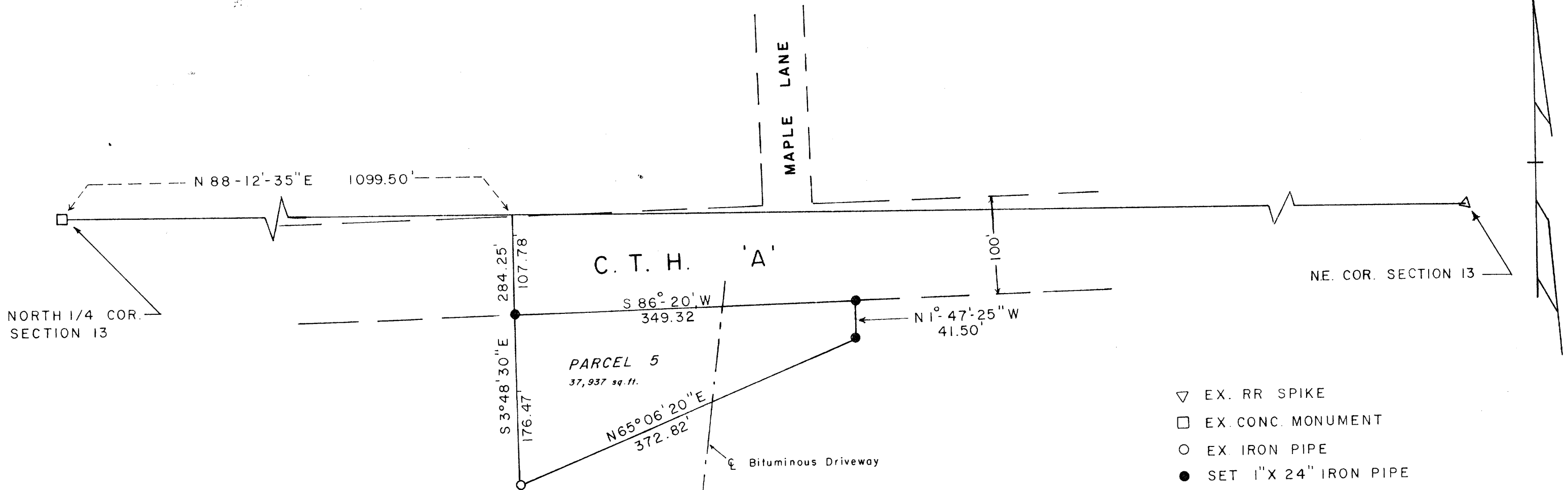


LOCATED IN THE NW-NE & NE-NE, SECTION 13, TOWNSHIP 38 NORTH, RANGE 9 EAST,
 BEING PART OF BLOCK 'A', MAPLE GROVE SUBDIVISION, TOWN OF SUGAR CAMP,
 ONEIDA COUNTY, WISCONSIN.

RECEIVED & FILED # **43.3.5**
 Oneida County Surveyor's Office
 Date **JUN. 19 1986**
 By *MJA*
 OCS Area #.....



- ▽ EX. RR SPIKE
- EX. CONC. MONUMENT
- EX. IRON PIPE
- SET 1" X 24" IRON PIPE

I, William E. Bendow, hereby certify that I have surveyed the above parcel
 at the request of Frito-Lay Inc., and that the above map is a
 true and correct representation of the lands surveyed to the best of my
 knowledge and belief.
 That I have provided a description of the parcel on a separate sheet.

William E. Bendow
 Surveyor

GENISOT & ASSOCIATES INC.		
1512 EAGLE ST., RHINELANDER, WISCONSIN 54501		
SCALE: 1" = 100'	APPROVED BY:	DRAWN BY W.E.B.
DATE: 6-4-86		REVISED

