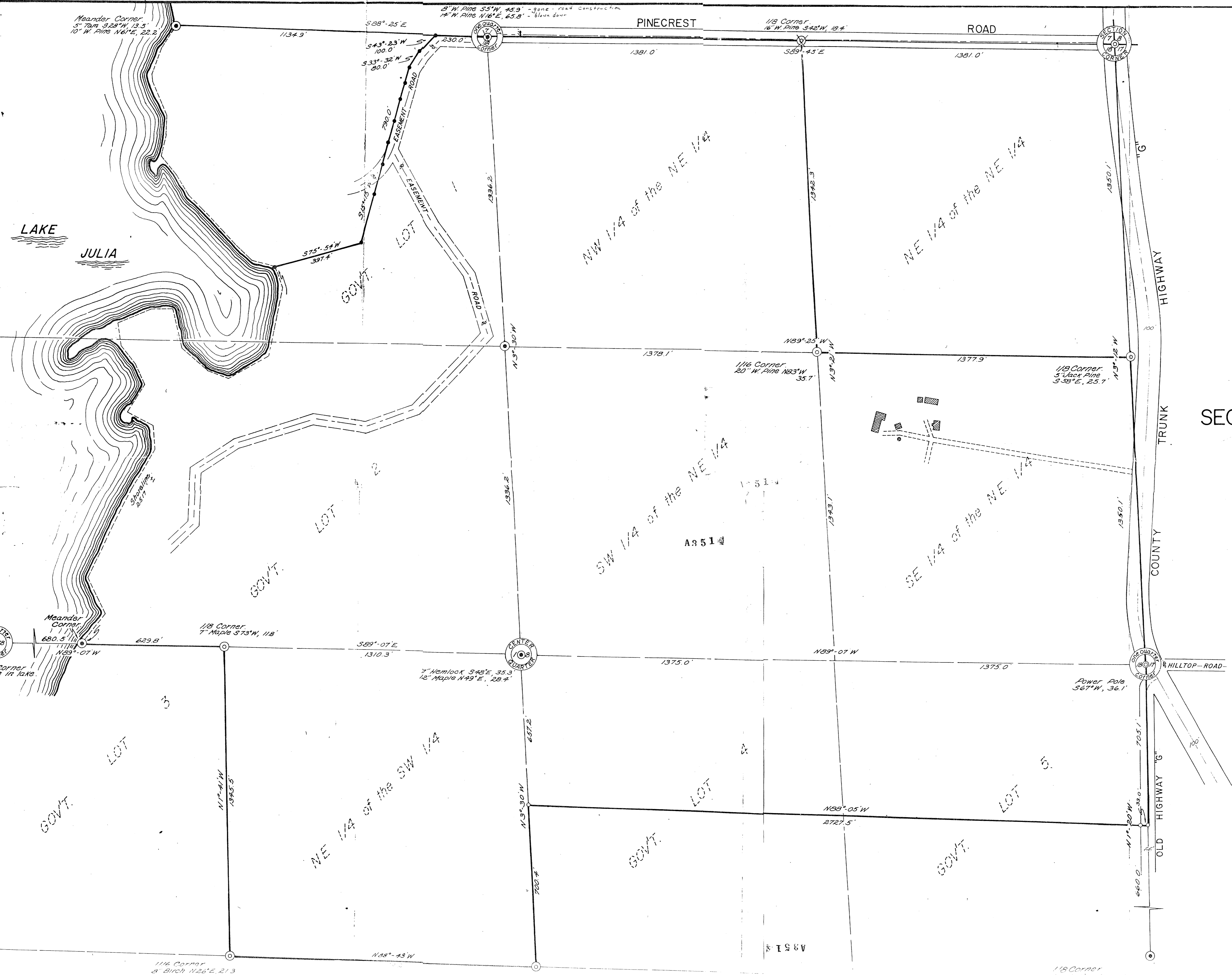


RECEIVED & FILED #  
Oneida County Surveyor's Office  
Date: DEC 5 1988  
By: \_\_\_\_\_  
OCS Area #: \_\_\_\_\_



Bearings Solar  
○ = Iron pipe set  
● = Iron pipe found in place

Part of  
**SECTION 18, T36N, R9E**  
ONEIDA COUNTY, WIS.

A351

Scale 1" = 200'  
November, 1968  
Revised: June, 1969

Northwoods Surveyors, Inc.  
*William D. Cameron*  
Land Surveyor

Corner  
1/2 in lake

1/4 Corner  
3" Birch N26°E, 21.3'

1/8 Corner  
12" Hemlock 576'E, 6.7'

1/8 Corner  
Line to County 11.1'