

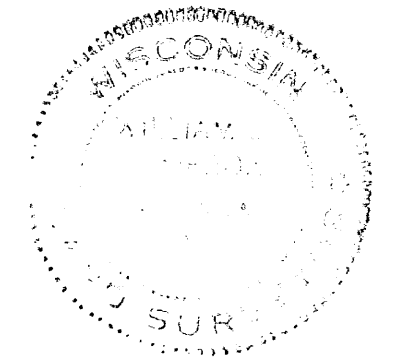
RECEIVED & FILED #A 3-5-2
 Oneida County Surveyor's Office
 Date FEB. 6 1967
 BY S.S.R.
 OCS Area #



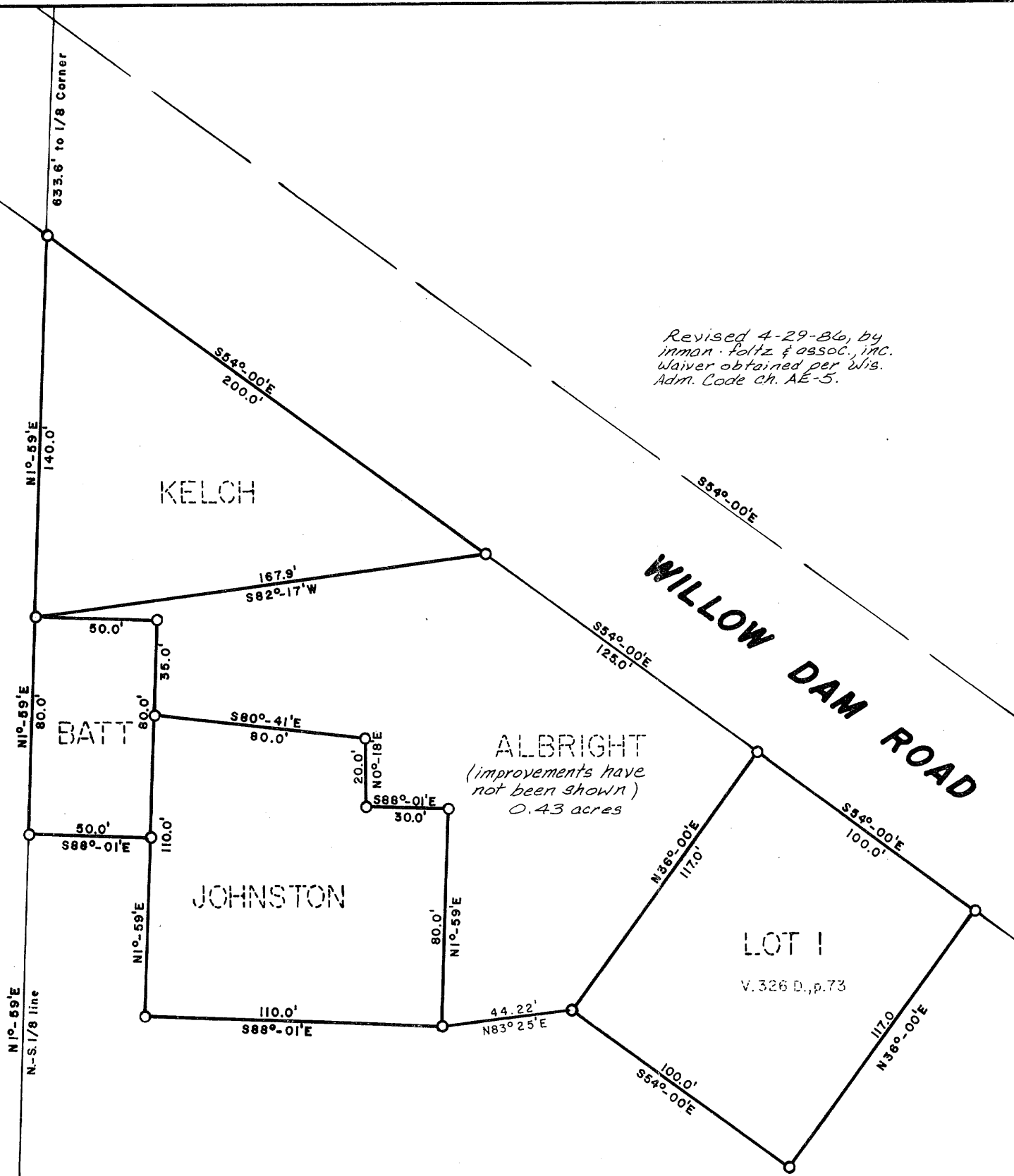
PART OF
NE 1/4 NE 1/4-SECTION 15
T37N R5E

ONEIDA COUNTY, WIS.
 Scale: 1"=50' July, 1966
William S. Cameron
 William S. Cameron-reg. land surveyor

○=Iron pipe



*Revised 4-29-86, by
 inman·foltz & assoc., inc.
 Waiver obtained per Wis.
 Adm. Code ch. AE-5.*



inman·foltz and associates, inc.
 minocqua, wisconsin

S.L.FOLTZ

1-15-375

A 3 5 2

A 3 5 2

A 3 5 2