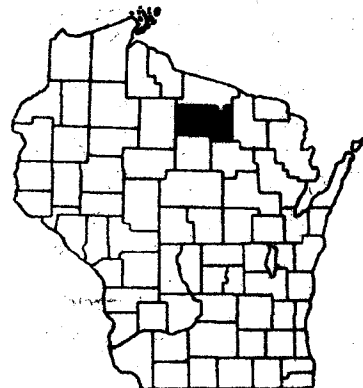


INDEX OF SHEETS

SHEET NO. 1	TITLE
SHEET NO. 2	TYPICAL CROSS SECTIONS
SHEET NO. 2	ESTIMATE OF QUANTITIES
SHEET NO. 2	MISCELLANEOUS QUANTITIES
SHEET NO. —	RIGHT OF WAY PLAT
SHEET NO. 3-5	PLAN AND PROFILE STA. 106+50 TO STA. 160+00
SHEET NO. 6-8	STANDARD DETAILS
SHEET NO. —	DRAINAGE STRUCTURES
SHEET NO. 9-17	CROSS SECTIONS



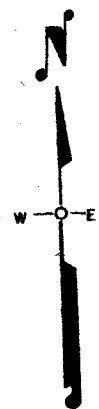
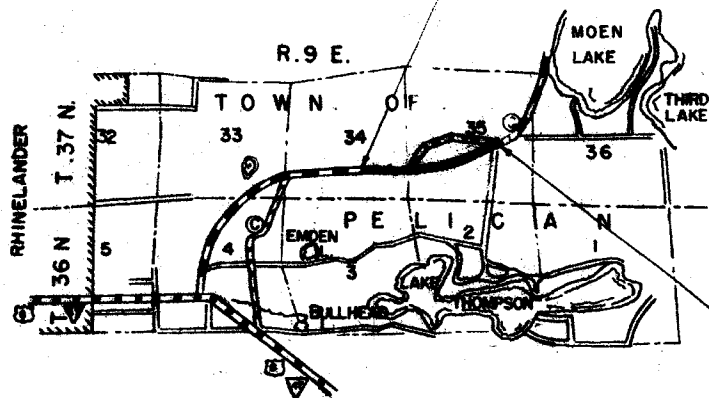
STATE HIGHWAY COMMISSION OF WISCONSIN

PLAN AND PROFILE OF PROPOSED  
**RHINELANDER-GAGEN ROAD**  
 C.T.H. "C"  
 ONEIDA COUNTY  
 PROJECT S 0706(2)

BEGINNING AT A POINT ± 1210 FT. WEST AND ± 1100 FT. NORTH OF THE S.W. COR. OF SECTION 35, T.37N, R.9E. AND EXTENDING NORTHEASTERLY TO A POINT ± 1370 FT. WEST AND 2450 FT. NORTH OF THE SOUTHEAST CORNER SECTION 35, T.37N, R.9E.

SCALES { PLAN 1 IN. = 100 FT.  
 PROFILE HOR. 1 IN. = 100 FT. VERT. 1 IN. = 10 FT.  
 CROSS SECTIONS HOR. 1 IN. = 5 FT. VERT. 1 IN. = 5 FT.

STATION 106+50 BEGINNING OF PROJ. S0706(2) =  
 END OF PROJ. S0706(1) 1955



STATION 160+00 END OF PROJ. S0706(2)

CONVENTIONAL SIGNS

STATE LINE	.....	GULVERTS IN PLACE	-----
COUNTY LINE	.....	GULVERTS REQUIRED	-----
TOWNSHIP OR RANGE LINE	.....	DROP INLET	□
SECTION LINE	.....	POWER POLE	—●—
NEW RIGHT OF WAY LINE	.....	TELEPHONE OR TELEGRAPH POLE	—○—
PRESENT RIGHT OF WAY LINE	.....	RIGHT OF WAY MARKERS	—▲—
WIRE FENCE { WOVEN	.....	REFERENCE STAKE FOR HUBS ONLY	—●—
{ BARBED	.....	MARSH	—■—
LOT LINE	.....	HEDGE	—○—
CORPORATE OR CITY LIMITS	.....	TREES	—●—
PROPERTY LINE	.....		
TRAVELED WAY OR P.E.	.....		
RAILROADS	.....		
BASE OR SURVEY LINE	.....		
		GROUND ELEVATION	DATUM LINE 739
		GRADE ELEVATION	DATUM LINE 736

LAYOUT

SCALE 0 MILES 1

TOTAL NET LENGTH OF CENTERLINE = 1.013 MI.

COUNTY AND HIGHWAY	ROUTE AND SECTION	CLASS AND AGREEMENT		FEDERAL DIVISION OFFICE	SHEET NUMBER	TOTAL SHEETS
43.6	706.0		11.2	WIS. 4	1	17

MAP # **A3525** ✓  
 DATE **8-19-2019**  
 BY **SC**  
 ONEIDA CO. SURVEYOR'S OFFICE

STATE HIGHWAY COMMISSION OF WISCONSIN  
 MADISON, WISCONSIN

SURVEYOR **BEILING** NOTE BOOK **8479 8848**  
 DISTRICT COMPUTER **L.P.** M. O. CHECKER  
 DISTRICT CHECKER **ASA** CORRECT

CORRECT:  
 DATE **2-27-56** *Henry W. ...* DISTRICT ENGINEER

RECOMMENDED FOR APPROVAL:  
 DATE **7/7/56** *J. P. ...* ENGINEER OF DESIGN

APPROVED:  
 DATE **3/29/58** *D. E. ...* STATE HIGHWAY ENGINEER

DEPARTMENT OF COMMERCE  
 BUREAU OF PUBLIC ROADS

APPROVED: \_\_\_\_\_

APPROVED FOR ONEIDA COUNTY

*[Signature]*

ONEIDA CO. HWY. COMMISSIONER

Title \_\_\_\_\_

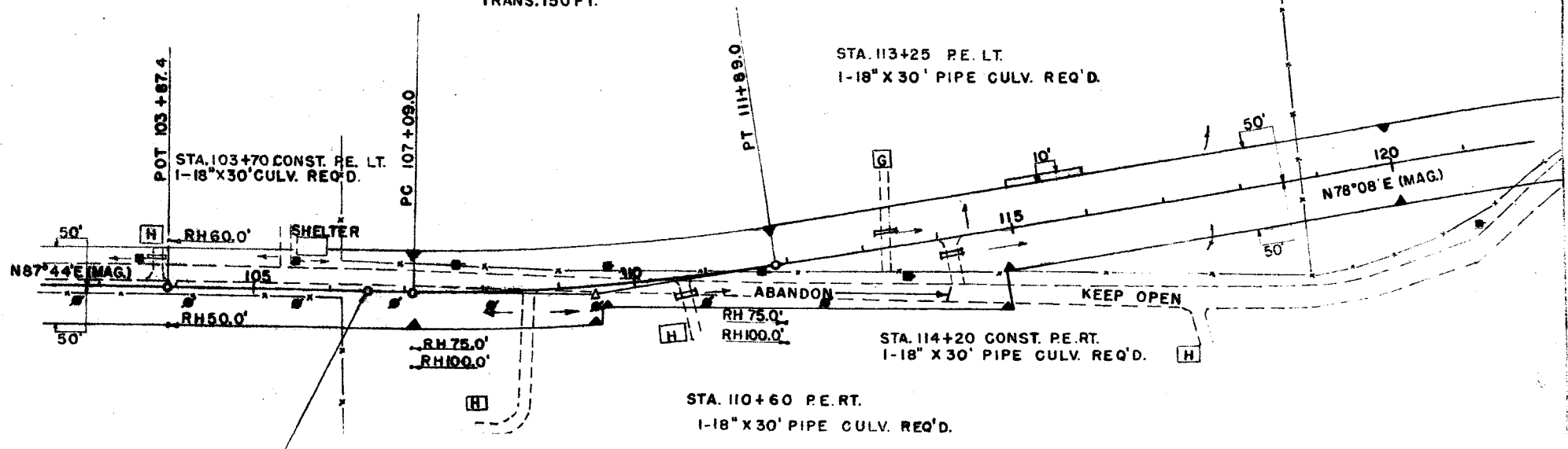
13525

352

S0706(2) 3 17



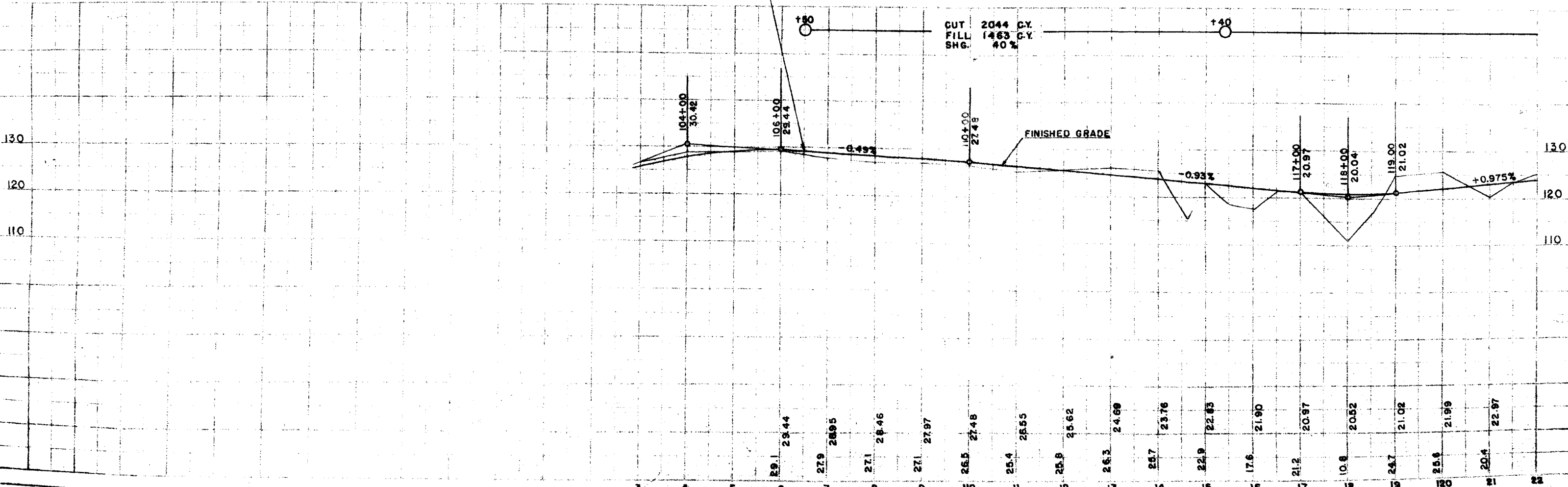
P.I. = 109+49.5  
 A = 9° 36' LT.  
 D = 2° 00'  
 T = 240.5'  
 L = 480.0'  
 SE = .04 FT. PER FT.  
 TRANS. 150 FT.



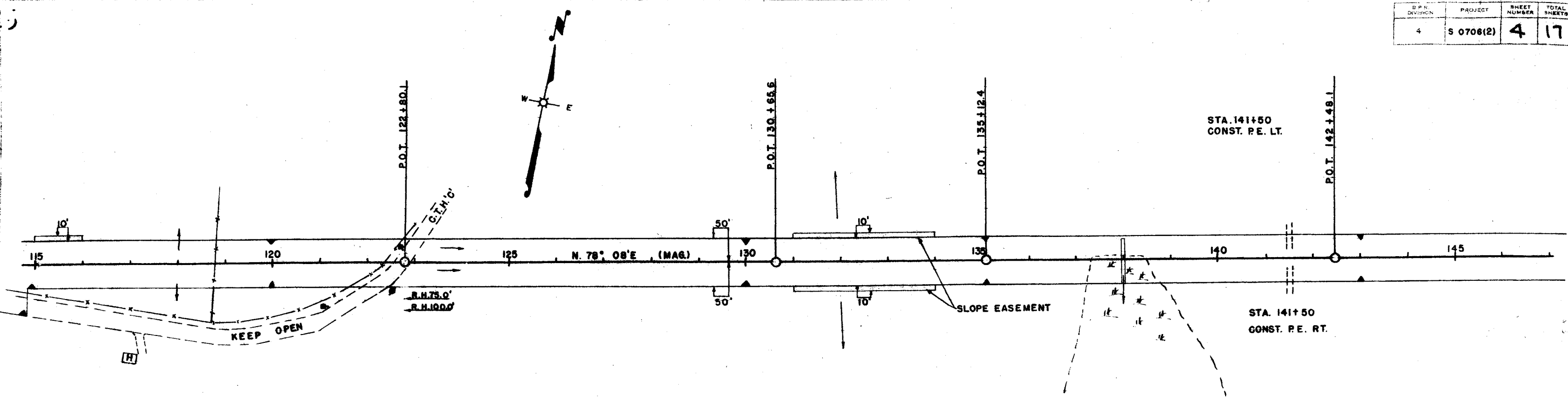
STA. 106+50  
 BEGINNING PROJ. S0706(2)-  
 END OF PROJ. S0706(1)

BENCH MARKS			
NO	STATION	DESCRIPTION	ELEV.
11	106+42	SPIKE IN 10" NORWAY 60' LT.	129.24
12	115+40	SPIKE IN 8" POPLAR 125' RT.	121.83

NET CENTERLINE LENGTH STA. 106+50 TO STA. 117+00=1050 LIN. FT.



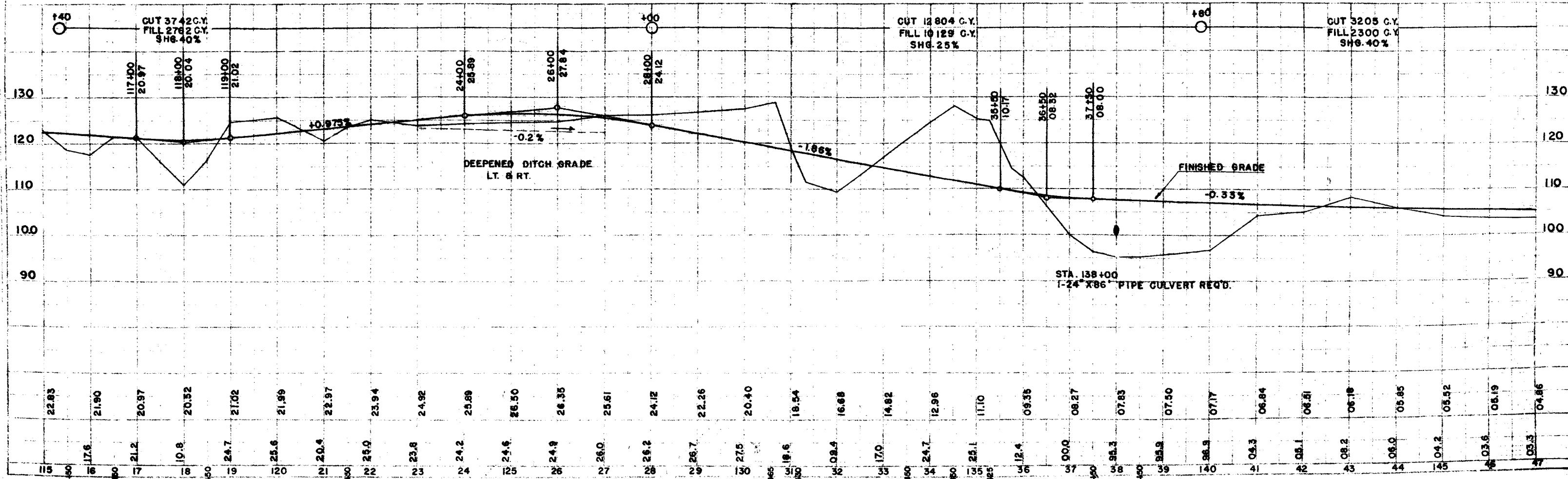
D.P.C. DIVISION	PROJECT	SHEET NUMBER	TOTAL SHEETS
4	S 0708(2)	4	17

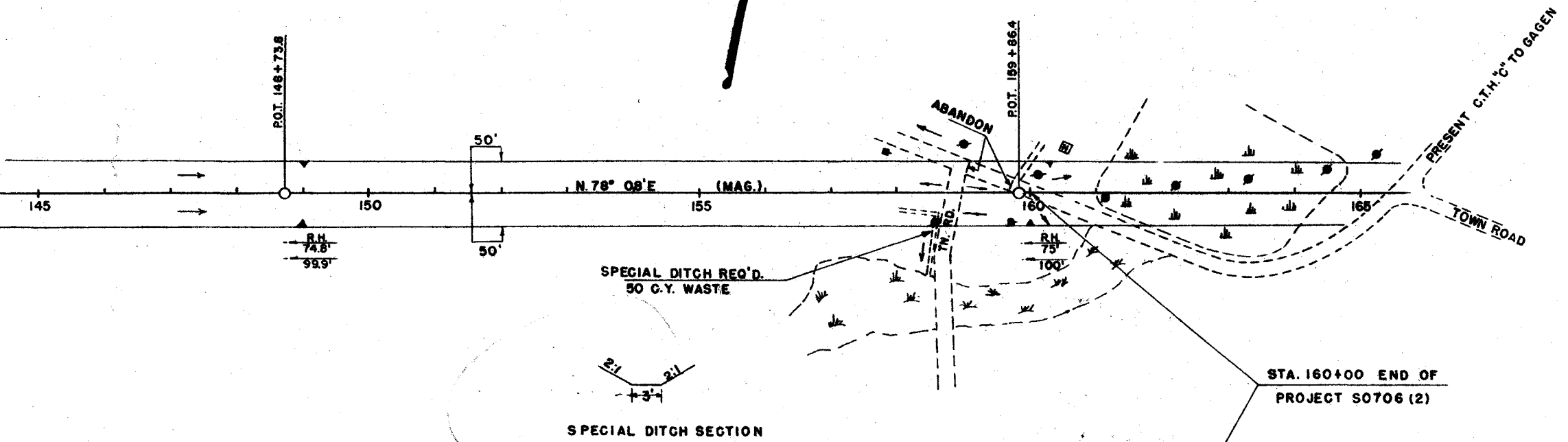
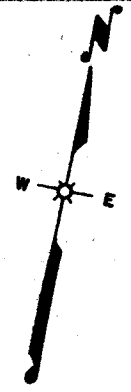


**BENCH MARKS**

NO	STATION	DESCRIPTION	ELEV.
12	115+40	SPIKE IN 8" POPLAR 125' RT.	121.83
13	130+35	SPIKE IN 10" POPLAR 96' LT.	128.92
14	140+20	SPIKE IN 5" POPLAR 96' LT.	102.77
15	150+30	SPIKE IN 10" BIRCH 85' LT.	111.68

STA 117+00 TO STA. 147+00 NET CENTERLINE LENGTH = 3000 LIN. FT.





**BENCH MARKS**

NO	STATION	DESCRIPTION	ELEV.
14	140+20	SPIKE IN 8" POPLAR	96' LT. 102.77
15	150+30	SPIKE IN 10" BIRCH	85' LT. 111.68
16	161+90	SPIKE IN 4" POPLAR	126' RT. 99.55

