

4360

4360

ed on both sides
to Sta. 12489.25

Right of Way Blue Print
500 LINE RAILROAD
ACROSS T37NR11E.
ONEIDA CO.

From Melendy's Files

RECEIVED & FILED #10000
Office of the Surveyor's Office
MAR. 27 1887
J. H. [unclear]
C.S. A. 1887

12460+19 PT.
12461+30-2'x 3'-36" T.B.

12460

12461+27

234

No. 17.

12470 12469+88

12477+37-3'x3'-38" T.B.

No. 18.

12480

12483+05

No. 19

Match Mark

12489+65

Map #4

12490

Map #5

12492+03 H.X.
Platform - 2432+24

SPUR-2

7 both sides
12489+65

12432+81-2'x2'-48'

T BOX

12446+92-2'x2'-33'
CONC. P.

12452+09 PC

D = 0°40'
Δ = 5°24'

12460+19 PT

12461+30-2'x3'-36 TB

12455
12454

12456+63

12460

12461+27

234

No.

26

23

27

22

12390 12389+33.5

No. 12.

No. 13.

12400

12402+64

No. 14.

12447

253

12410+13-2 $\frac{1}{2}$ 'x3 $\frac{1}{2}$ '-36' T. Box.

12415+94.5

Note - Right of Way fenced on both
front Sta. 12317+13 to Sta. 12440
from No. 164.

12350

$\Delta = 15^{\circ} 52'$

12355+67

No. 10.

12359+2

12358+55 12" C.I.P. - 36'

12360

12370

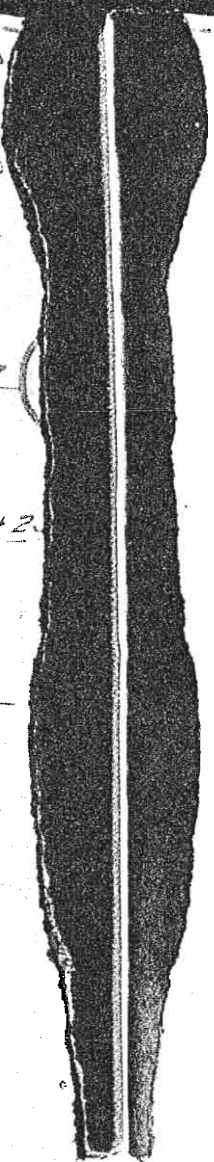
12376+03

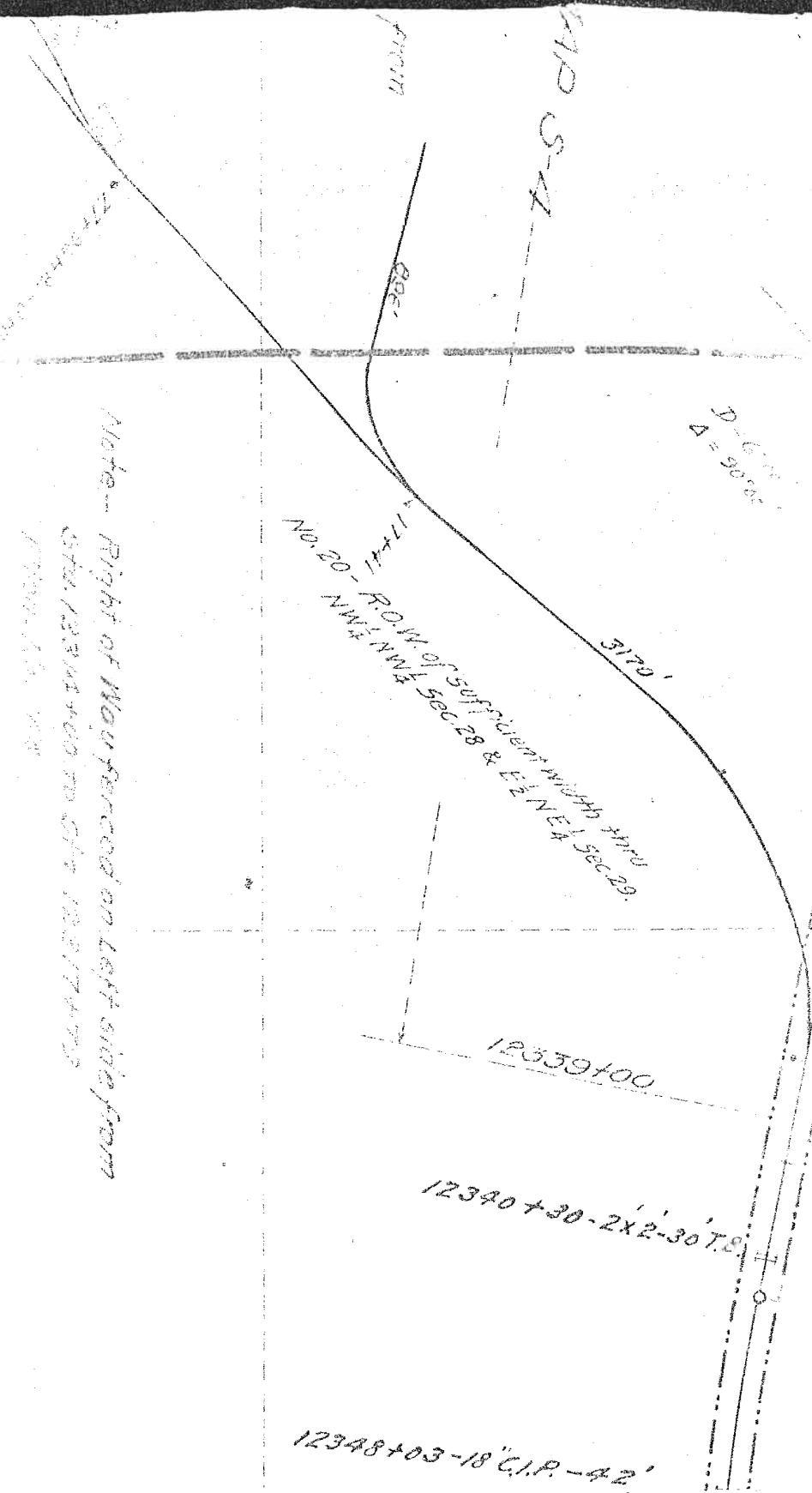
12380

12380+53 - 16" C.I.P. - 42'

No. 11.

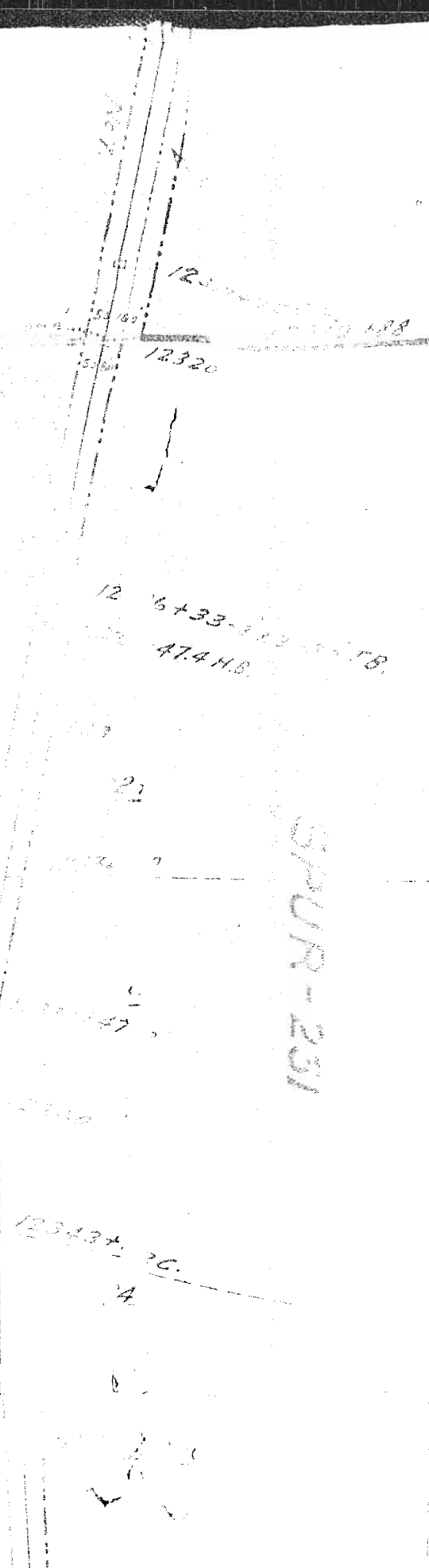
12390 12389+33.5





Note - Right of Way forced on left side from Sta 12341+00 to Sta 12347+00 from the north

placed on both sides of Sta 12489



SPUR - 231

Match Mark

12278+45

Map # 4

12280

No. 1.

12283+00

12290

2-T.B. L&R.

12292+01 H.X.

12294+00

$\Delta = 10^{\circ} 46'$

No. 2.

12300

12302+87

251

12304+00
12305+88

No. 5
12307+46 Ctr. Depot.

RAILROAD
12303+47

No. 6

12310

GAGEN

CHICAGO & NORTH WESTERN

N

12460

12461+27

254

12461+30-2x

20

NOTE - Boundaries shown are for
the Chicago & North Western
Railroad

25

24

OUR-234B.

Easement of sufficient width
Dated - April - 25 - 1916. No. 12

12508+51 - 3'x3'-35' T.B.

12510 12510+68

12514+07

235

12520

No. 2.

12528+55 - 3'x4'-37' T.B.

12530

12536+69

406

Note - Right of Way fenced on both sides
from Sta. 12489+65 to Sta. 12536+69
Plan No. 164.

ONEIDA COUNTY

FOREST COUNTY

VN-37 N. RANGE-II E

