

Part of
GOV'T. LOT 6
SECTION 2, T36N, R9E

Oneida County, Wis.

Joe - Pearson
Deliver w/
ABST.

A364

A364

Bearings Solar

Scale 1" = 60'
September, 1971

Northwoods Surveyors Inc.
William J. Cameron
Land Surveyor

THOMPSON
LAKE

-1-
1.0 Acres

KARR

-2-
0.9 Acres
Johnson

● = Iron pipe found in place.
○ = Iron pipe set.

RECEIVED & FILED #A364
Oneida County Surveyor's Office
Date: **SEP. 21 1971**
By: WJC
OCS Area #.....

A364

○ = Iron pipe set

THOMPSON LAKE

Vol. 318 Deeds
Page 248

-2-
0.9 ACRES
Johnson

-3-
0.6 ACRES

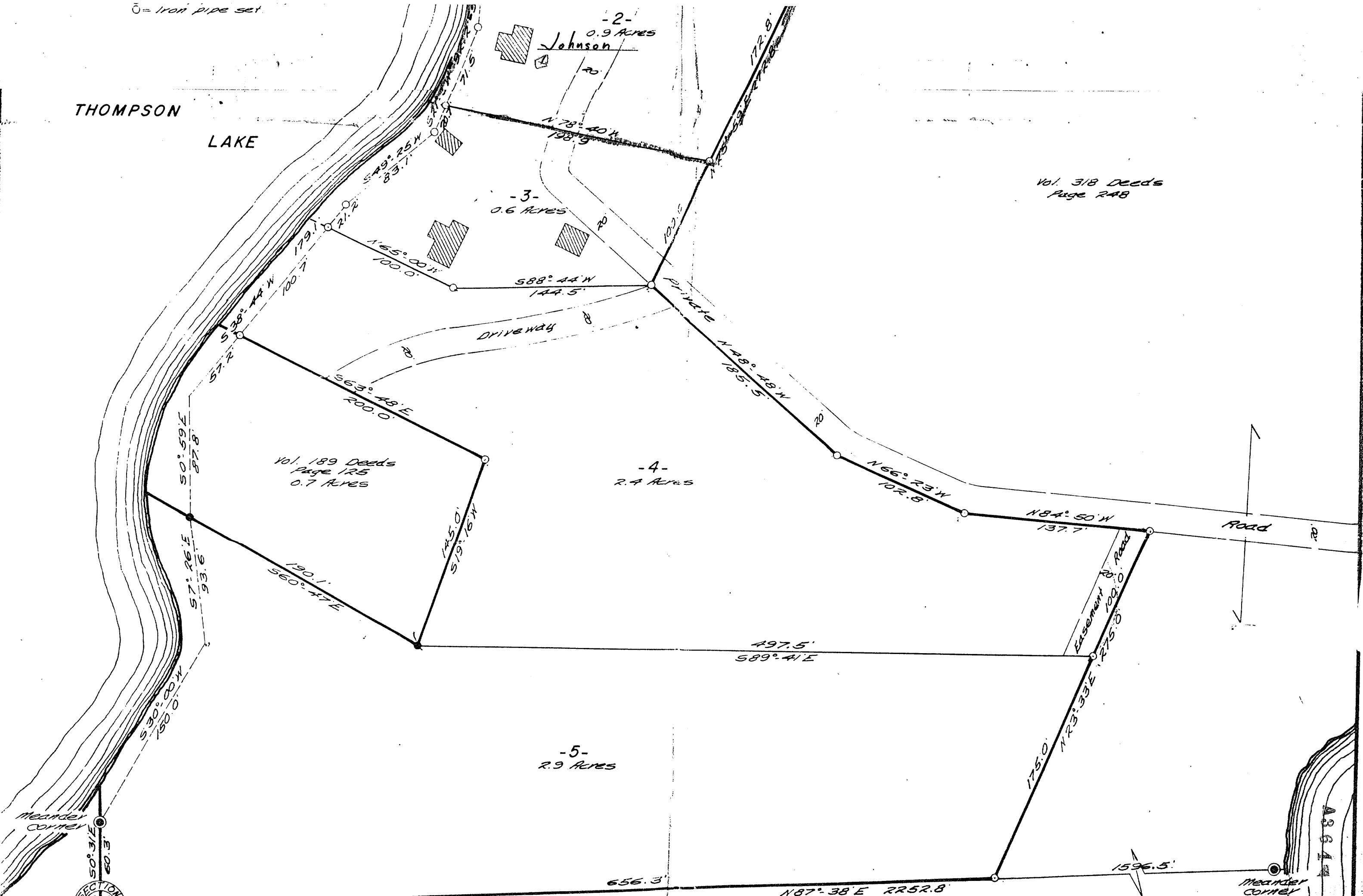
-4-
2.4 ACRES

Vol. 189 Deeds
Page 125
0.7 ACRES

-5-
2.9 ACRES

Meander corner

MEANDER CORNER



SECTION 10N
RANGE 31E
TOWNSHIP 10N

AS 644