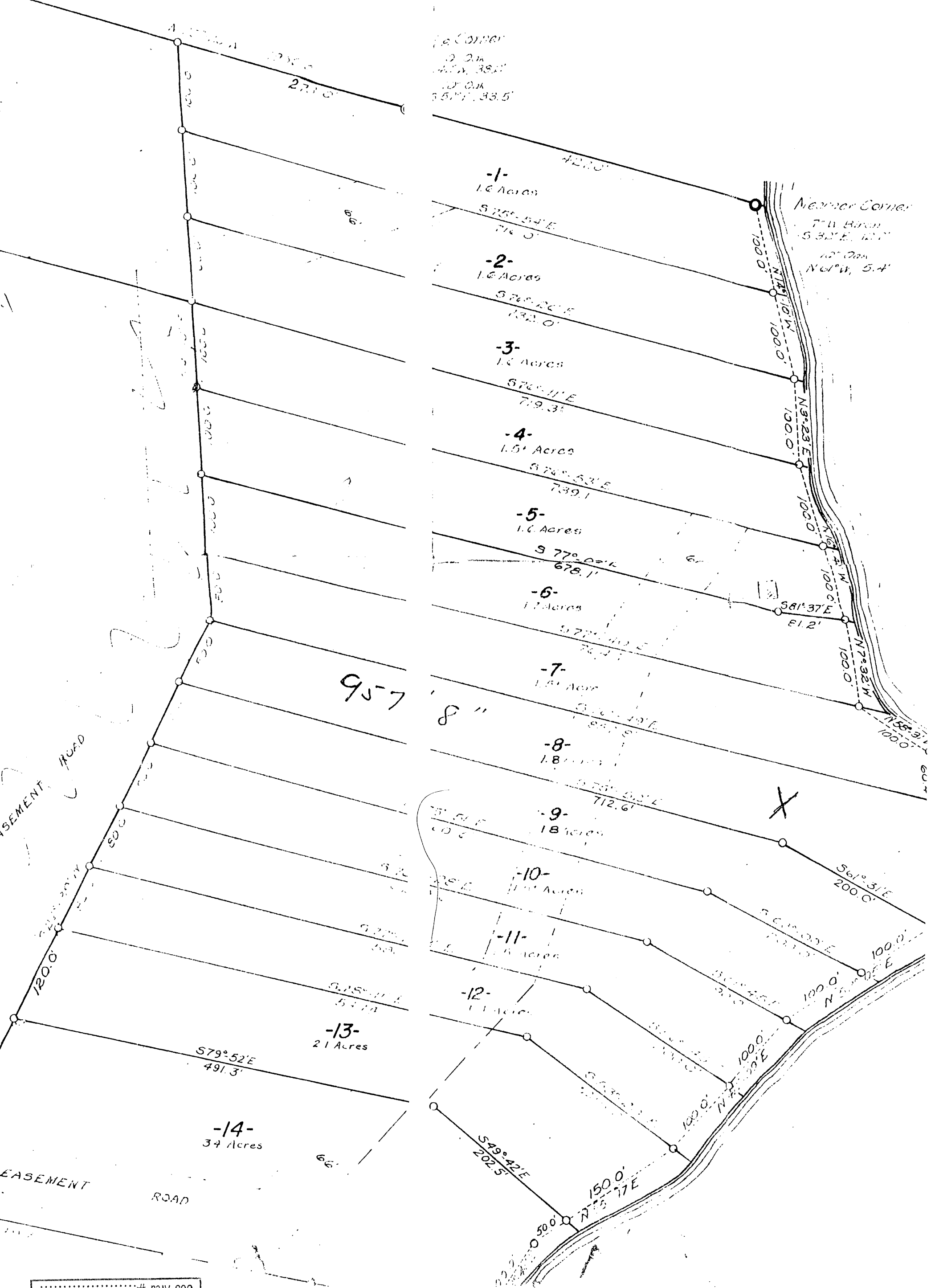




1/8 Corner
 20" Oak
 N 65° E, 45.0'
 14" Oak
 N 45° W, 42.5'
 Oneida Co. Brass cap in C
 West 33.0'

832.6

[Handwritten signature]



NE CORNER
 2.2m
 45° 38' 15"
 10' 0.11
 357' 33.5'

NEARER CORNER
 7° 11' 30"
 S 32° E 120'
 10' 0.11
 N 61° W 5.4'

957

8"

GL-7-8-3

11-39-11

RECEIVED & FILED #
 Onida County Surveyor's Office
 Date: OCT. 23 1987
 By: nqz
 OCS Area #

