

RECEIVED & FILED # 1873
 Oneida County Surveyor's Office
 Date... NOV. 27. 1987
 By... [Signature]
 OCS Area #

Meander Corner.
 5" Tam 928°W, 13.5'
 10" W. Pine N61°E, 22.2'

8" W. PINE S5°W, 45.9' - gone - road construction
 14" W. PINE N16°E, 65.8' - blown down

PINECREST

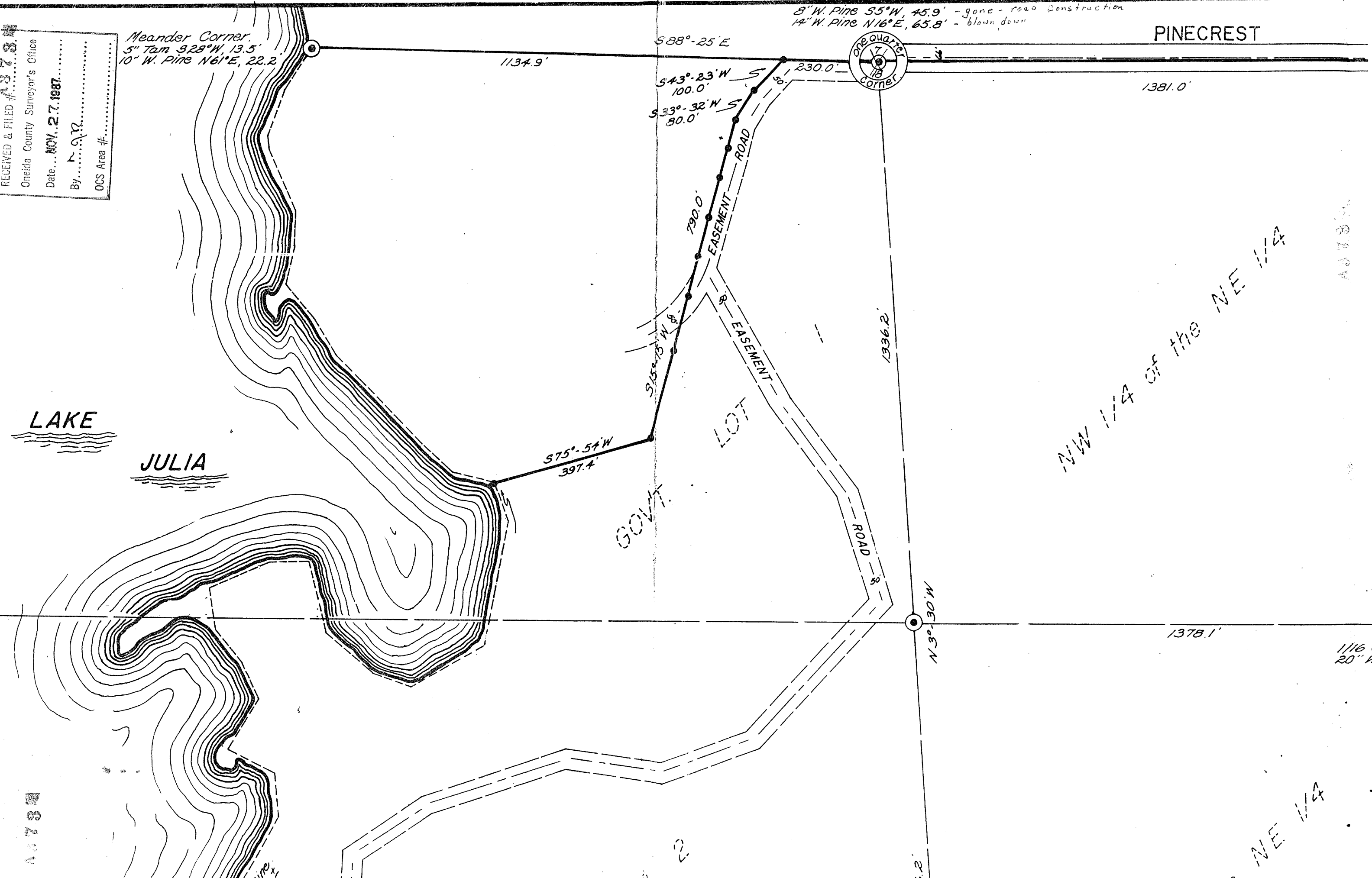
LAKE
 JULIA

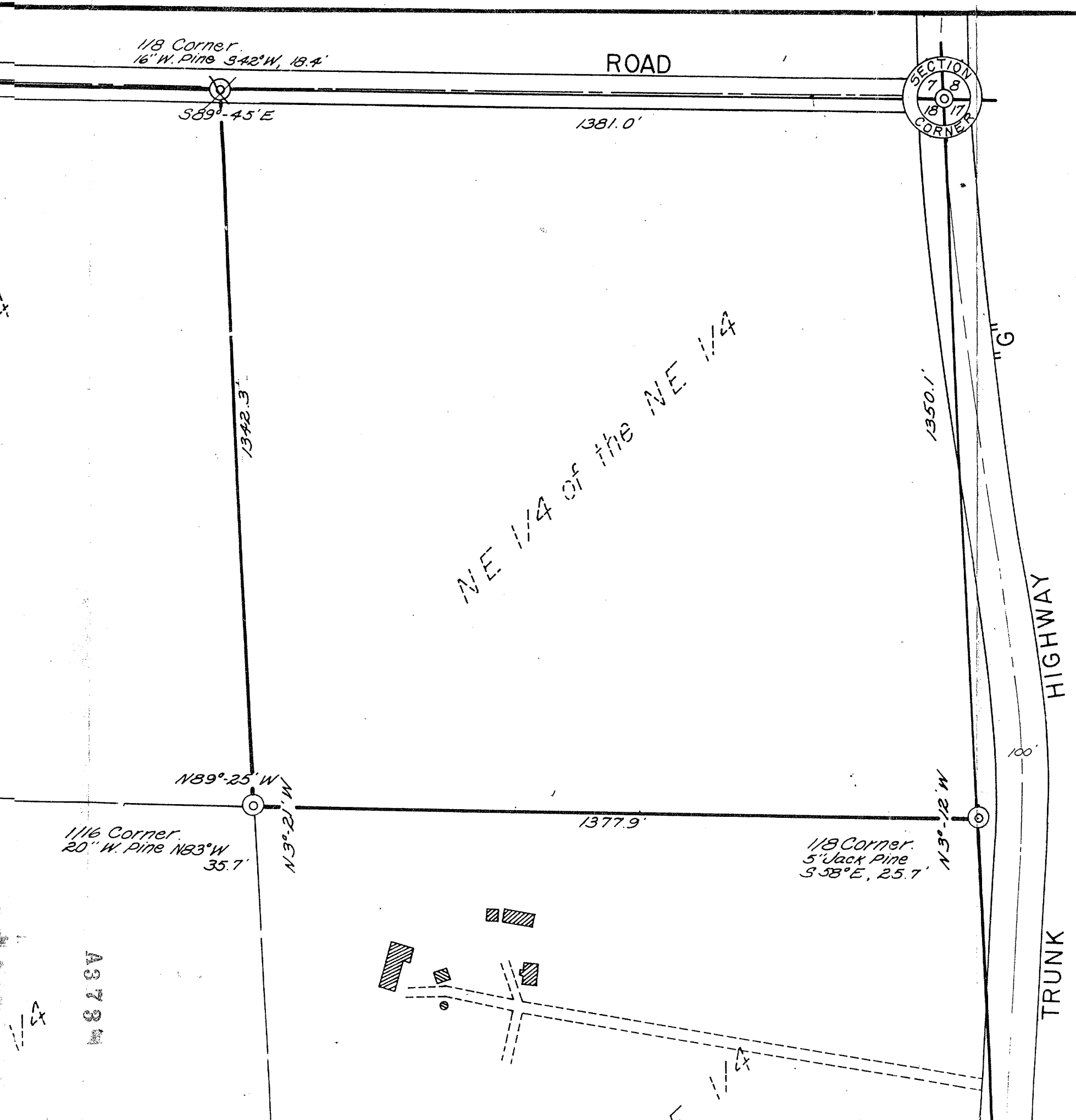
GOV'T

LOT

NW 1/4 of the NE 1/4

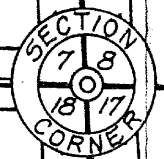
NE 1/4





1/8 Corner.
16" W. Pine 342°W, 18.4'

ROAD



Bearings Solar

389°-45'E

1381.0'

1342.3'

NE 1/4 of the NE 1/4

1350.1'

"G"

HIGHWAY

189°-25'W

1377.9'

1/16 Corner.
20" W. Pine N83°W
35.7'

1/8 Corner.
5" Jack Pine
358°E, 25.7'

N3°-12'W

100'

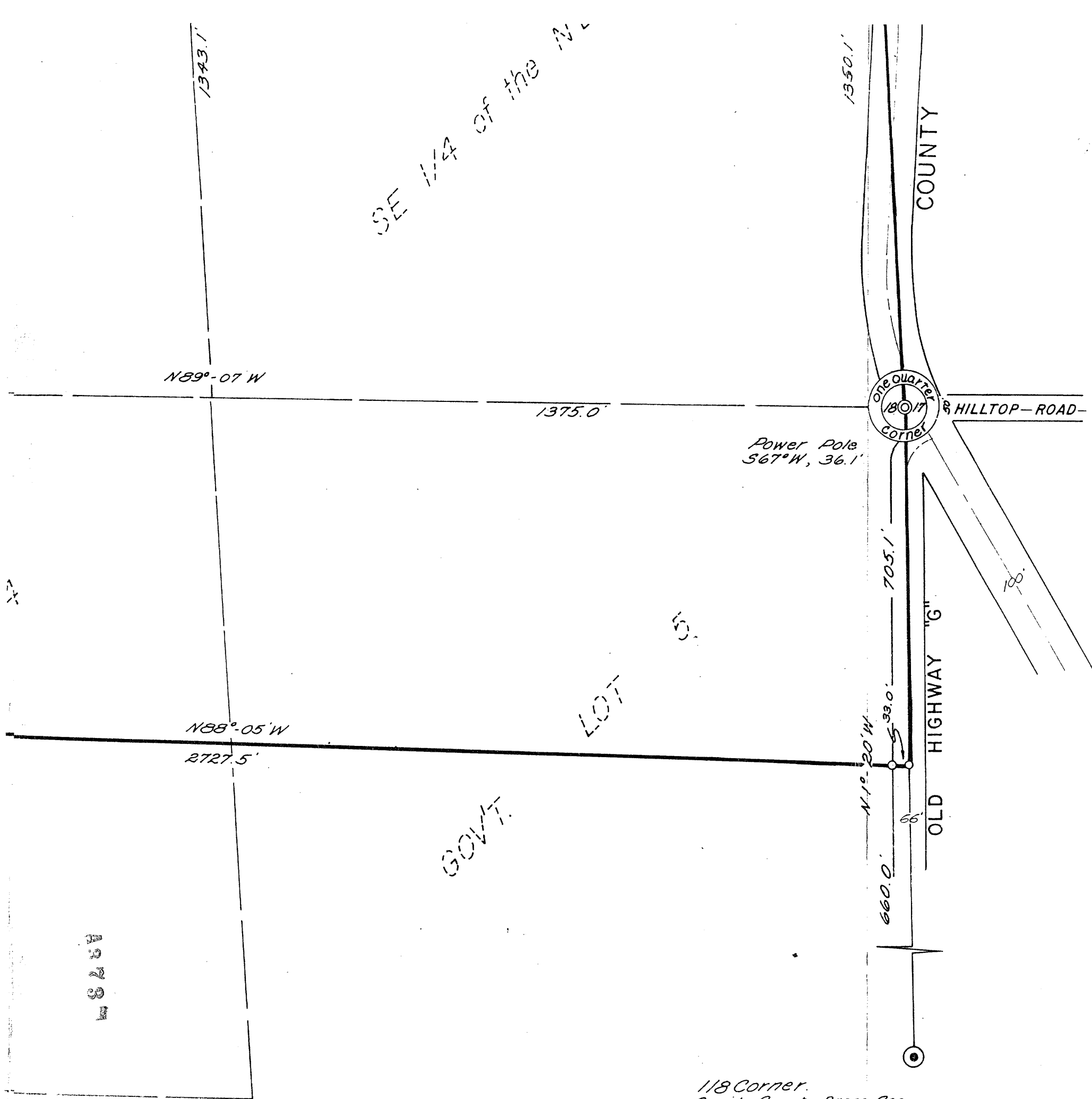
TRUNK

○ = Iron pipe set
● = Iron pipe found in place.

Part of
SECTION 18, T36N, R9E
ONEIDA COUNTY, WIS.

AS 73 W

1/4



Scale 1" = 200'
 November, 1968
 Revised: June, 1969

Northwoods Surveyors, Inc.
 William J. Cameron
 Land Surveyor.

