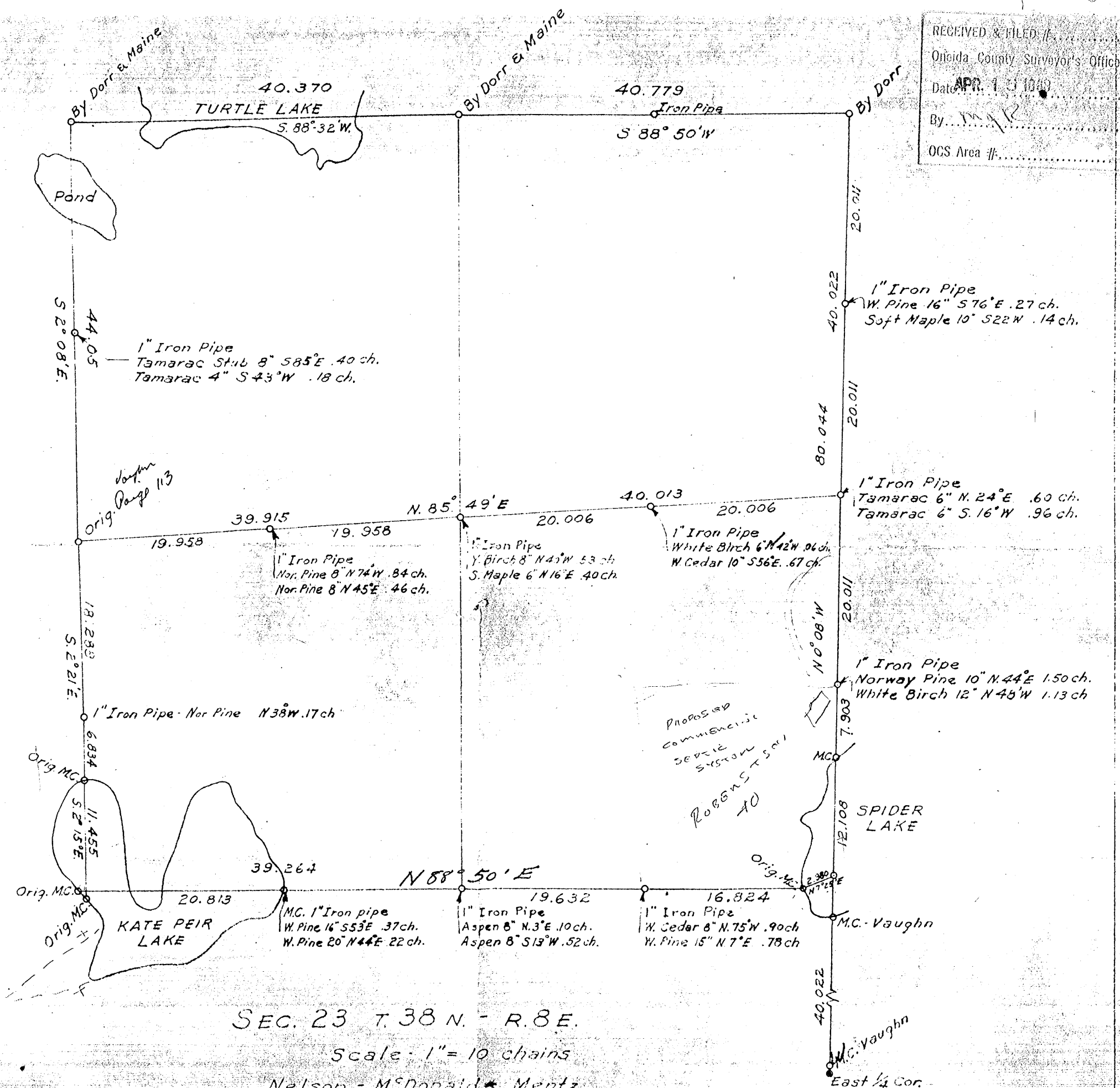


RECEIVED & FILED //
 Onondaga County Surveyor's Office
 Date: APR 1 1969
 By: [Signature]
 OCS Area #:



Assumed destination
 1° 30' E.



SEC. 23 T. 38 N. - R. 8 E.

Scale: 1" = 10 chains

Nelson - McDonald * Mentz

East 1/4 Cor.
 Sec 26