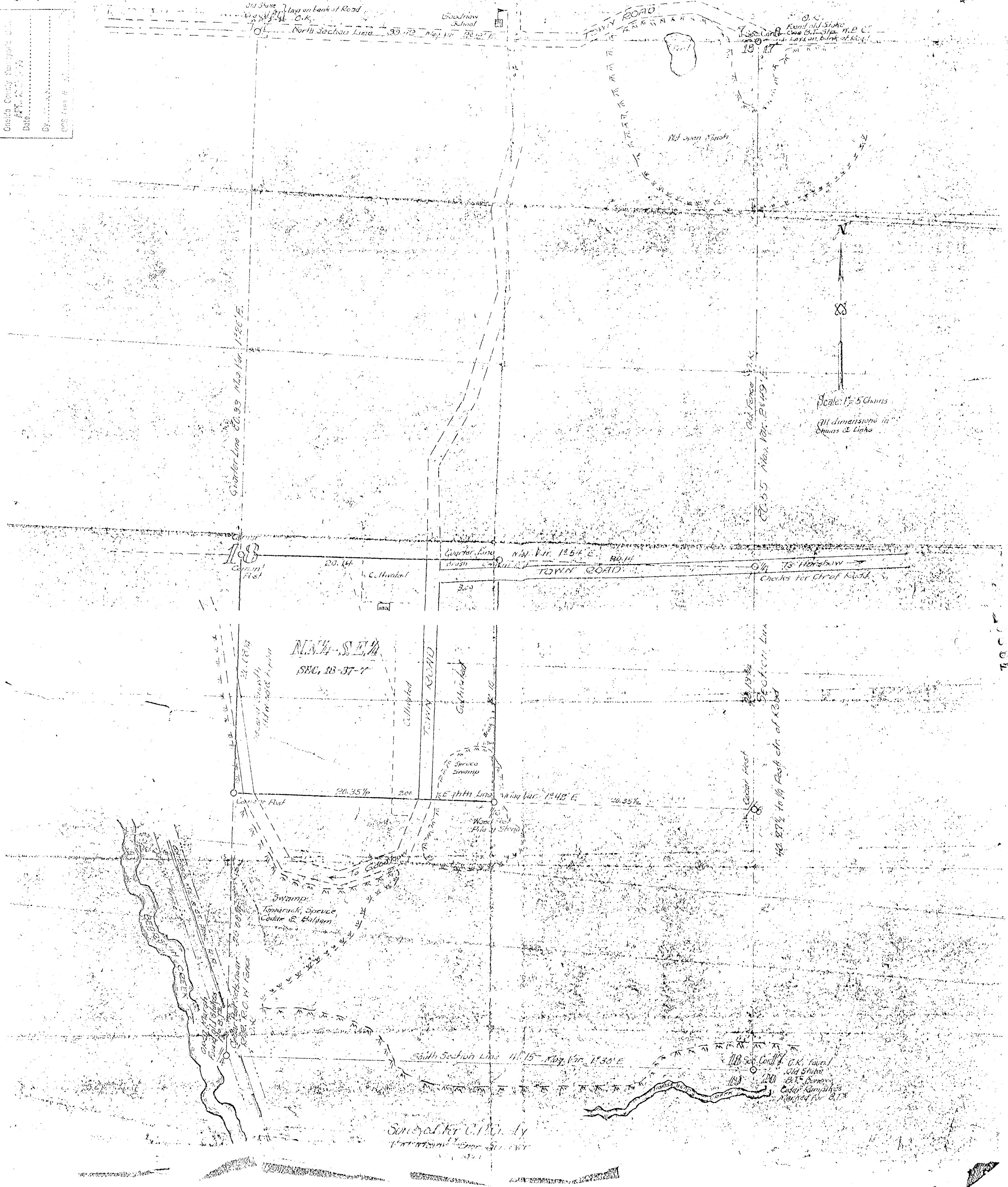


MAP
EAST HALF SEC. 18-37-7

See Bill Rhode @ DNR
Trout LAKE about the
Departments File on the
S¹/₄ of 18-37-7

MJR
4-22-88

RECEIVED & FILED
Greene County Surveyors Office
DATE 4-22-88
BY [Signature]
CDS Print # [Blank]



General for C.P. Co. by
[Signature]

1/8 Sec. 18-37-7
C.R. Rural
Old Stone
B.T. Co. 1870
Color Campsites
Marked for B.T.