

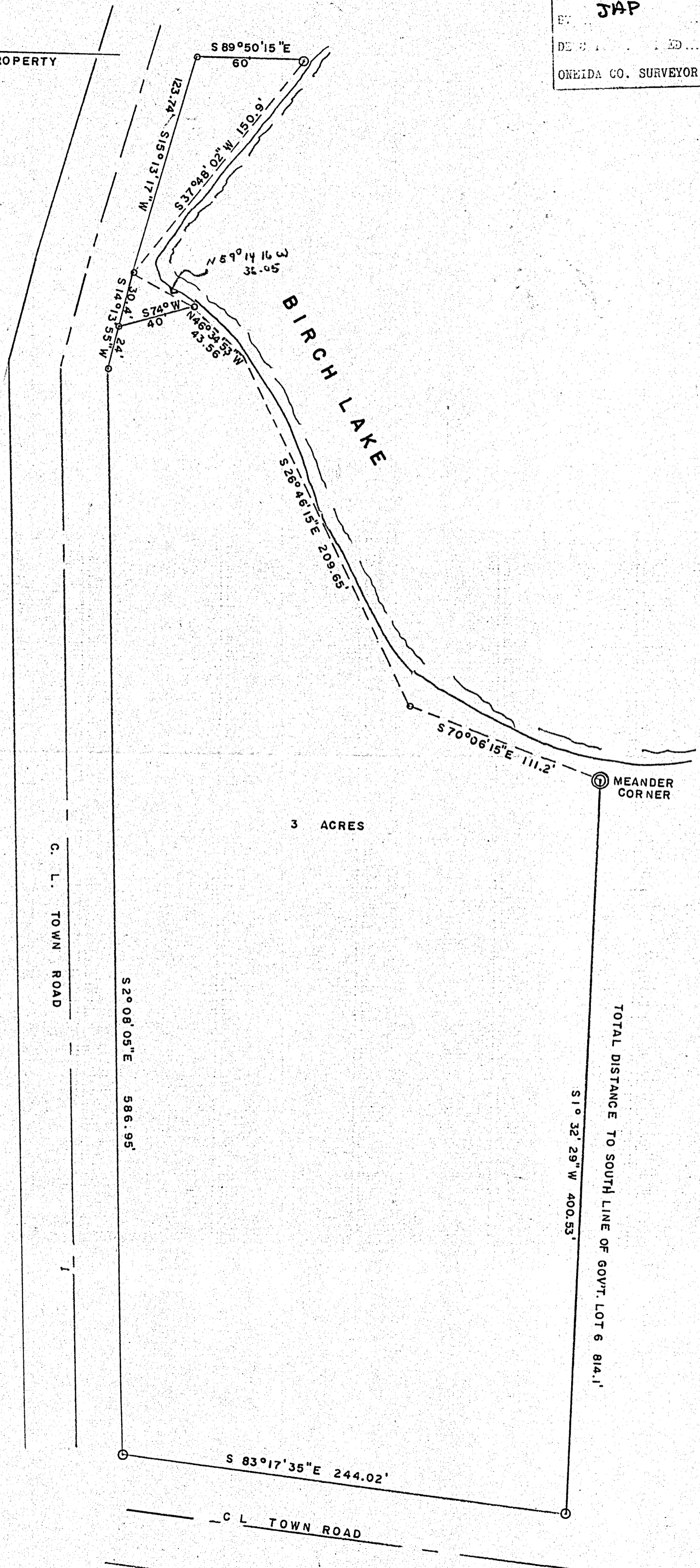
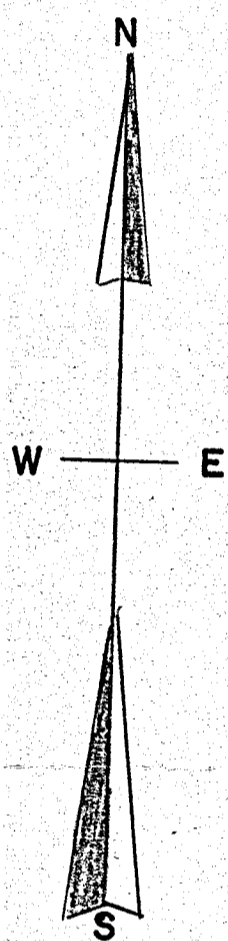
A3815

A3815

PART OF GOV'T. LOT 6, SECTION 6, T 37 N, R 7 E
ONEIDA COUNTY, WIS.

MAP # A3815 ✓
 DATE FILED 8-6-2021
 BY JAP
 DEPT. OF LAND
 ONEIDA CO. SURVEYOR'S OFFICE

SOUTH LINE D. JUNG PROPERTY



BEARINGS MAG. NORTH
 SCALE 1" = 50'
 IRON PIPE
 5-21-1971
 N. LOFTUS



NO. 71 A

A3815

A3815