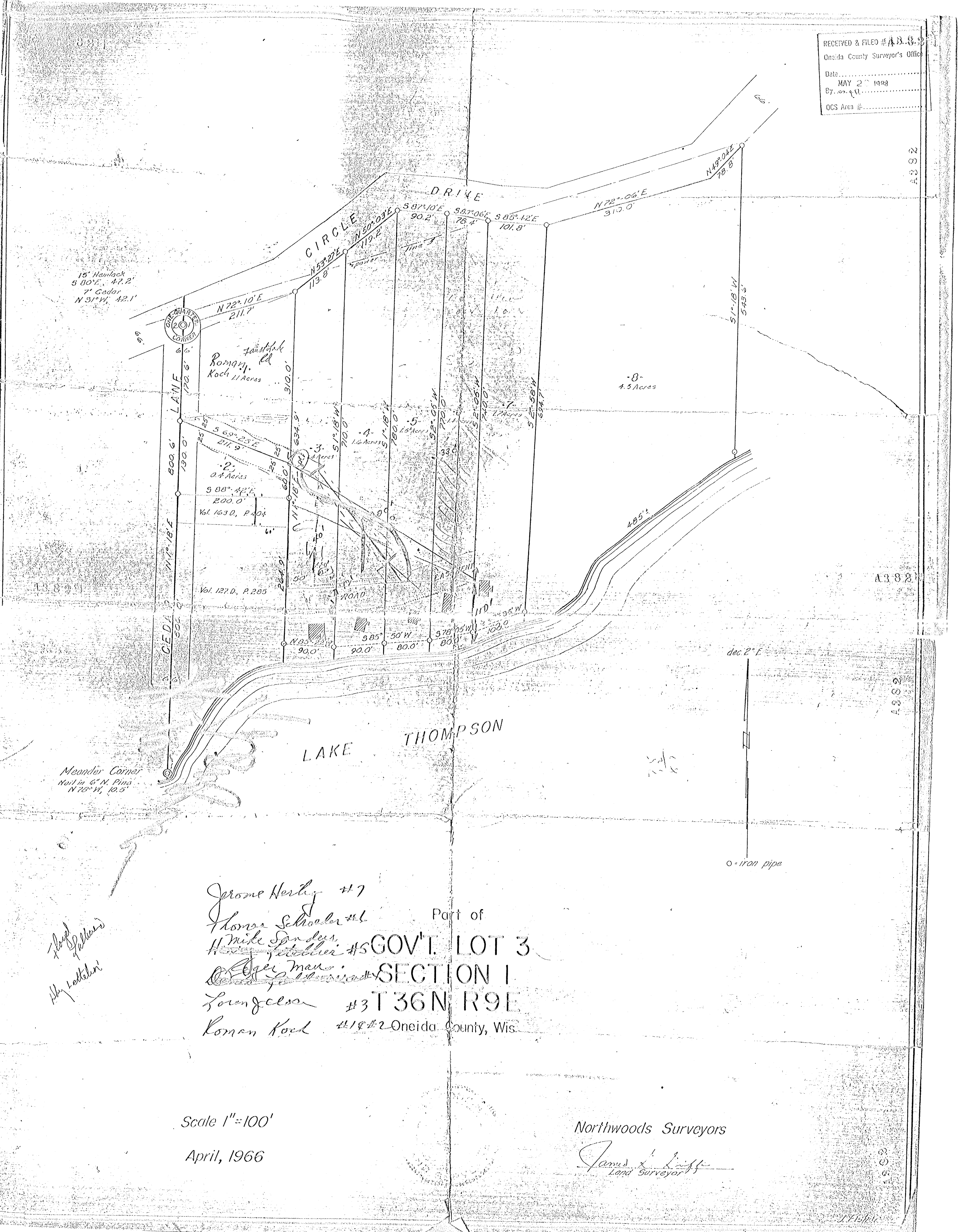


RECEIVED & FILED # A 33.8.92  
 Oneida County Surveyor's Office  
 Date: MAY 27 1998  
 By: [Signature]  
 OCS Area #

A 33.8.2

A 33.8.2

A 33.8.2



15' Hemlock  
 5 00' E, 47.2'  
 7' Cedar  
 N 31° W, 42.1'

fauststark  
 Roman Koch  
 11 Acres

2  
 0.4 Acres  
 S 88° 42' E  
 200.0'  
 Vol. 163 D, P. 404

Vol. 127 D, P. 205

Meander Corner  
 Nail in 6" N. Pine  
 N 75° 14', 10.5'

*Flood Gallows*  
*My Letterbox*

Jerome Herby #7  
 Thomas Schroeder #6  
 H. Mike Sanders  
 H. Mike Sanders #5  
 Oger man  
 Loren Glass #3  
 Roman Koch #1 & #2

Part of  
**GOV'T. LOT 3**  
**SECTION 1**  
**T 36 N R 9 E**  
 Oneida County, Wis.

Scale 1"=100'  
 April, 1966

Northwoods Surveyors  
 James A. Linff  
 Land Surveyor

J. Fisher