

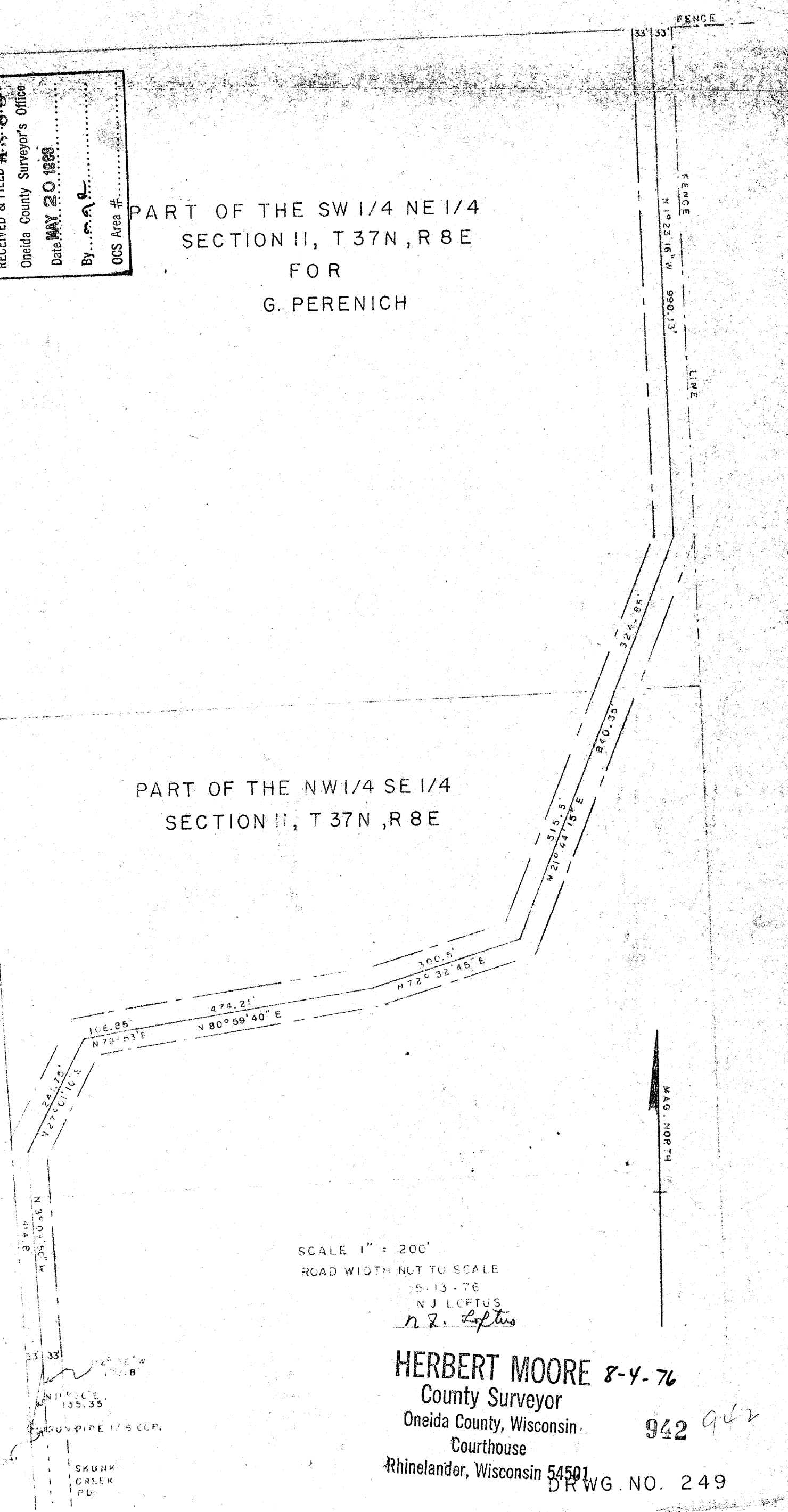
4883V

4883V

RECEIVED & FILED A. 3. 83  
 Oneida County Surveyor's Office  
 Date MAY 20 1988  
 By *[Signature]*  
 OCS Area #

PART OF THE SW 1/4 NE 1/4  
 SECTION II, T 37N, R 8E  
 FOR  
 G. PERENICH

PART OF THE NW 1/4 SE 1/4  
 SECTION II, T 37N, R 8E



SCALE 1" = 200'  
 ROAD WIDTH NOT TO SCALE

5-13-76  
 N.J. LOFTUS  
*n.j. Loftus*

HERBERT MOORE 8-4-76  
 County Surveyor

Oneida County, Wisconsin  
 Courthouse

Rhineland, Wisconsin 54501

942 *942*

DRWG. NO. 249

A383H

IRON PIPE 1/16 COP.  
 SKUNK CREEK  
 PU